

# Chapter 2

## PUNTA CANA

### DOMINICAN REPUBLIC

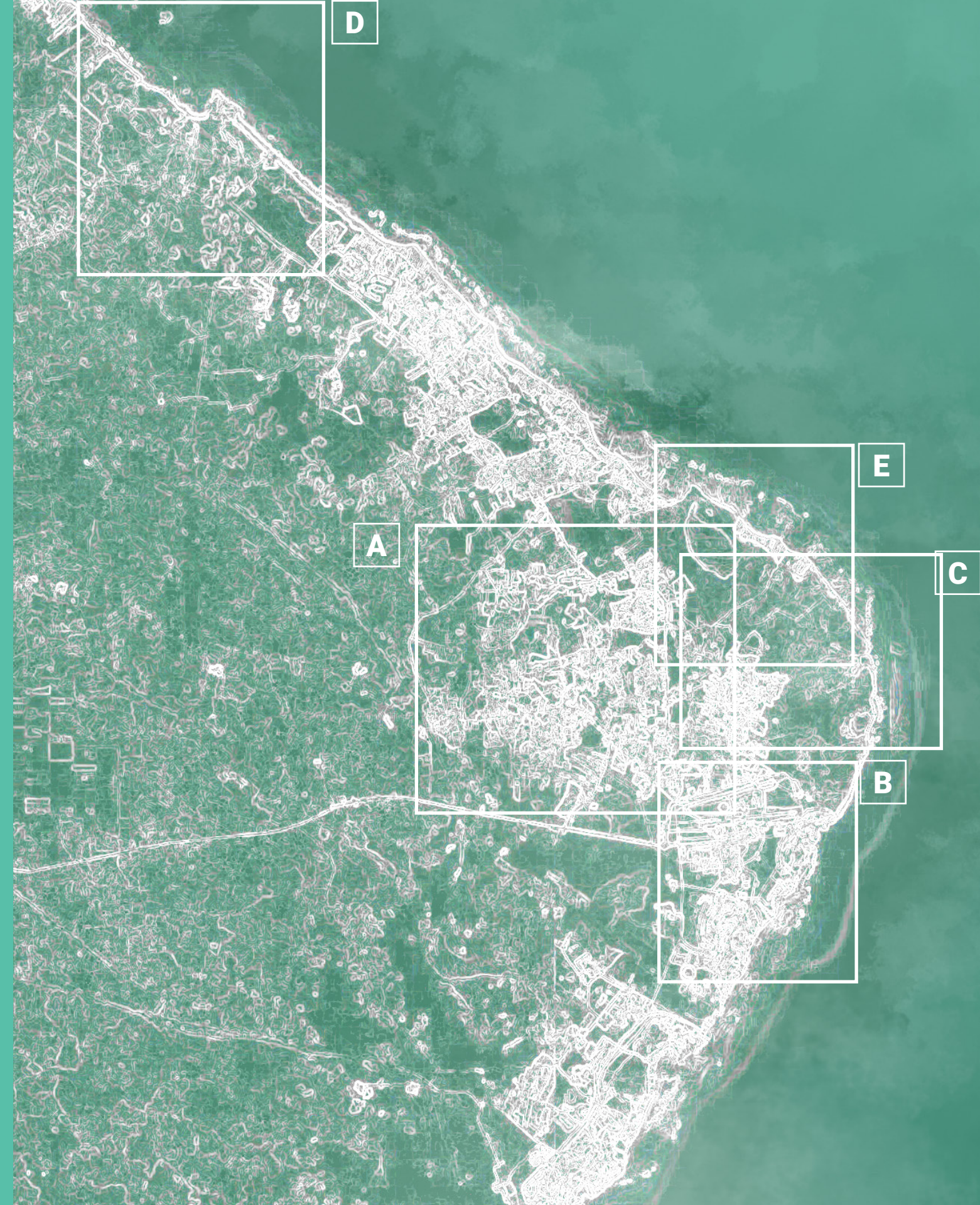
The Dominican Republic is among the most developed countries in the Caribbean. It has diversified its economy beyond agriculture and mining into tourism, services, and the industrial sectors. Booming international tourism is currently the main driver of the country's economy. By seeking to capitalize on its natural beauty and resources, the Dominican Republic is creating severe fragmentation and sprawl along its coast. The popularization of "sol y playa" (sun and beach) tourism across the island is resulting in the marginalization of local communities and growing income and infrastructural inequities. Rapid growth is also creating unsustainable mining of its aquifers for freshwater, sea pollution by waste and sewage dumping, and the exacerbation of environmental degradation and loss of coral reefs and mangroves along the coasts.

The concentration of capital and jobs in urban centers like Santo Domingo and Santiago and tourist-focused destinations such as Punta Cana have created significant population movement across the country. The result is intense pressure for infrastructure investments needed to support these shifts, including housing, schools, public transportation, health services, and the like.

All the above issues are evident in the region of Verón-Punta Cana. The Puntacana Resort & Club was started as a luxury tourist destination by Grupo Puntacana, a private developer, with no local government controls. Grupo Puntacana also created a privately-owned and operated international airport on its property. The airport catalyzed the development of the all-inclusive resorts that now hug the coast from Playa Macao to Cap Cana. These developments have privatized large swaths of the public coast and pristine water holes, which now are only accessible to paying guests.

Beyond the all-inclusive hotels along the coast, the inland area is a mismatch of housing for the working population, with short-stay apartment developments, industries, and other services mainly focused on sustaining tourism activity along the coast. There is no formal long-term plan to articulate a vision for the area. These factors create a haphazard and fragmented landscape of nature and gated developments, with virtually nonexistent services for the working population.

The Urban Design Studio sought to engage with the following questions: How can a tourism-oriented enclave pattern evolve and diversify its economy to support the needs of a growing population? Which strategies could support a move towards an inclusive and sustainable long-term vision for Punta Cana that values environmental sustainability, social equity, biodiversity, and connectivity?



# PARTNERS

## PARTNER ORGANIZATIONS

**Government Partner:**  
Ministerio de Turismo  
República Dominicana



**Private partner:**  
Grupo Puntacana



**Academic Partner:**  
UNPHU- Universidad  
Nacional Pedro Henríquez  
Ureña



## IMPLEMENTATION PARTNERS

Arq. Gustavo Valdez  
Jake Kheel  
José Franco  
Juan Carlos Sánchez  
Laura Patricia Salvador  
Luis Migoya  
Arq. Michelle Valdez  
Coronel Rubén A. Frontal Carran  
Shaney Peña Gómez  
Virna Castillo

Cristóbal Valdez y Asociados  
Fundación Grupo Puntacana  
Local transportation and resident  
Distrito Municipal Turístico Verón-Punta Cana  
Asociación Nacional de Hoteles y Turismo  
Grupo Puntacana  
Cristóbal Valdez y Asociados  
Defensa Civil y Sistema Integrado Nacional de Información  
Ministerio de Turismo  
Ministerio de Turismo

## ACADEMIC PARTNERS

Heidi De Moya  
Miguel Fiallo Calderón  
Mizoocky Mota  
Omar Rancier

Director, School of Architecture - UNPHU  
Provost, Universidad Nacional Pedro Henríquez Ureña  
Professor, Diseño 7- UNPHU  
Dean, School of Architecture and the Arts- UNPHU

## STUDENTS, Universidad Nacional Pedro Henríquez Ureña

Alanis Tejada Gautreaux  
Ann Marie Hernandez Rodriguez  
Bianlly Yelissa Méndez Reyes  
Maria Paula Cruz Rodriguez  
Maria Victoria Rodriguez Estevez  
Rebeka Martínez Jiménez  
Venus Arizaira Torres Piña

Universidad Nacional Pedro Henríquez Ureña



FISHING PIER

VISITING A FISHING VILLAGE AT PLAYA CABEZA DE TORO



WALKING THE WATER TRAIL AT LAGUNA PAVARO



DYING MANGROVES AT PLAYA MACAO



ENJOYING THE LAGOONS OF RESERVA ECOLÓGICA OJOS INDÍGENAS

PRICE OF ADMISSION: \$90

SWIMMING IN THE CENOTE



# VERÓN-PUNTA CANA WORKSHOP

On March 6, 2024, the local government hosted us at the Palacio Municipal in Verón-Punta Cana for an all-day workshop. We were welcomed by the mayor and other local officials who were eager to engage with the students in conversation about the long-term future development of the area. Earlier in the week, Architect Gustavo Valdez presented a strategic framework for Punta Cana that had been developed more than a decade ago. Gustavo's plan and observations made by the students during the week of visiting locations around Punta Cana and Verón formed the basis for our conversation. Shaney Peña-Gómez and Virna Castillo from the Ministerio de Turismo de la República Dominicana participated in the discussion with an ear toward developing an updated strategic framework responding to current conditions.

**Taller de Diseño Urbano de Punta Cana**  
**Universidad de Columbia y UNPHU**

Jueves 7 de marzo, 9:30am a 1pm  
 Sala Capitular, Junta del Distrito Municipal  
 Verón- Punta Cana

Te invitamos a compartir tus ideas y conocimientos del lugar para ayudarnos a visualizar el futuro de Verón-Punta Cana. Estaremos viendo aspectos relacionados con los procesos de urbanización, cambio climático, y resiliencia que apuesten a un futuro próspero para todos.

COLUMBIA  
**GSAPP**  
 URBAN DESIGN  
**UNPHU**

## WORKSHOP THEMES

### Regenerate Ecosystems

How can tourism investment heal damaged ecosystems, respect unique natural features, and put ecology first?

### Connections

How can all people of Verón-Punta Cana be better connected to nature, amenities, and economic opportunities? How can tourists and other visitors be better connected to local culture?

### Efficiency of Infrastructure

How can the systems that sustain urban development be planned for long-term growth in the face of climate change?

### Conscious Use and Development

How can every appropriation of natural resources be consciously considered for the benefit of the whole community and its underlying ecosystems?

### Living Regulations (Capacity Building)

How can the development of long-term plans and urban design visions and policies simultaneously build the community's capacity for implementation?

### Coastal Access

How can the coastline be accessible to all people?

### Community Unity

How can the design of shared public spaces build social capital?

### Concentration / Density

How can development proceed to enable efficient infrastructure, connections, public transport, and walkability?



# FRAMEWORK FOR PUNTA CANA



**BLURRING THE MONEY EDGE**  
PLAYA MACAO



GEOLOGICAL RIDGE LINE



**STITCHING**  
VERON



**GENERATING COLLECTIVE CORRIDORS**  
PUNTACANA VILLAGE

PUNTA CANA AIRPORT

**PROTECTING AND REVIVING**  
LAGUNA BAVARO



**MENDING LANDSCAPES**  
PLAYA BONITA



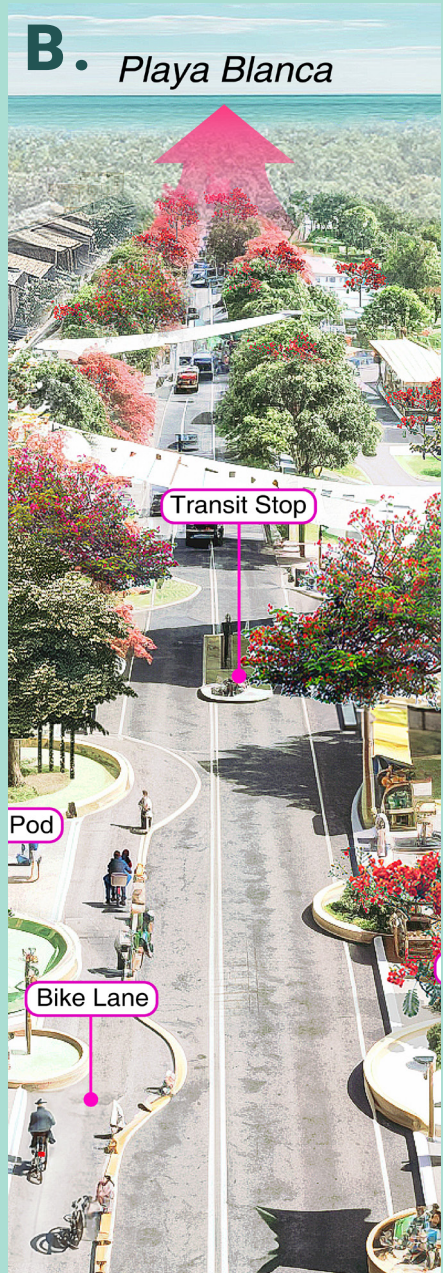
## PRINCIPLES

1. RESTORE COASTAL ECOLOGY
2. USE LAND AND RESOURCES CONSCIOUSLY
3. STITCH AREAS OF FRAGMENTED DEVELOPMENT
4. ENSURE ACCESS TO THE COAST FOR ALL
5. CREATE INFRASTRUCTURE FOR SOCIAL EQUITY AND COHESIVE CULTURAL IDENTITY

# URBAN DESIGN VISIONS



**VERÓN VERDE**



**RESILIENT COLLECTIVE CORRIDORS**



**MENDING LANDSCAPES FROM MINE TO COAST**



**WATER AS CATALYST**



**BRIDGING THE BLUES**



# A. VERÓN VERDE

## Stitching A New Fabric

*Creating socio-ecological capital by preserving ecological resources, implementing social infrastructure, and enhancing urban conditions and connectivity.*

**TEAM: FLORENTINA ANASTASIA, CANDELARIA GASSIEBYALE, SALONEE GHOSH, JESSY ROJAS**

Understanding Verón as a dormitory town, the hidden backbone of Punta Cana's tourism economy, this proposal aims to transform Verón into an attractive and lively Caribbean city full of energy, activity, and life. Three main urban strategies will drive this change: The creation of ecological corridors that include social infrastructure, the preservation of habitats by accessible ecological corridors, the consolidation of an efficient mobility network that promotes pedestrian use, and the diversification of its uses, locating potential areas for sustainable urban expansion and enhancing the sense of community.

Leading the transformation is "Verón Verde," a proposed alliance that protects, enhances, and promotes green and social infrastructure, uniting public and private actors under a common interest.

With this, the project envisions the future of Verón as a resilient, vibrant, and connected city, an ecological asset for the region, and a living legacy for future generations.



D

STITCH AREAS OF FRAGMENTED DEVELOPMENT

A

E

C

B

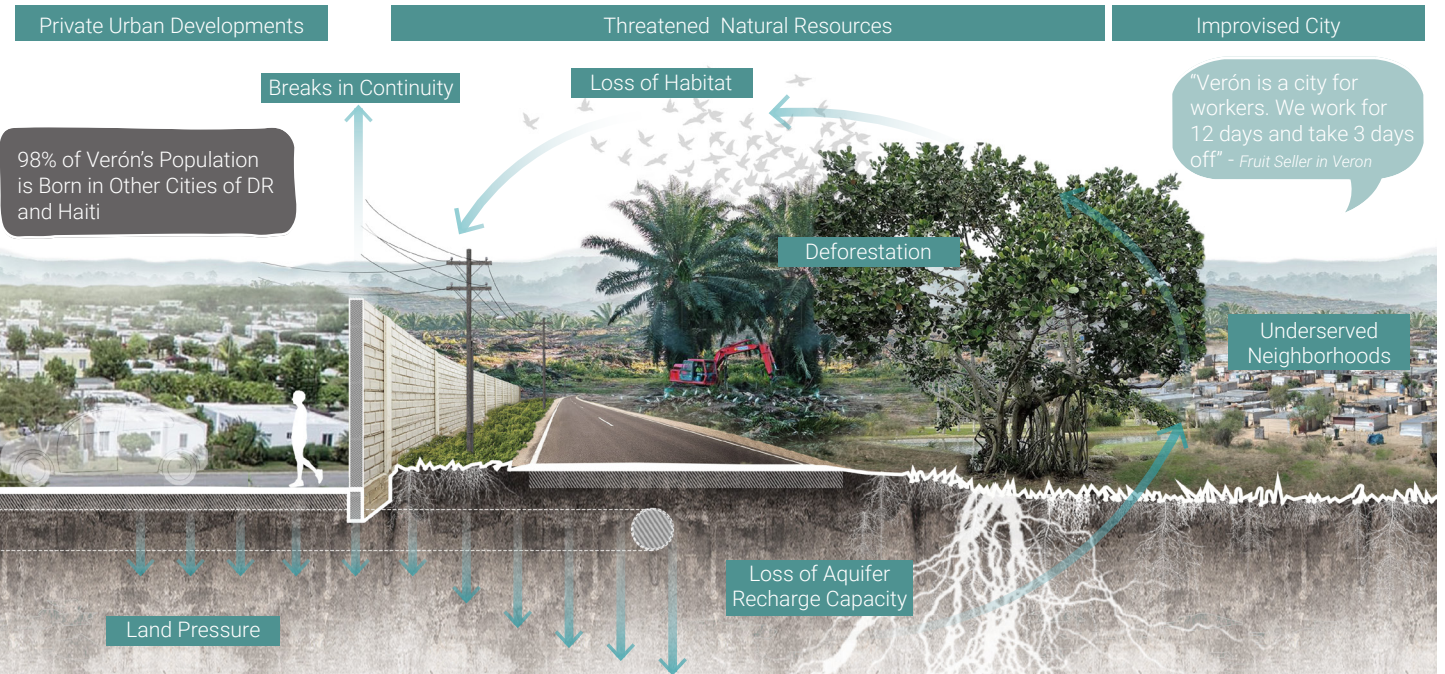
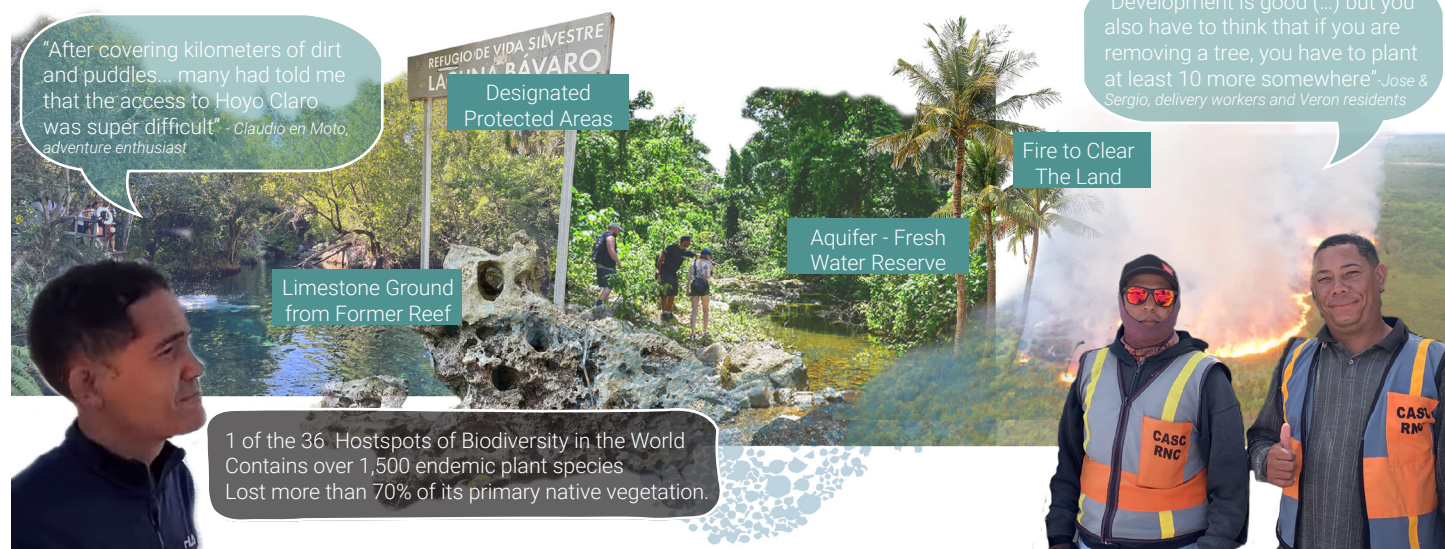
# INEQUITY OF OPPORTUNITIES



# LIMITED STREET LIFE



# THREATENED ECOLOGICAL HERITAGE

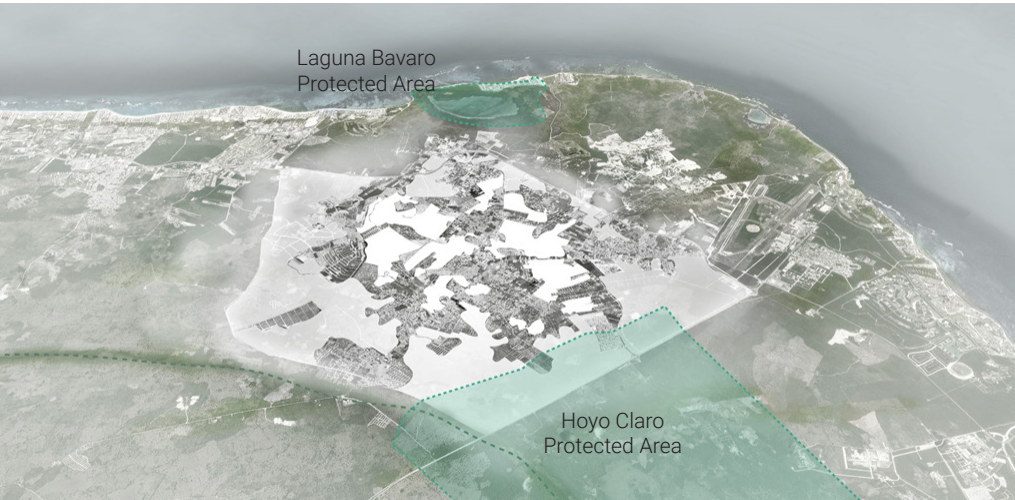


As a result of disconnected actors, Punta Cana has evolved as a highly fragmented cluster of enclaves.



# FRAGMENTS WITHIN FRAGMENTS

Verón is neglected amidst waterfront resort development, and its unplanned growth strains the city socially and spatially. Socio-economic disparities create tensions between private developments and improvised neighborhoods, fostering inequity, disconnection, and unregulated urban sprawl, creating pressure on the land and threatening the ecology.



# AREAS OF OPPORTUNITY

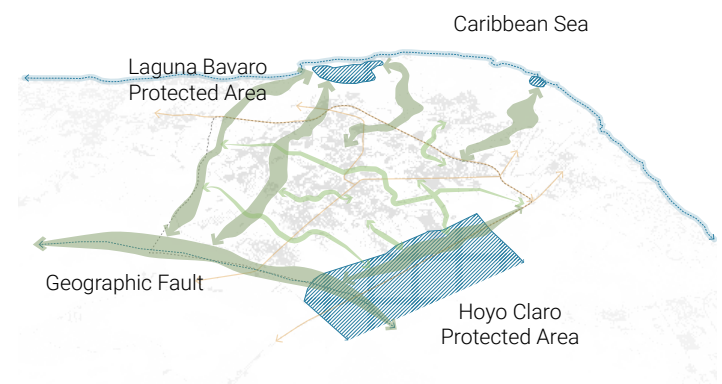
Despite the sprawl's apparent chaos, there are areas of untapped potential. The undeveloped spaces between parcels, often overlooked as mere 'leftovers,' are opportunities to bridge ecological and social division, both above and below ground, in Verón and beyond.

VERÓN VERDE ALLIANCE

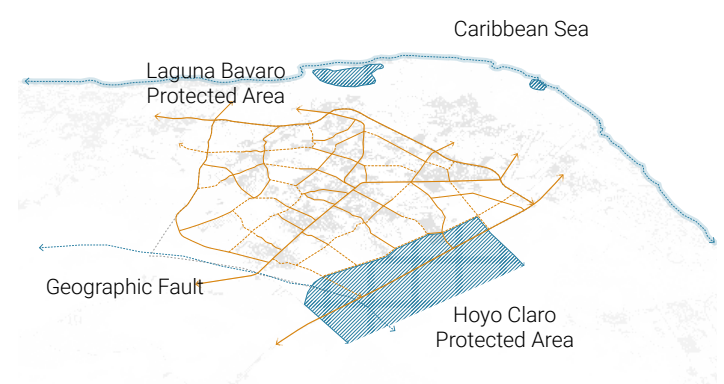


Verón Verde is proposed to unite groups currently operating independently into a single entity. It is a partnership between public and private actors, including the Municipality of Verón, private developers, hotel operators, and residents. It is envisioned as an alliance dedicated to protecting, enhancing, and promoting green and social infrastructure to improve the quality of life for the people of Verón.

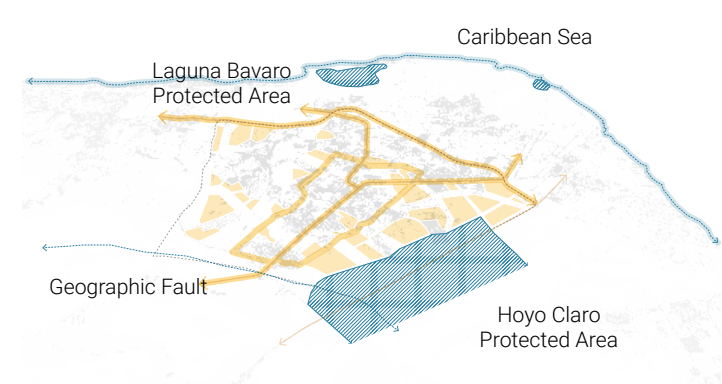
VERÓN'S FRAMEWORK



The proposed framework defines continuous green areas as green linkages, which serve as the primary sites to enhance cohesion throughout Verón. This involves protecting and reinforcing the green areas' potential as ecological corridors to leverage ecosystem services and improve the facilities and social infrastructure within them.



A mobility infrastructure network is defined by utilizing the approach of green networks. This involves completing and connecting existing roads to organize the current urban fabric, developing a diverse infrastructure for movement, and incorporating nature trails for walking, bike lanes, and public bus services.



The framework also includes enhancing community growth by strategically locating mixed-use developments and densification in key areas of Verón. Additionally, areas are identified and reserved for future sustainable urban expansion.



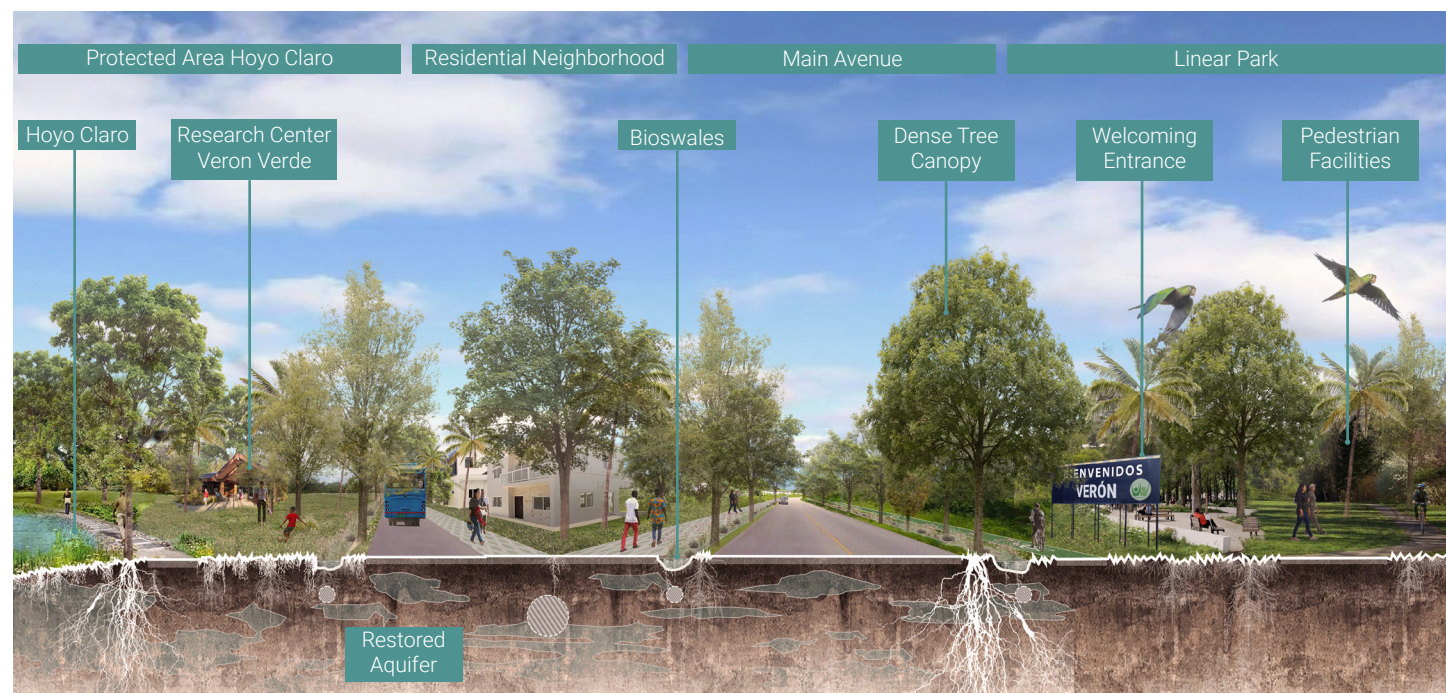
**VERÓN - PUNTA CANA**  
BREAKING BARRIERS TO CONNECT PEOPLE AND ECOSYSTEMS



01. STITCHING NEIGHBORHOODS



03. CENTRO VERÓN



02. ECOLOGICAL ACCESS TO THE CITY



04. GREEN CORRIDOR



# VERÓN - PUNTA CANA 2100

A RESILIENT, VIBRANT AND CONNECTED CITY AN ECOLOGICAL ASSET FOR THE REGION A LIVING LEGACY FOR FUTURE GENERATIONS



Hoyo Claro

Area protegida. Monumento Nacional

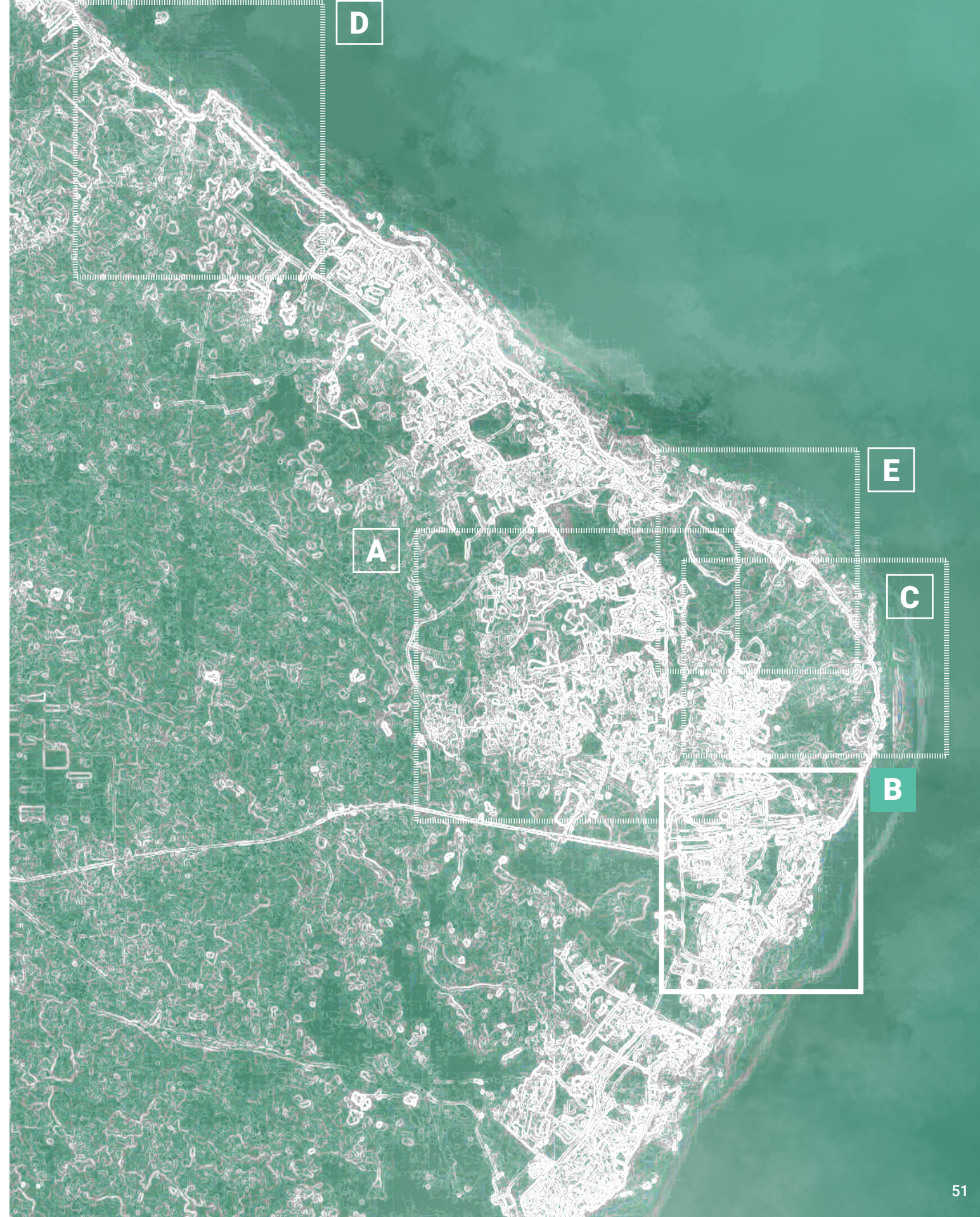


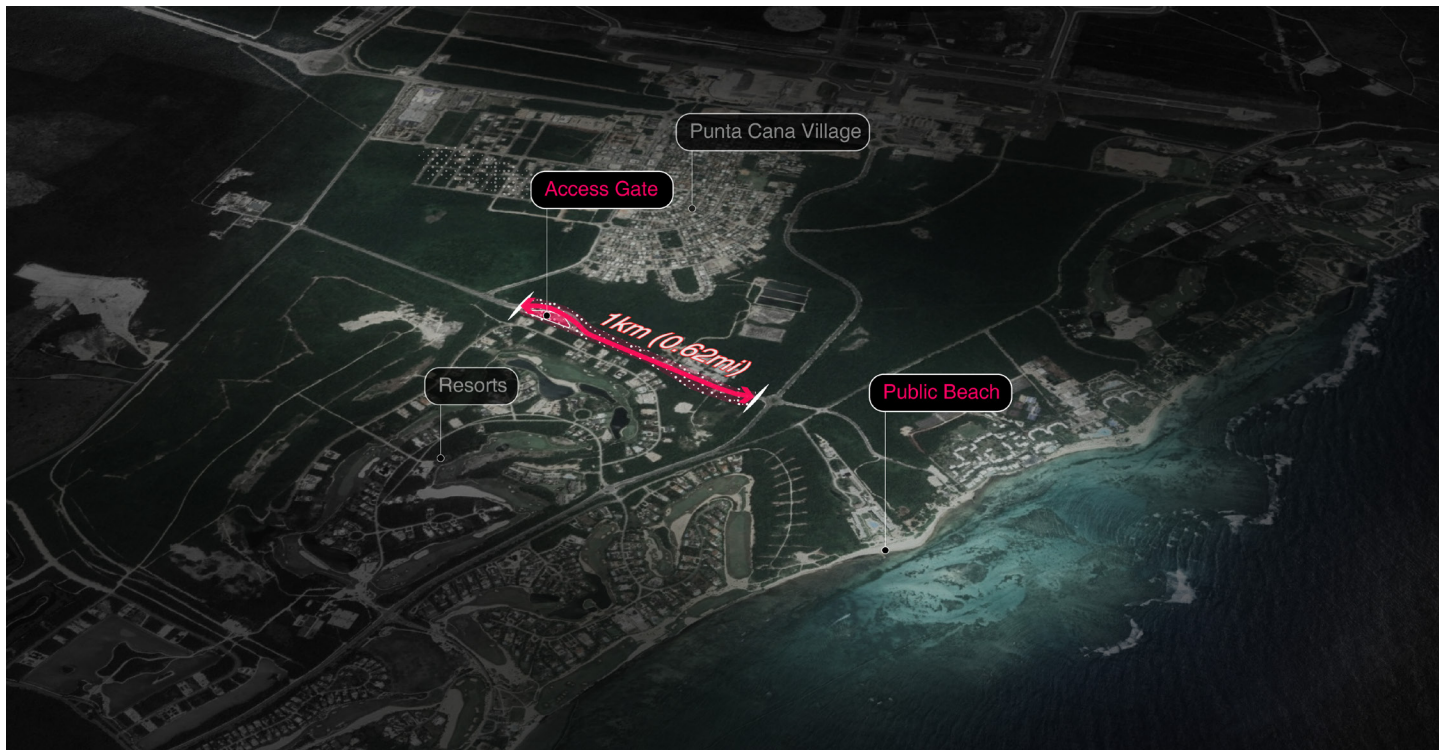
## B. RESILIENT COLLECTIVE CORRIDORS

### Cutting through the privatized waterfront with an access to the public

TEAM: JOANNE CHOU, JISOO KIM, SEUNG HYO CHANG, SUSIE KIM

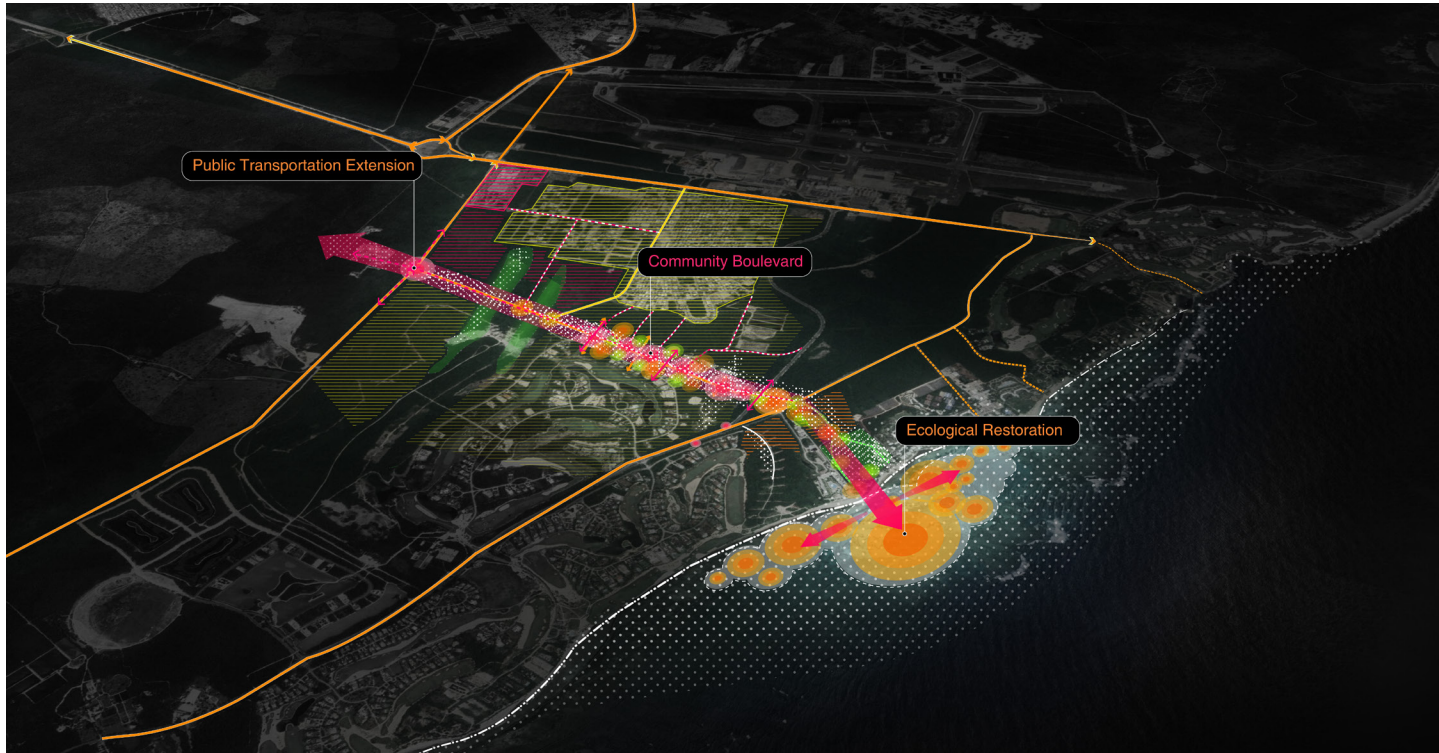
Our vision and urban design framework for Punta Cana village questions how we can develop systems to build resilience and engage existing communities and ecologies with the new. Through a reestablished focus on creating stronger lines of transportation and mobility as a catalyst for change, we explore how we can restore the identity of a Dominican city and create a greater sense of community between tourists and locals alike. Through visiting the site and conducting interviews on the ground, we learned about the lack of connectivity and visibility of labor workers employed by Punta Cana village and began to question what it means to be a real city when the barriers between public and private are ever-present. Additionally, with only one public beach in the area, the strongly controlled coastline is broken up and regulated for access exclusive to resort customers. This provocation sparked questions among us and precipitated discussions regarding the intentions of the Grupo Puntacana developers and the project's actualization.





**LIMITED ACCESS TO THE PUBLIC BEACH**

Private road with limited public access as our initial intervention. By opening the access gate and transforming the private road into a public street, this intervention acts as a catalyst for beach access and brings the community together.

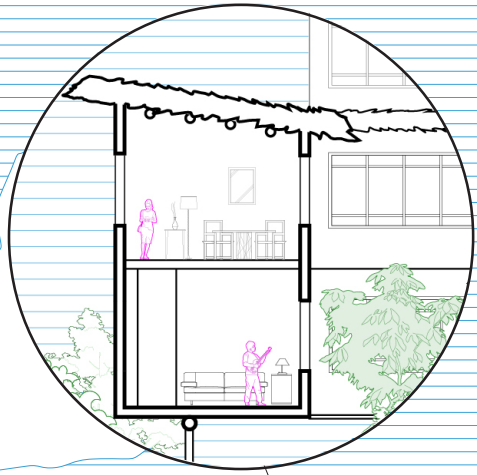


**THE FIRST INTERVENTION FOR A SUSTAINABLE TOURISM**

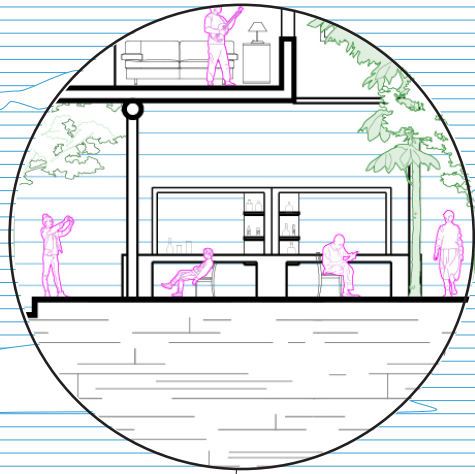
We imagine this strip as a community corridor containing aspects of residential living, transportation pathways, and commercial markets open to everyone and aimed at fostering sustainable tourism.



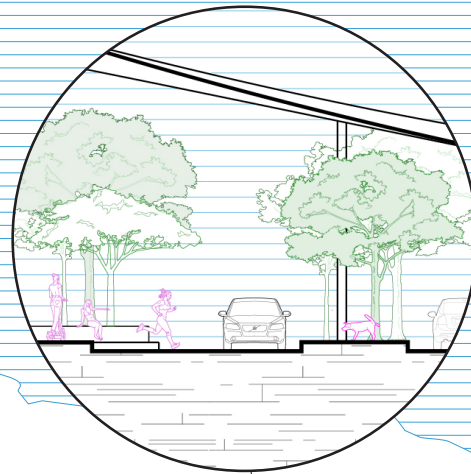
Residential



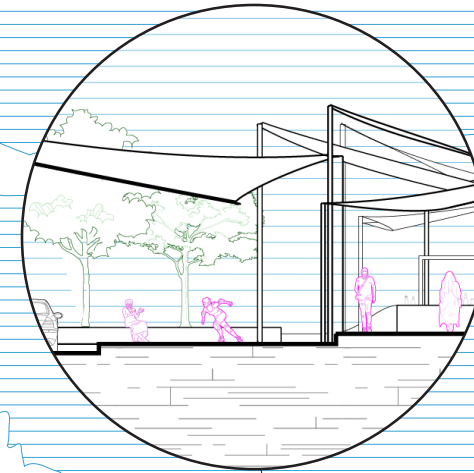
Local Economy



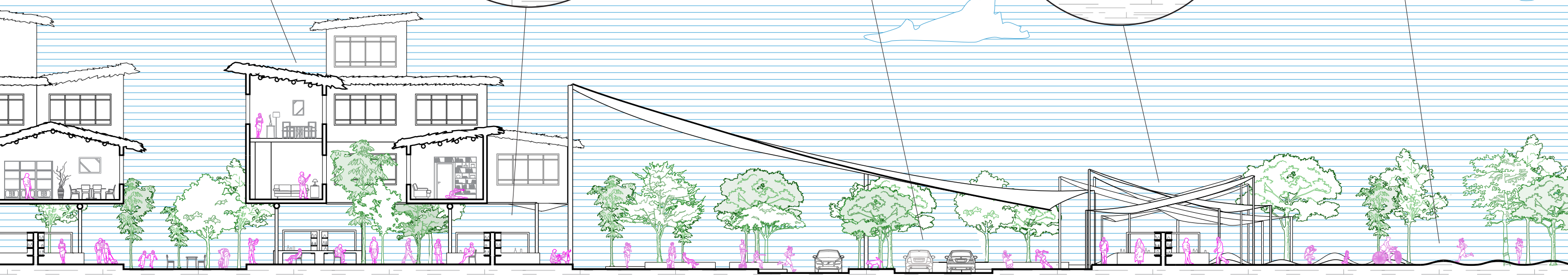
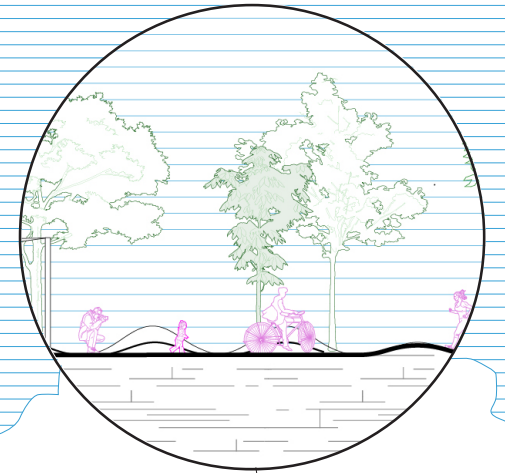
Transportation



Community Streetscape



Ecology



# Anchor Points

## Cultural Infrastructure

## Transportation

## Local Economy

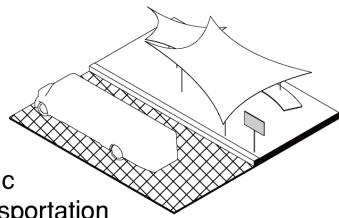
## Residential

## Ecology

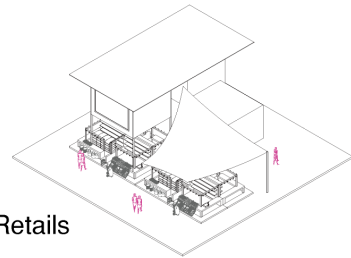
## Community Streetscape



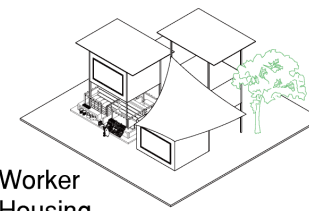
Libraries



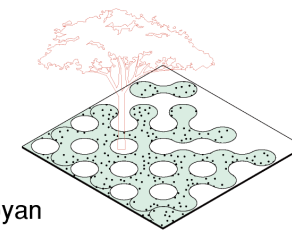
Public Transportation



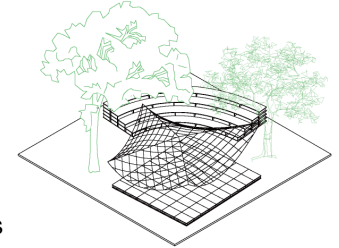
Retails



Worker Housing



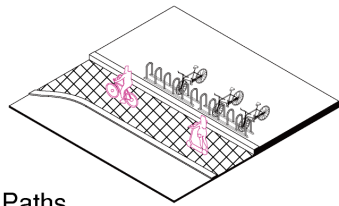
Flamboyan Tree



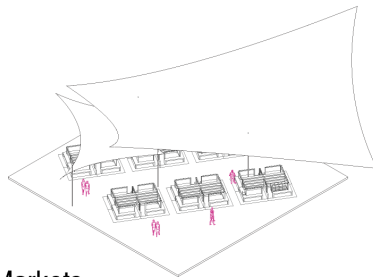
Plazas



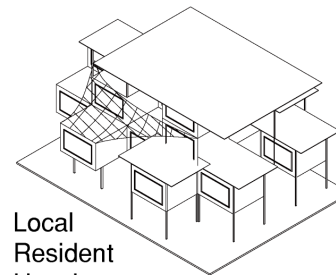
Museums



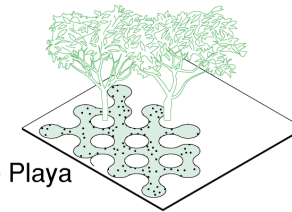
Bike Paths



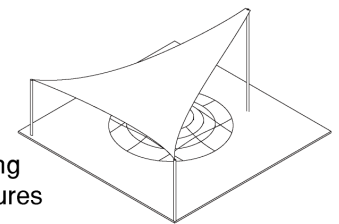
Markets



Local Resident Housing



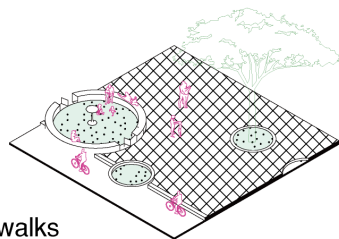
Uva De Playa Tree



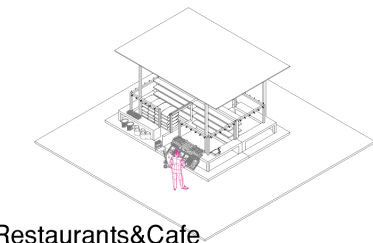
Shading Structures



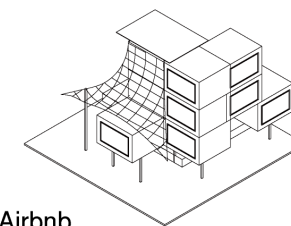
Community Centers



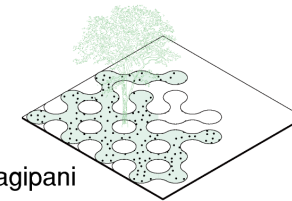
Sidewalks



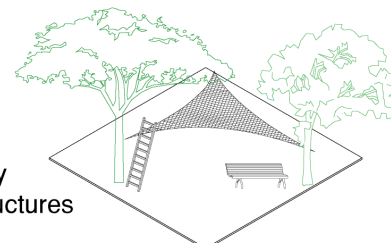
Restaurants&Cafe



Airbnb



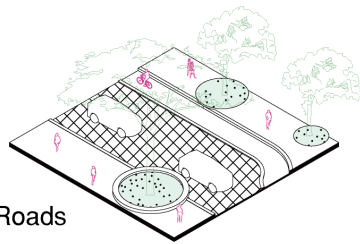
Red Fragipani Tree



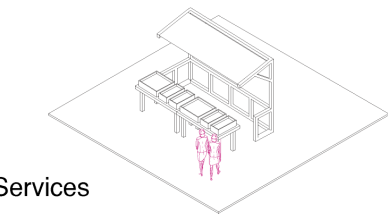
Play Structures



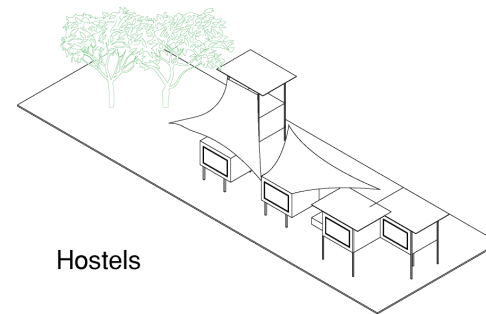
Educational Facilities



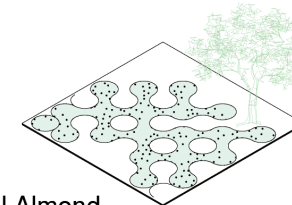
Car Roads



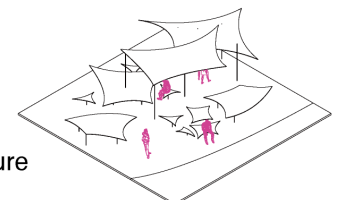
Services



Hostels



Tropical Almond Tree



Street Furniture

Shrubs Grass

Based on the vision of “collective corridors,” we developed categories for each part of our intervention to create an urban design toolkit that can be used for multiplying our intervention across various streets of Punta Cana. The toolkit involves leveraging cultural infrastructure as anchor points to open private gates and create an accessible transportation system for all people and all modes of transportation.

Additionally, we will establish mixed resident communities on top of local retail markets to revitalize the local economy and enhance housing options. The landscape design implemented with the street commons blurs the hard boundaries between luxury resorts or housing and the urban environment and provides an opportunity to engage communities in planting trees and studying local species



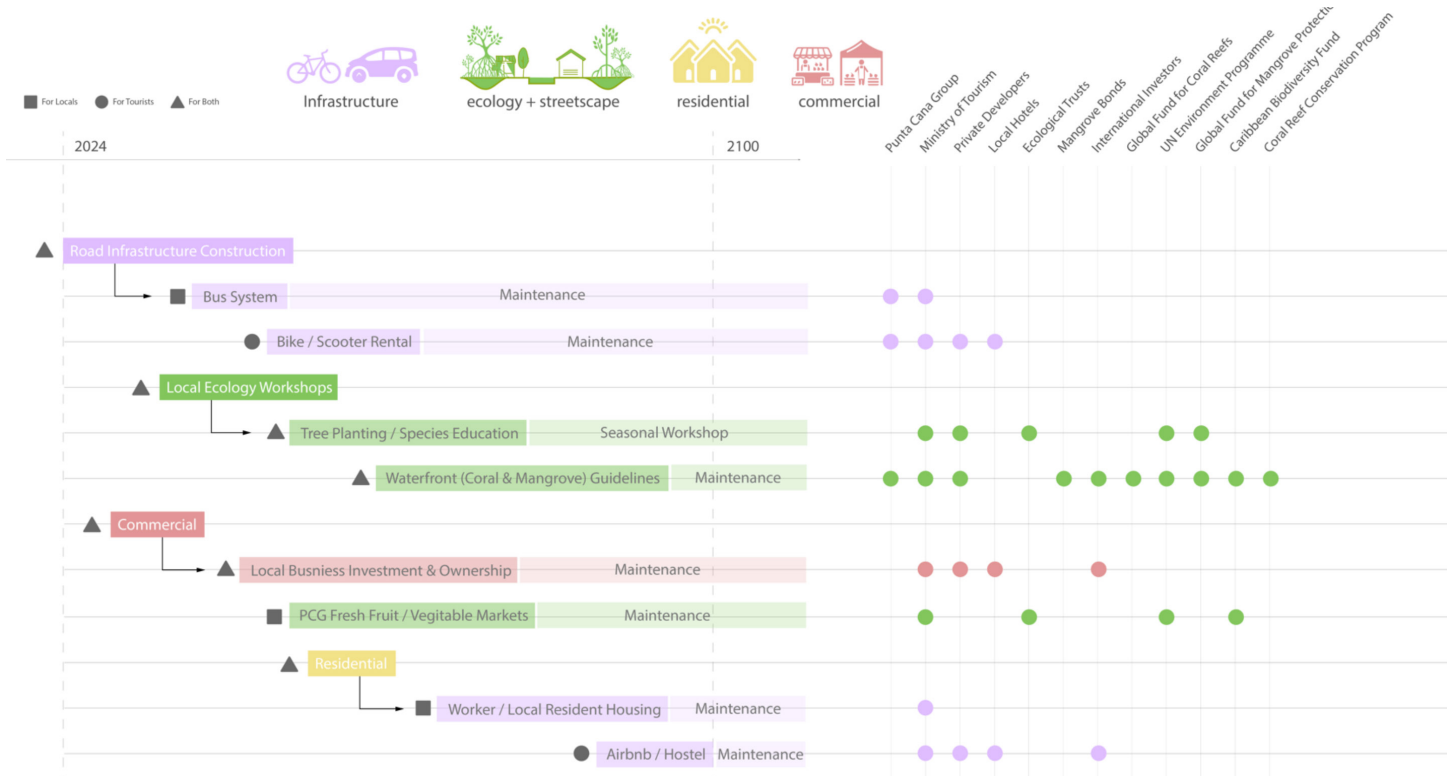
Alongside these main paths, local shops and vendors populate the street, creating a vibrant marketplace. Interspersed throughout, seating and shading structures encourage visitors to use the corridor.



On the right, the lush tree buffer zone ensures privacy for Grupo Puntacana's luxury housing beyond the corridor. The undulating landscape provides a fun, interactive terrain for community gatherings.



Shaded alleyways and local shops on the ground floors invite residents and visitors alike to explore and interact, promoting a sense of community.



This is an idea of our project's development timeline, starting with the pedestrian-friendly Central Axis. It highlights the phased introduction of vital infrastructure improvements and the roles of various stakeholders.

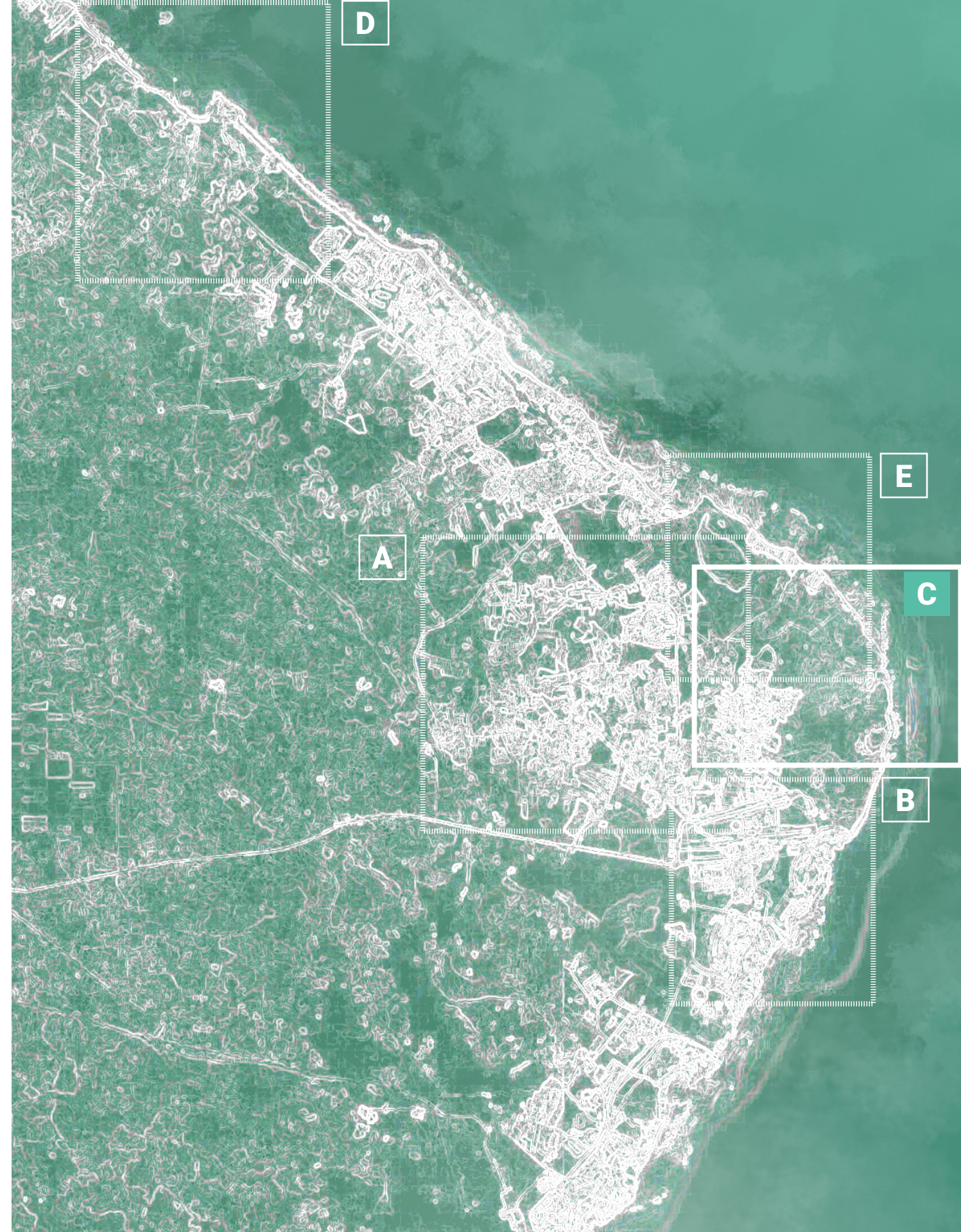


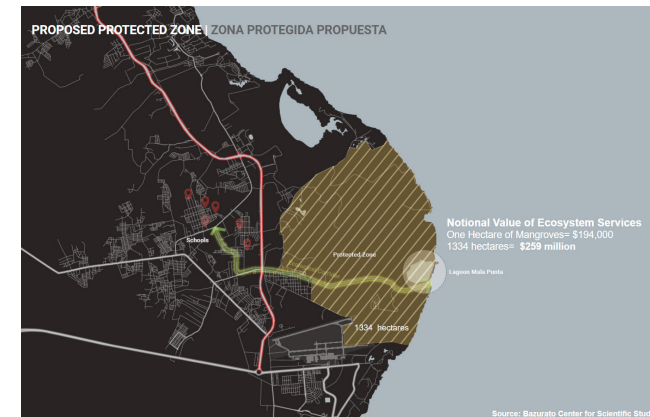
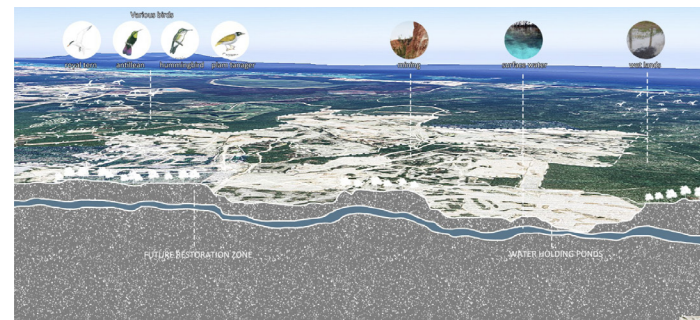
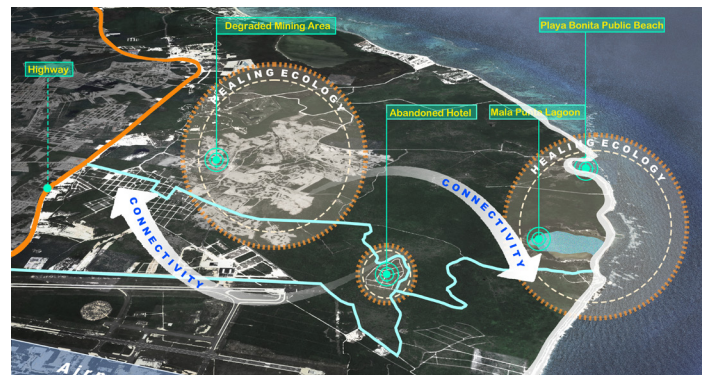
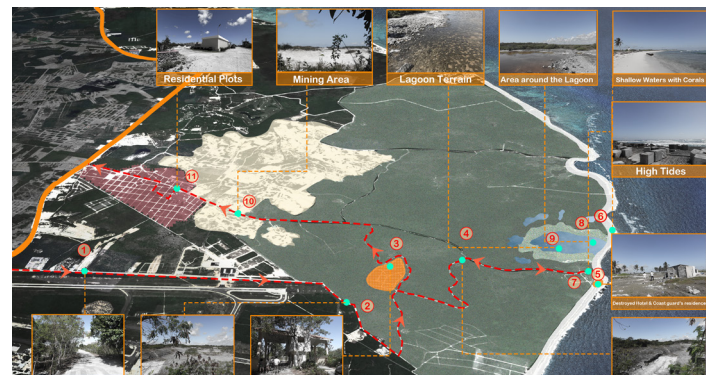
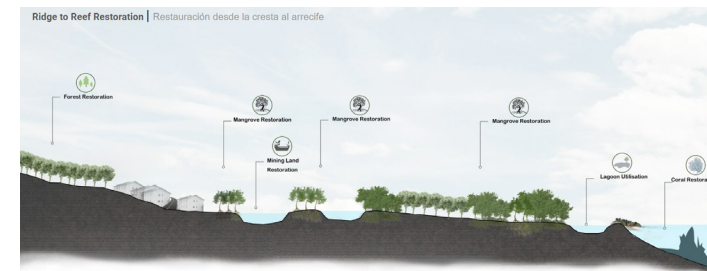
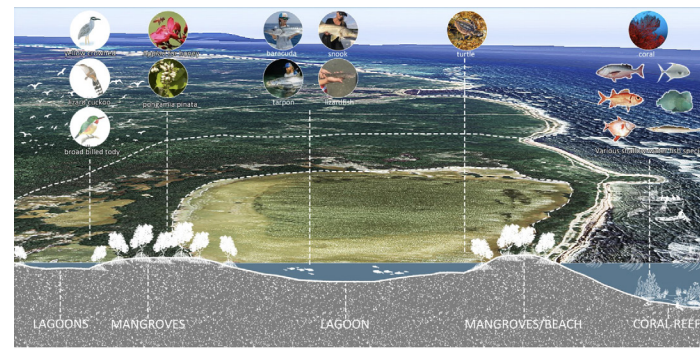
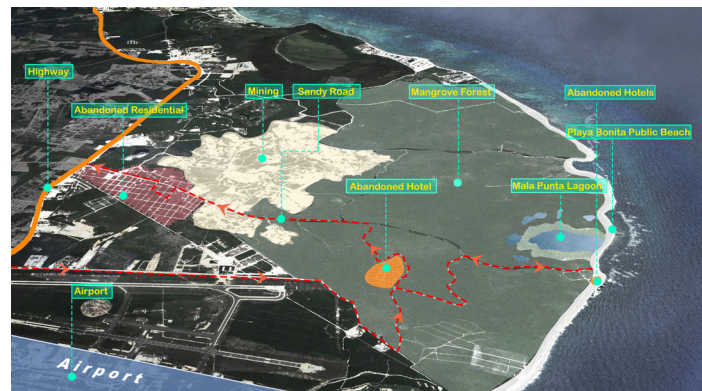
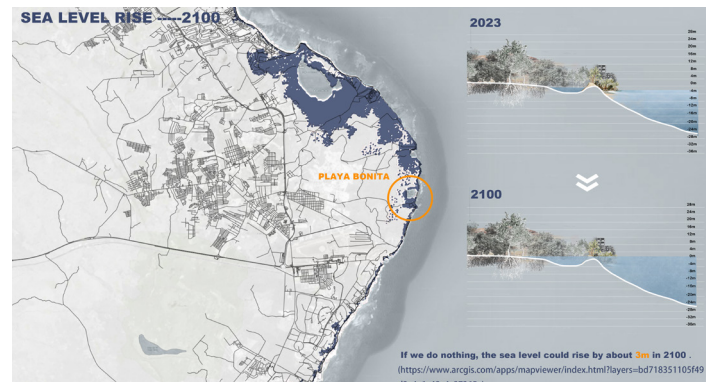
## C. MENDING LANDSCAPES FROM MINE TO COAST

*Climate resilience through landscape restoration and development of sustainable tourism infrastructure*

**TEAM: SAAKSHI SAWANT, SHAOYANG DU, XINYU CAO**

Our project tries to engage people with the ecological value of the place. It advances this vision by making use of the lagoon on our site, Playa Bonita, and making it available for public use, as well as restoring the degraded mining land on our site through mangrove restoration. We envision our site having a coral and mangrove restoration and training center that will help people practice these techniques in other parts of the Dominican Republic prone to climate risks. Our project visualizes a new ecological trail leading to our site, making it more accessible to the rest of the communities. Not many people know about Playa Bonita or the lagoon that exists there. Hence, we want to make our site an ecological edge with light-touch amenities for public use such that it becomes an attraction for local people and tourists. We want to preserve the ecological value of our site, and we imagine its transformation through our project will help deal with climate change toward 2100 and generate revenue from this ecology.





0.1 SITE CONTEXT AND DESIGN APPROACH

The underutilized Lagoon Mala Punta on our site doesn't have good access to the highway. Surrounding this lagoon are rich mangrove forests. Over time, mining has been permitted in this mangrove forest area. After being excavated, the forests are left in a degraded state. Our design intent was to increase connectivity to the lagoon edge and use the abandoned and degraded land parcels on our site for mangrove and coral restoration purposes and for light-touch tourism amenities.

0.2 LAGOON AND MINING AREA POTENTIAL

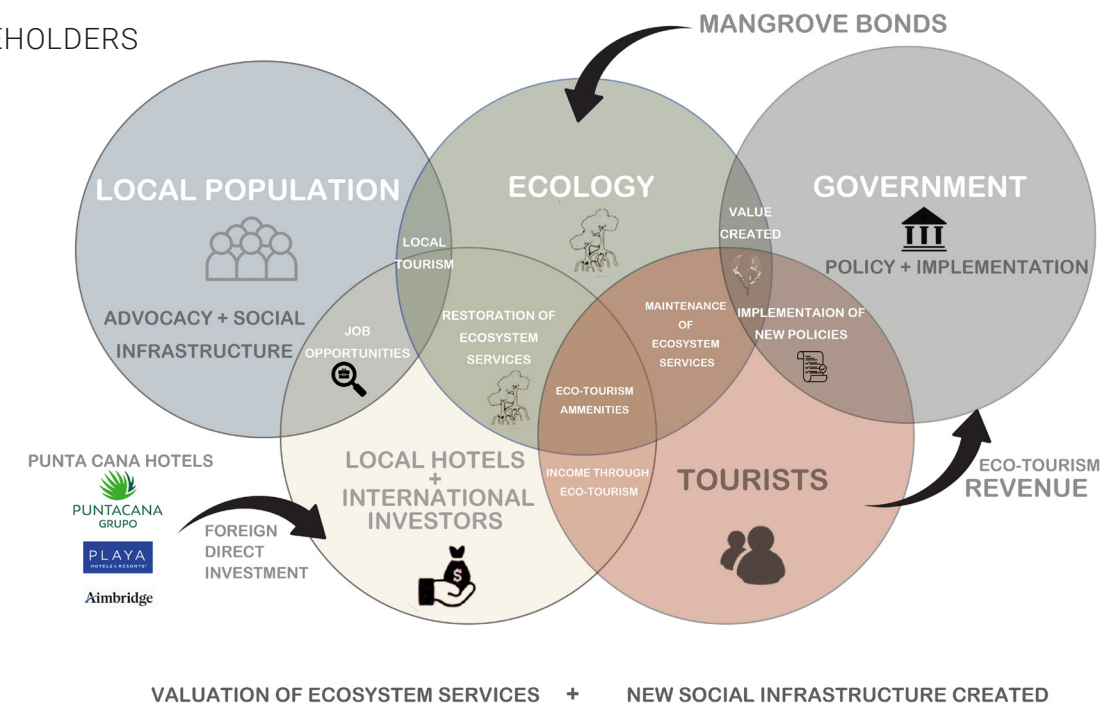
A diversity of birds, mangrove-based apiary, and a wide variety of fish and other aquatic life are found in the lagoon area. Here, we analyze the ecological potential of the lagoon and the mining area.

0.3 RIDGE TO REEF RESTORATION

We propose doing ridge to reef restoration along our site from the upland forest area to the lagoon edge. We propose having our site be a protected zone in the future and connecting it to the surrounding communities.



0.4 STAKEHOLDERS



VALUATION OF ECOSYSTEM SERVICES + NEW SOCIAL INFRASTRUCTURE CREATED



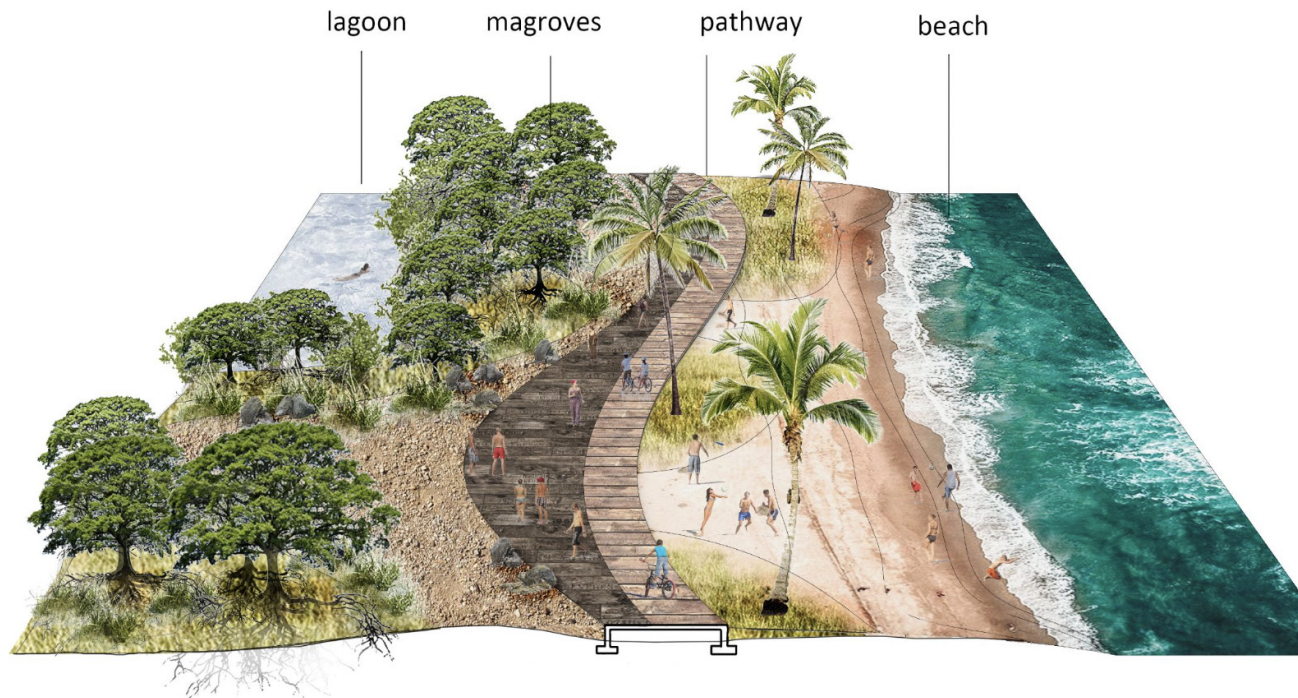
LAGOON AREA VISION

We envision utilizing the area around the lagoon by providing light-touch public amenities.



MINING AREA VISION

We envision restoring the mining area through mangrove restoration and converting it into a mangrove eco-park for the community and tourists. We also propose some public infrastructure in this area.



COASTAL EDGE VISION

We envision making the coastal edge more accessible by providing eco-trails and bike trails along the coastal edge.



MINING AREA VISION

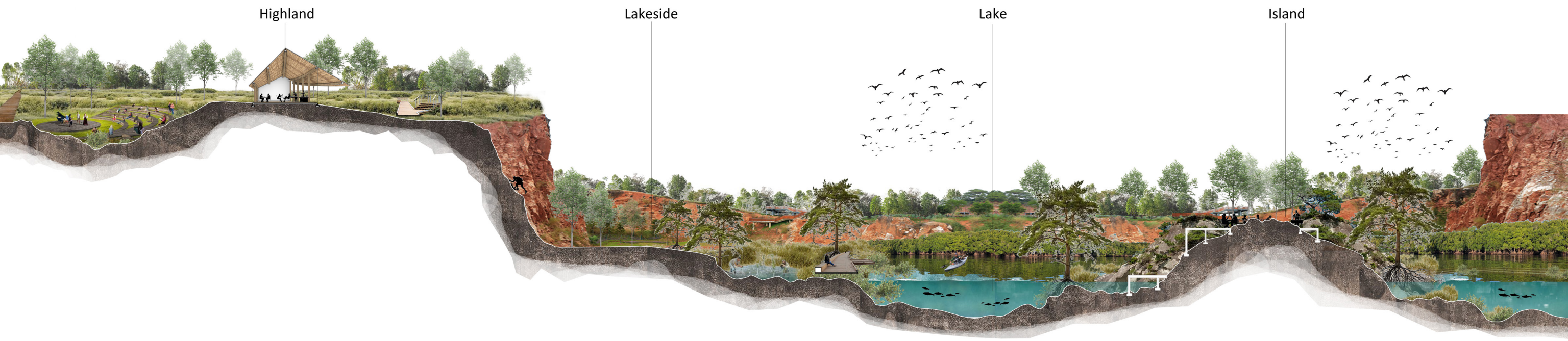
Along with public infrastructure, this area would offer recreational activities such as rock climbing and boating for tourists and locals to enjoy.



STRATEGIC PLAN



LAGOON AREA SECTION



MINING AREA SECTION

We envision restoring the mining area through mangrove restoration and making it a tourist attraction/ park for locals and tourists visiting Punta Cana.



**SITE CONDITIONS IN 1985**

Our site was covered with rich mangrove forests in the past.



**FUTURE VISION 2050**

Mangrove restoration on our site will have transformed many areas by 2050. Our interventions will continue to provide light-touch access and amenities toward this ecological edge.



**PRESENT SITE CONDITIONS**

Over the years, we can see that the rich mangrove forests have been replaced by limestone mining areas used for construction material and roads. We also see more development happening in the inner-city region and along the beach and coast.



**FUTURE VISION 2100**

The whole site will be restored through mangrove restoration by 2100, and the lagoon area will be covered due to sea level rise by 2100.

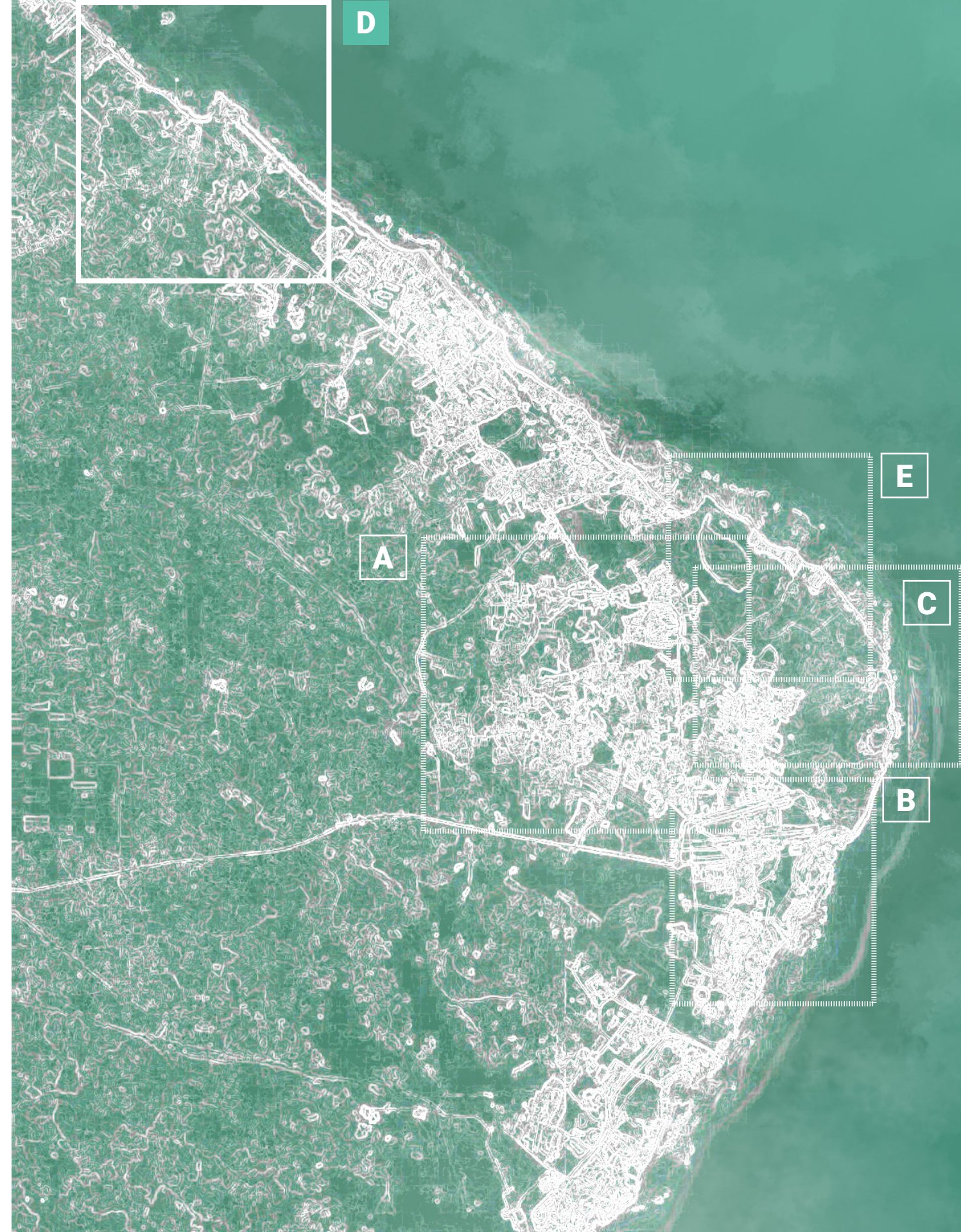


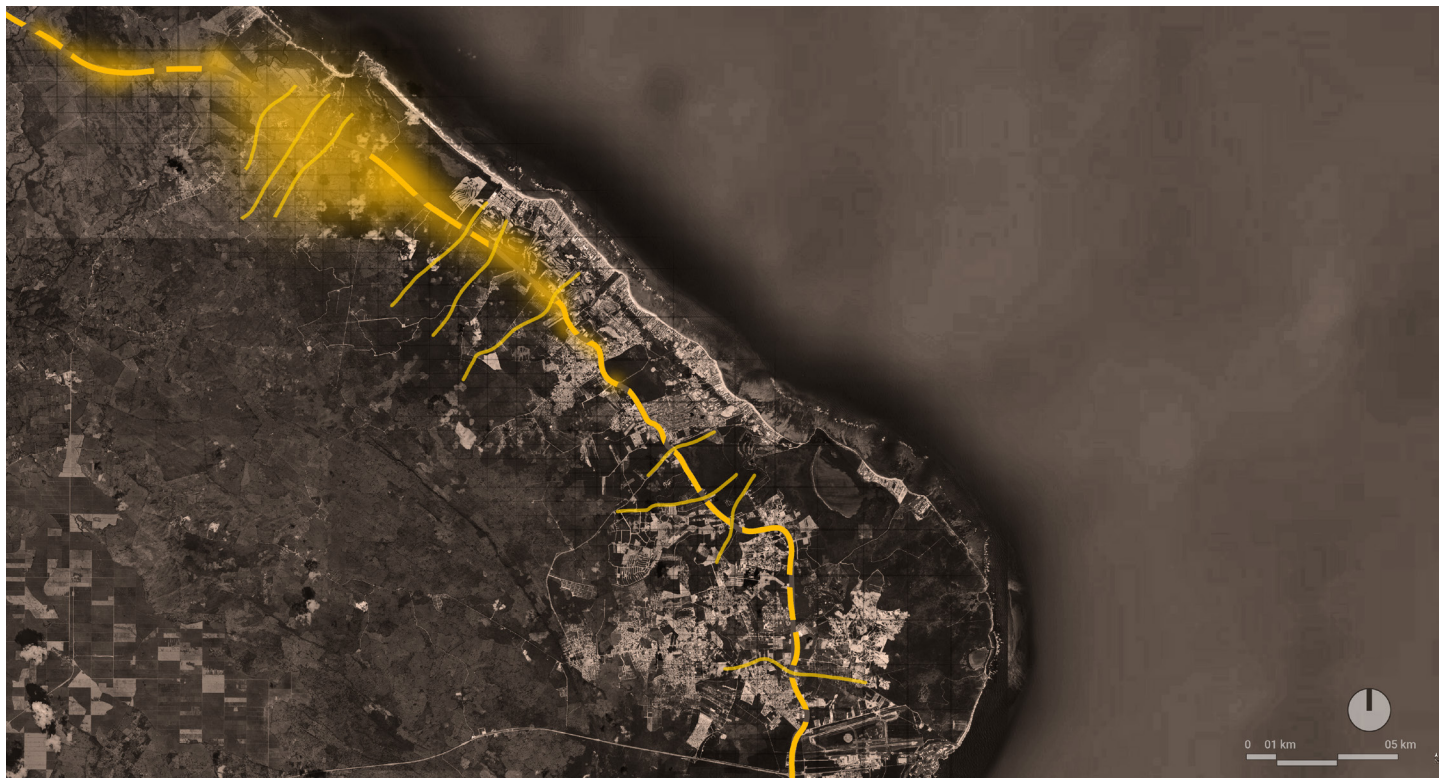
## D. WATER AS CATALYST

### Blurring the Money Edge *By Building Social and Economic Equity*

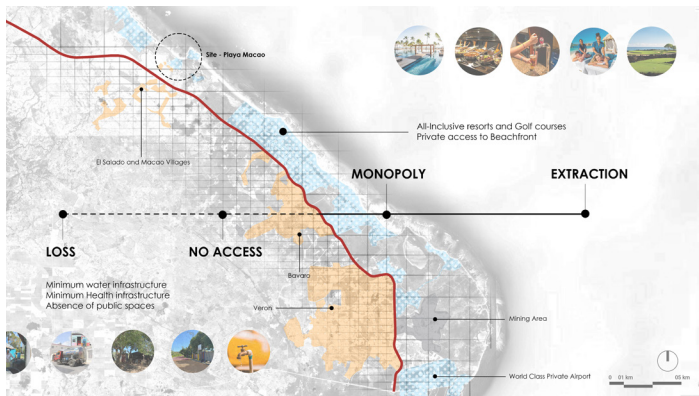
**TEAM: ALIZA MEHNAZ, FAUZAN PERMANA, PERRY DHULESIA, SAHANA KUMAR**

“The Money Edge” or Carretera Higüey-Miches (Highway 105) in Playa Macao aggravates the stark division between affluent tourist hubs along the shoreline and marginalized local communities inland, highlighting the prevailing inequities. Our project aims to blur this divide by establishing essential water and accessibility systems. Prioritizing water and road connectivity, we seek to integrate social and economic capital for the benefit of all communities. This project proposes a robust water network that leverages the natural topography and water flows to diversify water supply and distribution sources. Simultaneously, social infrastructure such as public spaces, well-being centers, schools, vocational training institutes, and community centers are strategically integrated alongside water channels. By blurring the extractive edge represented by the highway through water equity and accessibility network, this project visualizes enhanced connectivity among communities, promoting economic integration and cultural exchange, thereby fostering a more equitable and interconnected Punta Cana.





01 BLURRING THE MONEY EDGE

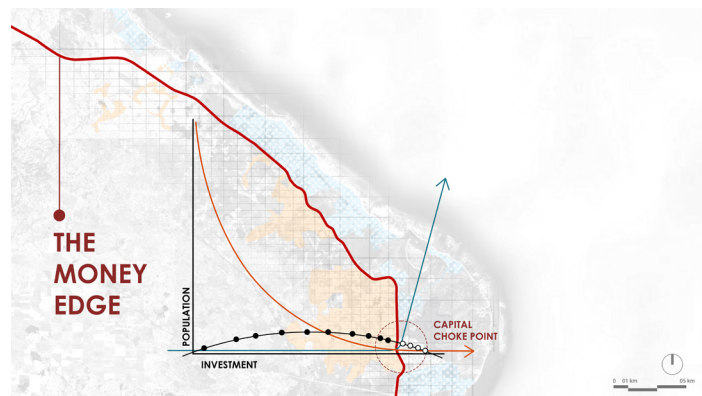


02 CURRENT DISPARITY ANALYSIS

The current development trend in Punta Cana is notably fragmented, ironically delimited by the highway that was originally intended for connectivity. Punta Cana is divided into two remarkably different worlds: the upscale resort and tourist developments along the shoreline and the lower-income communities on the inland side, exacerbating social, economic, and infrastructural inequalities.



04 SITE IMAGES

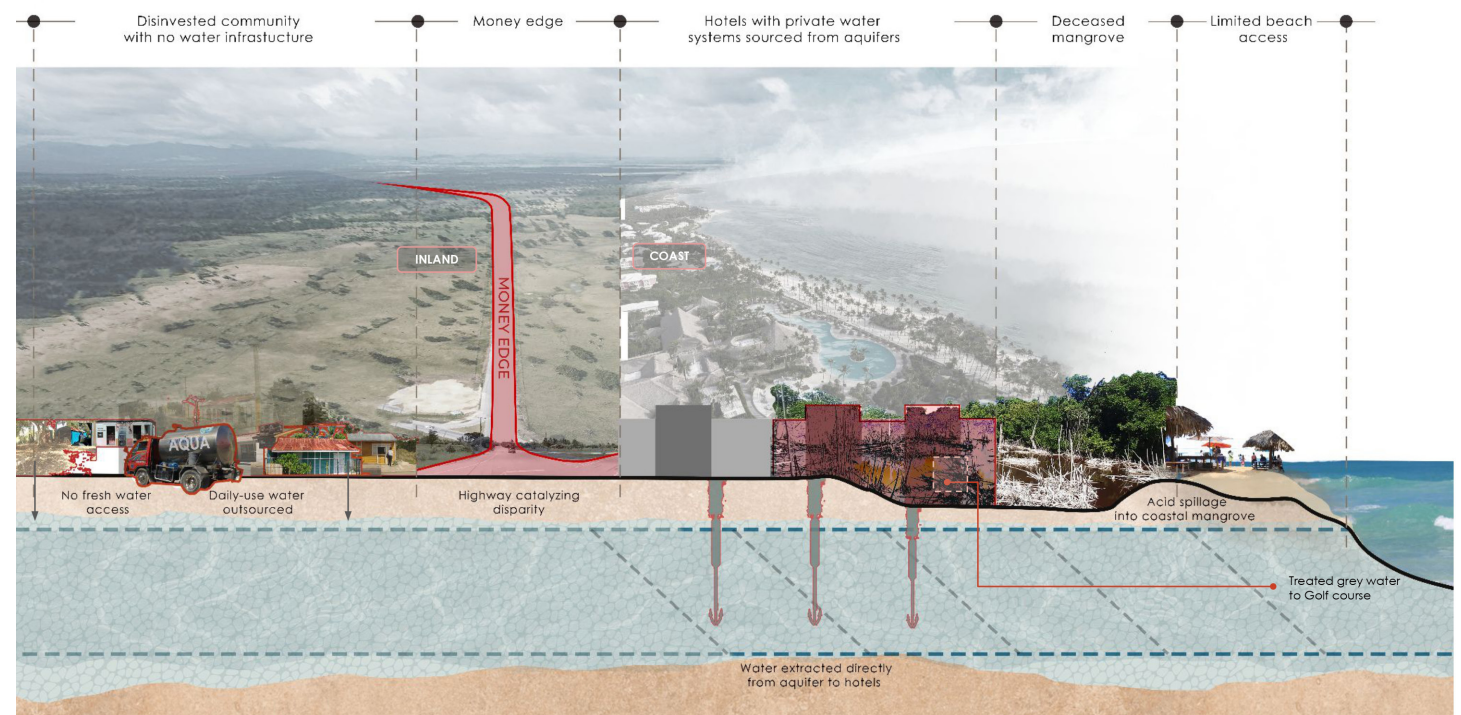


0.3 IDENTIFYING THE MONEY EDGE

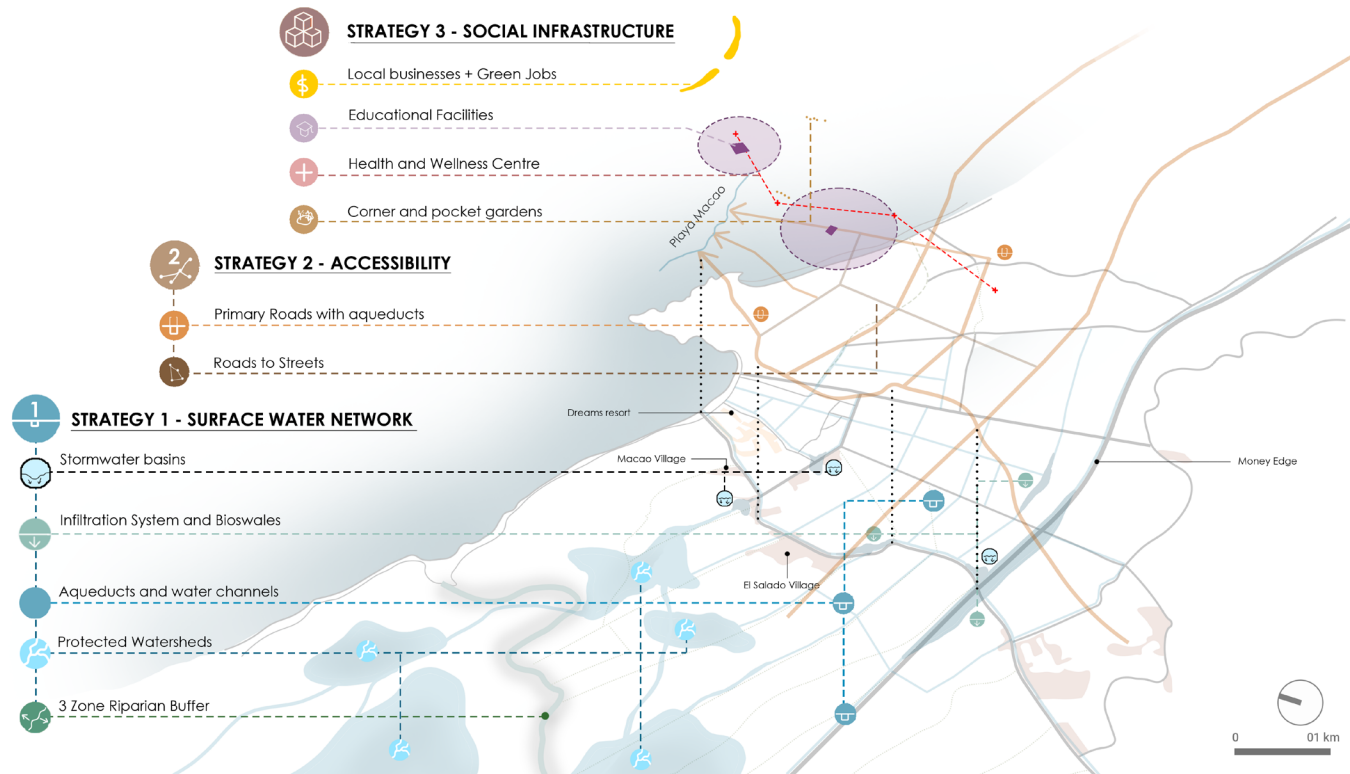


05 COMMUNITY VOICES

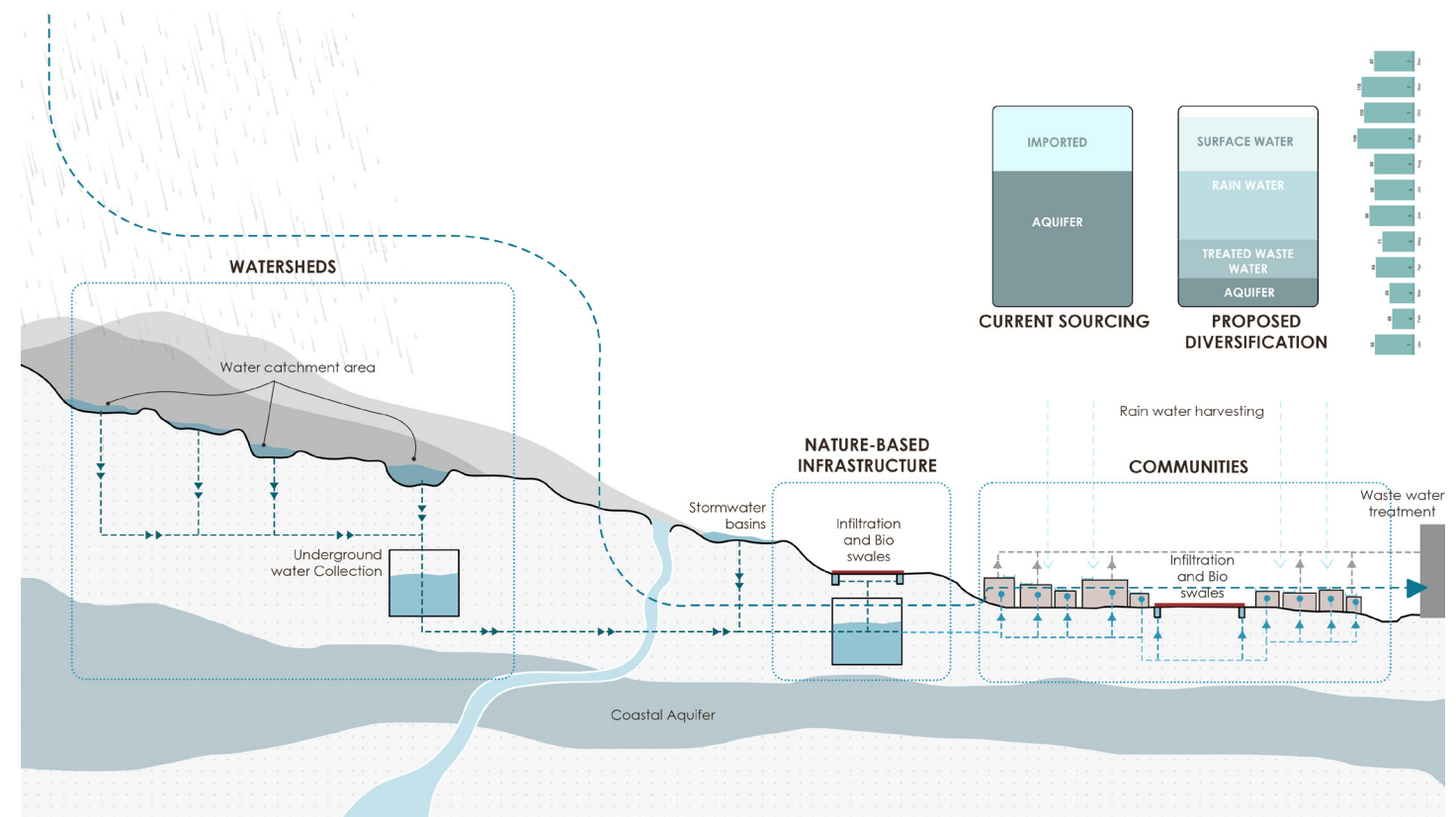
The disparity in access to services between these two juxtaposed urban realities in Punta Cana is striking; While the luxurious resorts enjoy beer taps and other opulent amenities, the local neighborhoods lack basic requirements such as water facilities and rely on purchasing water from trucks.



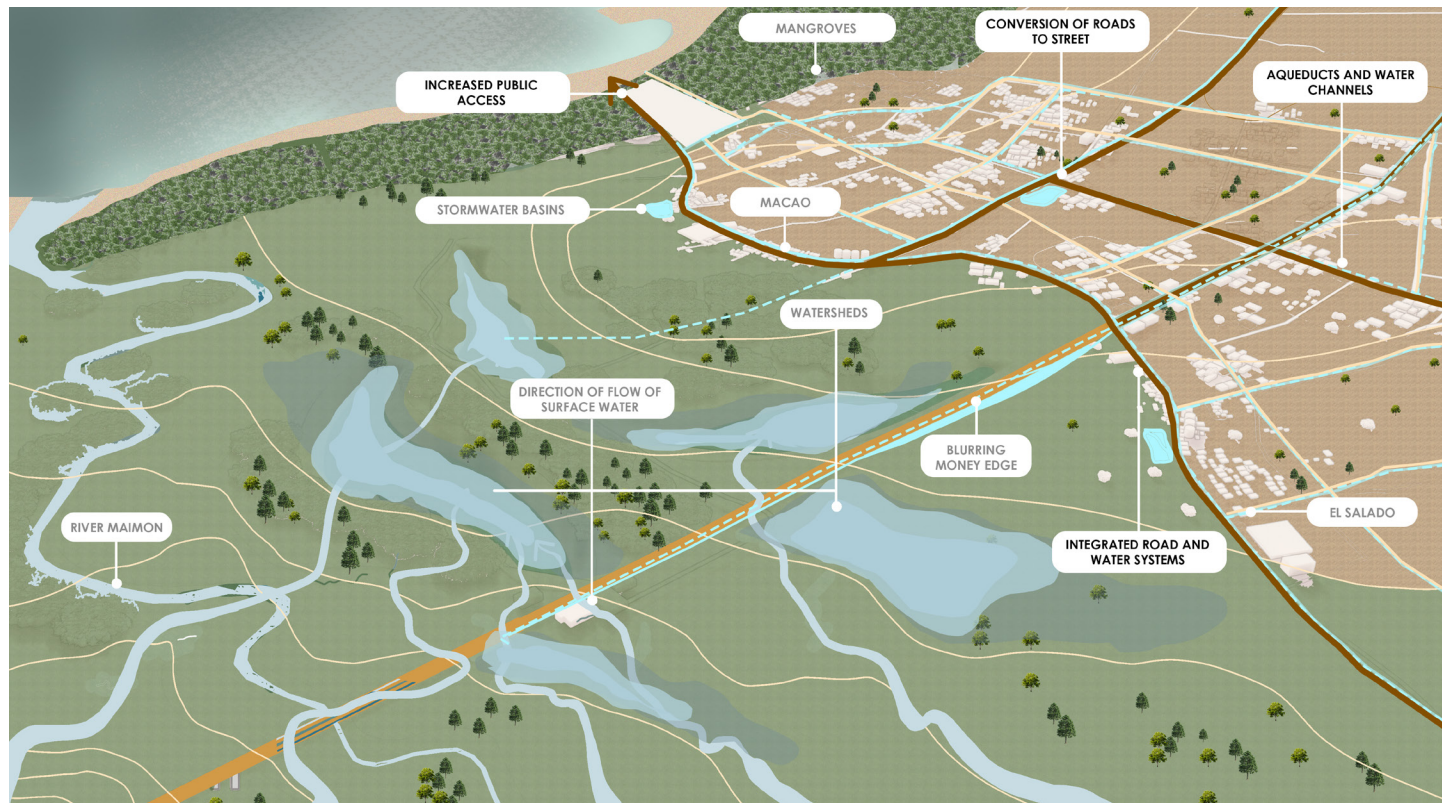
06 TRACING CURRENT DISPARITY DELINEATED BY THE MONEY EDGE (HIGHWAY)



0.1 PROGRAMMATIC STRATEGIC PLAN



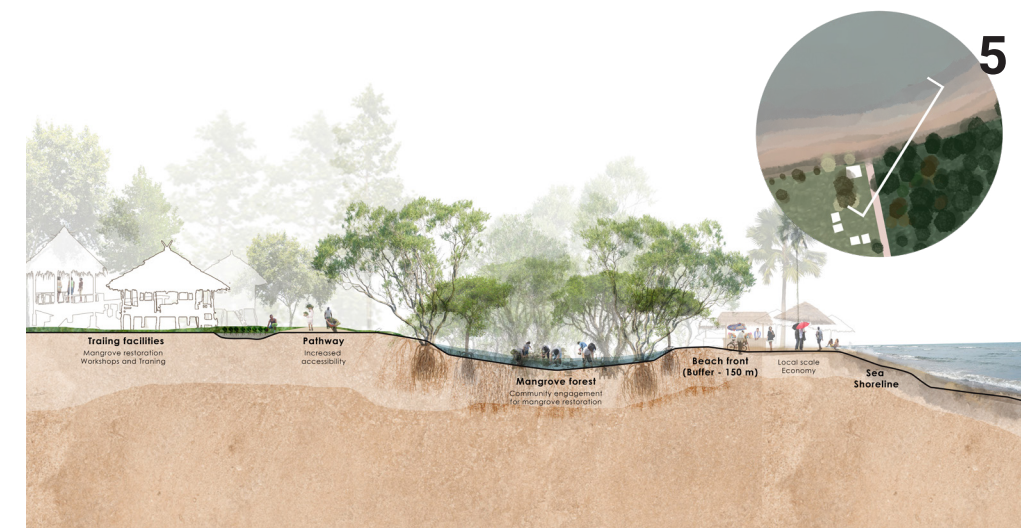
0.3 DIVERSIFYING WATER SOURCES & ACCESSIBILITY - RIDGE TO REACH



0.2 PROPOSAL FRAMEWORK



0.4 POLICY VISION FRAMEWORK FOR 2100

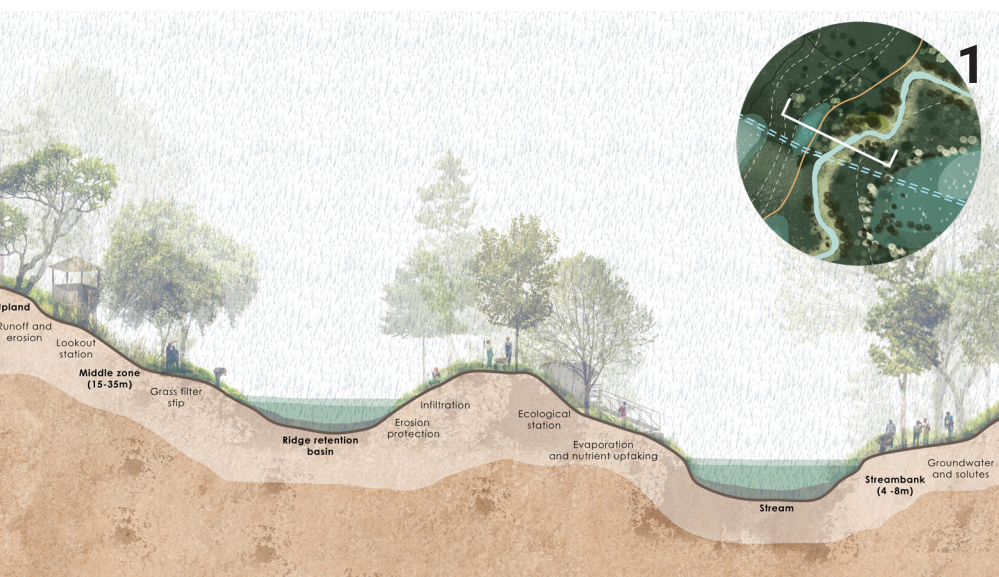


0.6 ECOSYSTEM SERVICES + MANGROVE RESTORATION

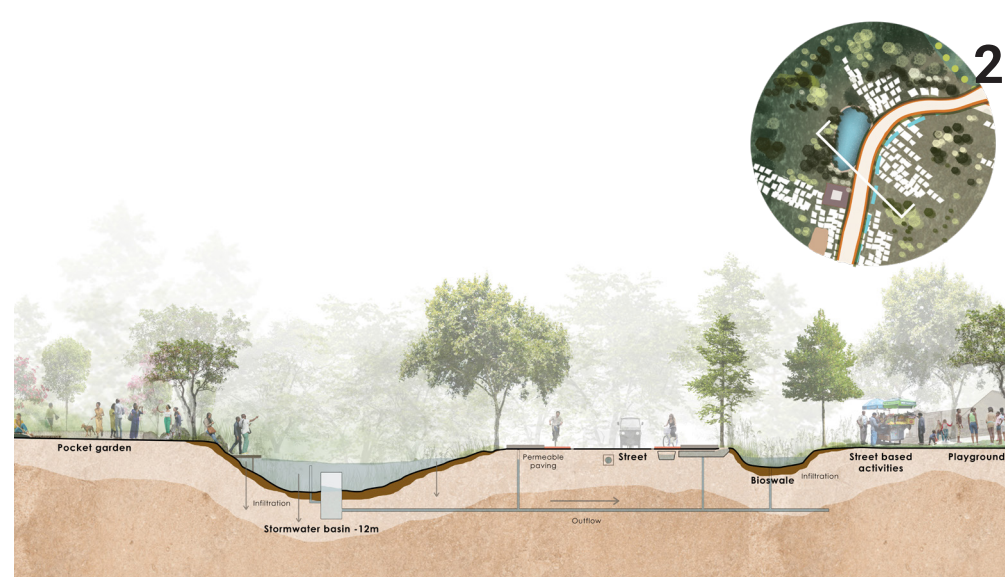


0.5 INFILTRATION SYSTEM

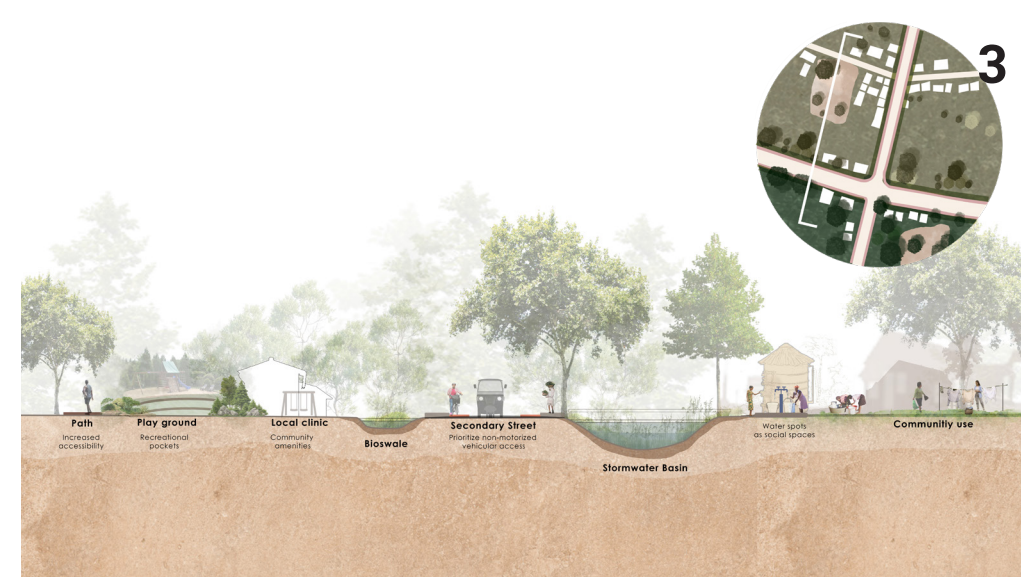
0.1 SYSTEM FRAMEWORK



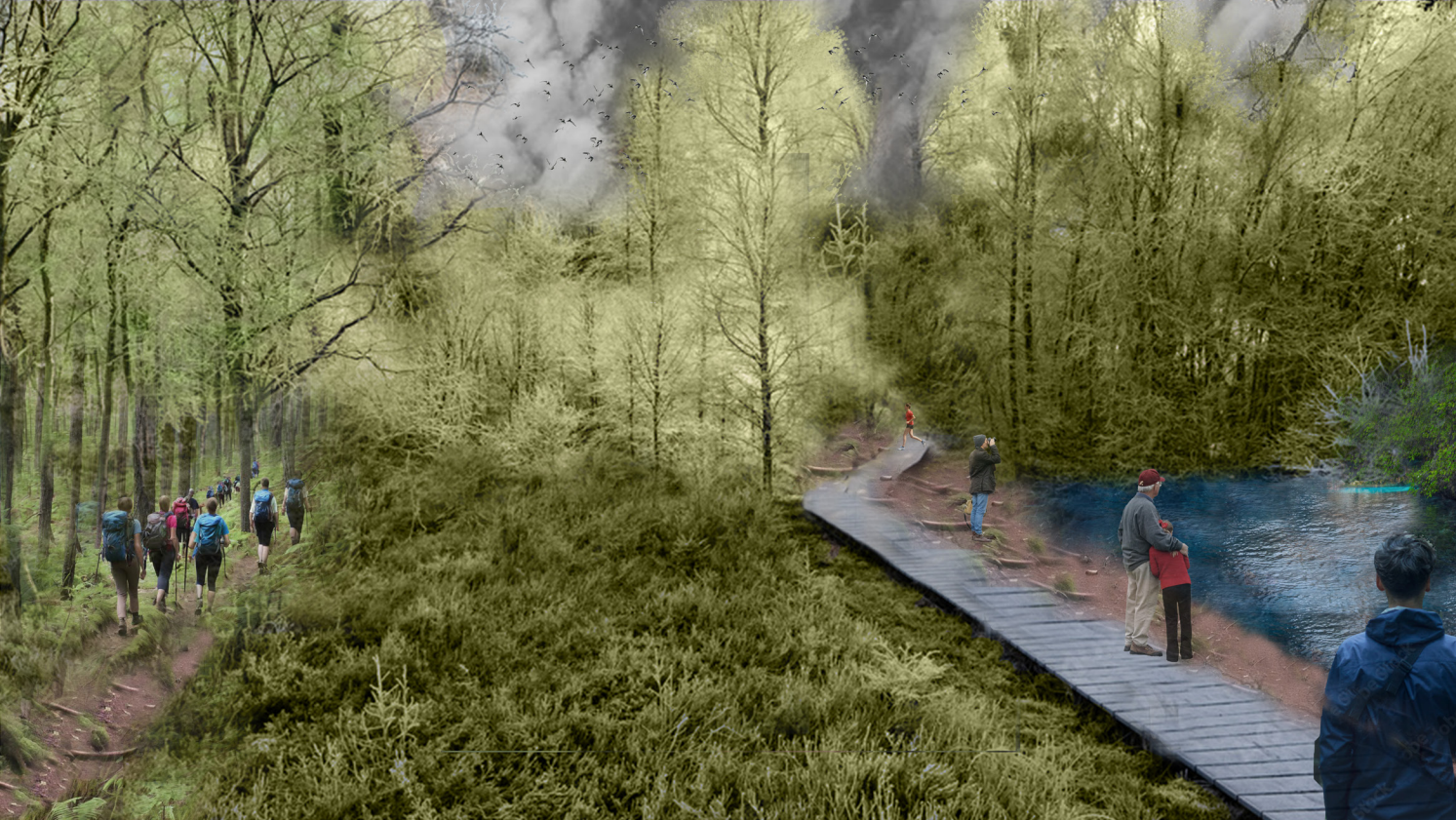
0.2 THREE ZONE RIPARIAN BUFFER



0.3 STORMWATER BASINS



0.4 ACCESSIBILITY + COMMUNITY WATER USE



0.1 SUSTAINABLE TRAILS IN PROTECTED WATERSHEDS



0.3 INCLUSIVE, ACCESSIBLE BEACHES AND MANGROVE RESTORATION



0.2 STREETSCAPES FOSTERING COMMUNITY INTERACTIONS, ACCESSIBILITY AND WATER EQUITY



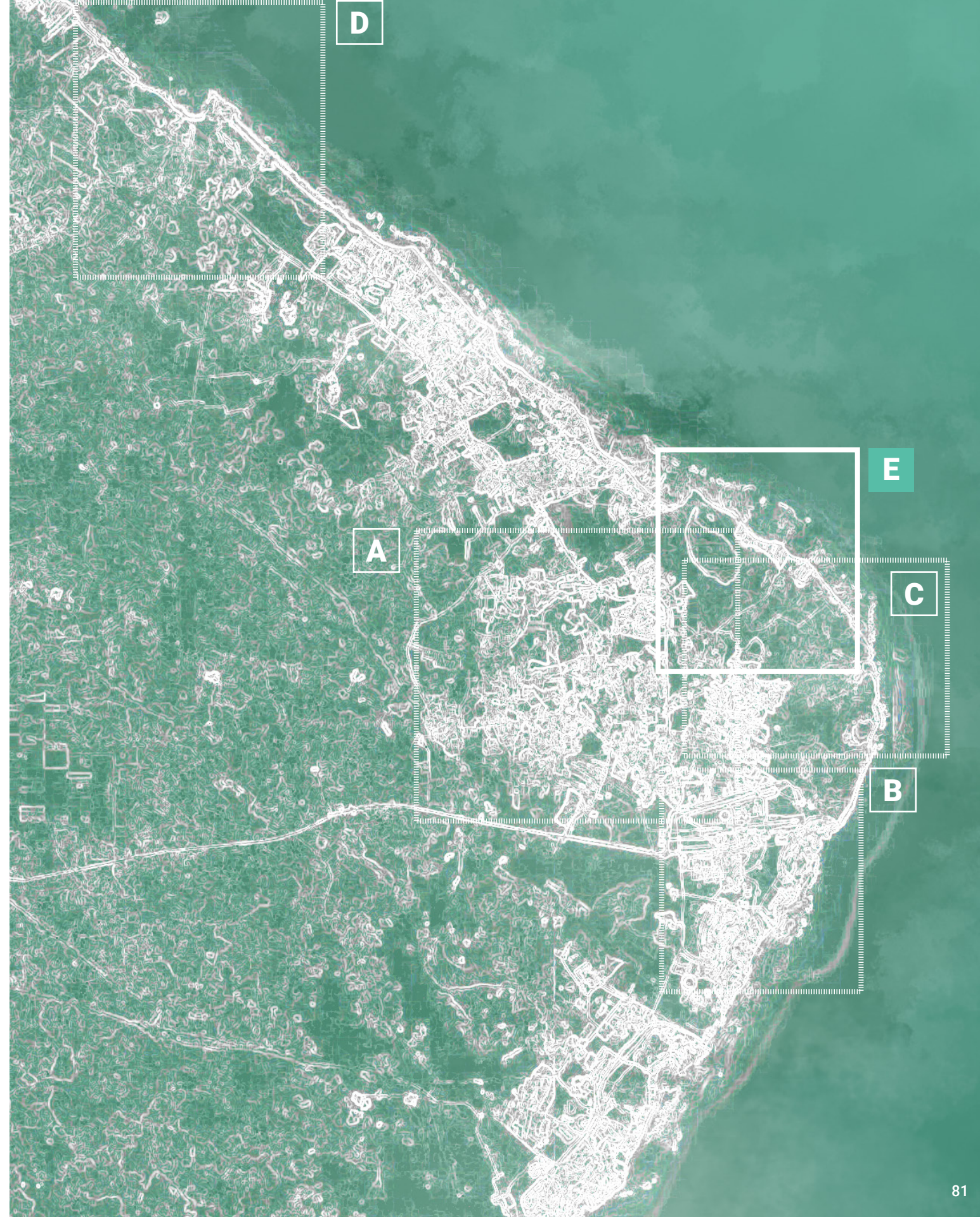
# E. BRIDGING THE BLUES

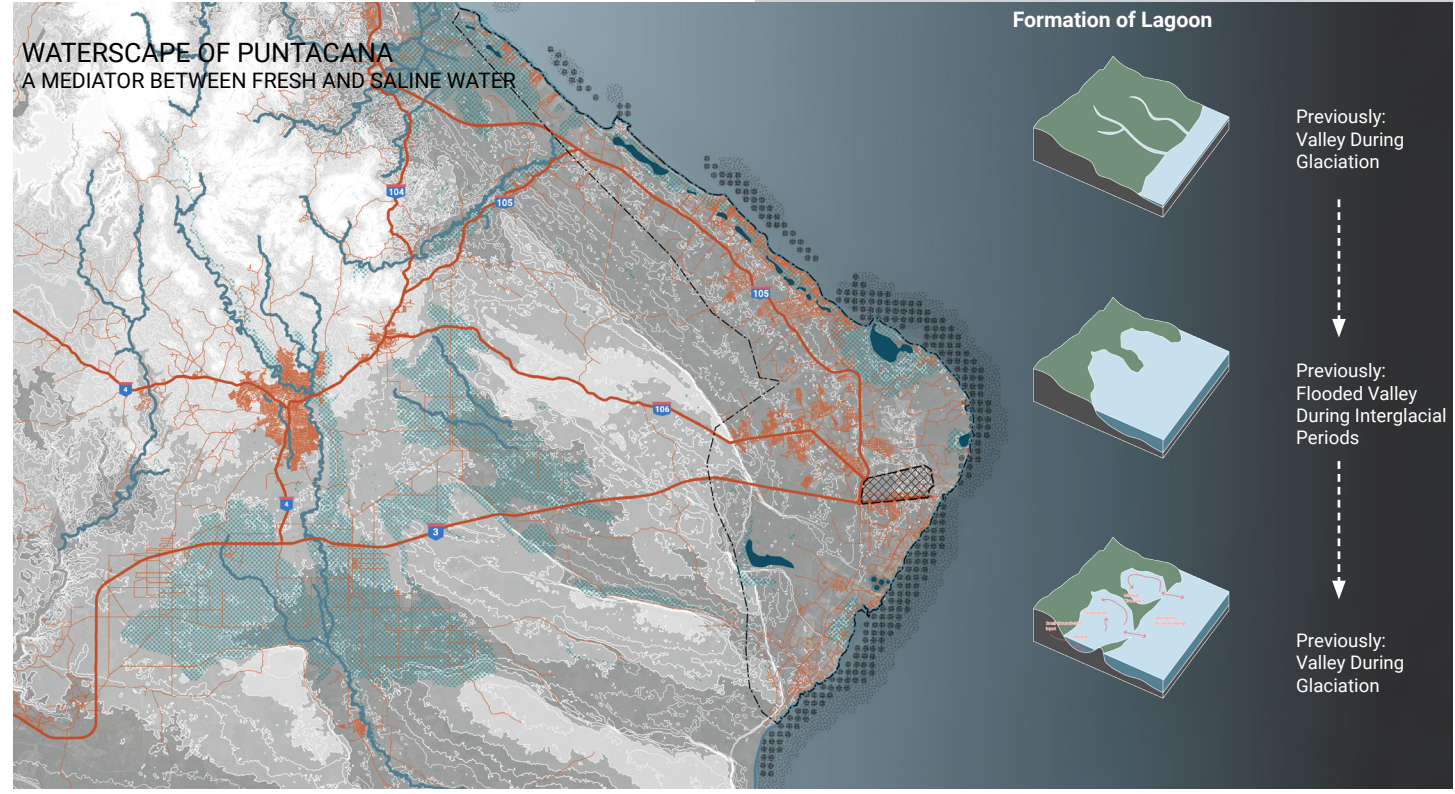
## Revaluating and Integrating the Waterscapes of Punta Cana

TEAM: HEEJUNG KIM, MRUNMAYI MANDAN, PRIYAL SHAH, YICHI WANG

Our project is a manifestation of balancing the complexities of Punta Cana's profound ecology with respect to the rapidly growing economy. Bridging the Blues is a response to reinstate the devalued lagoon wetland system of Punta Cana and the threatened ecology due to the growing, invasive tourism industry.

We emphasize the importance of Laguna Bávaro, central to our area of consideration, and promote its ecological conservancy by encouraging mandatory ecological stewardship by private developers. We strategize integrating the vast, vulnerable greenscapes and waterscapes by activating the shoreline, conscious urban densification, and hydrological connection. By instigating more significant environmental responsibility among stakeholders, we envision a resilient Punta Cana, ready to adapt to the climatic inevitability of sea level rise by 2100.

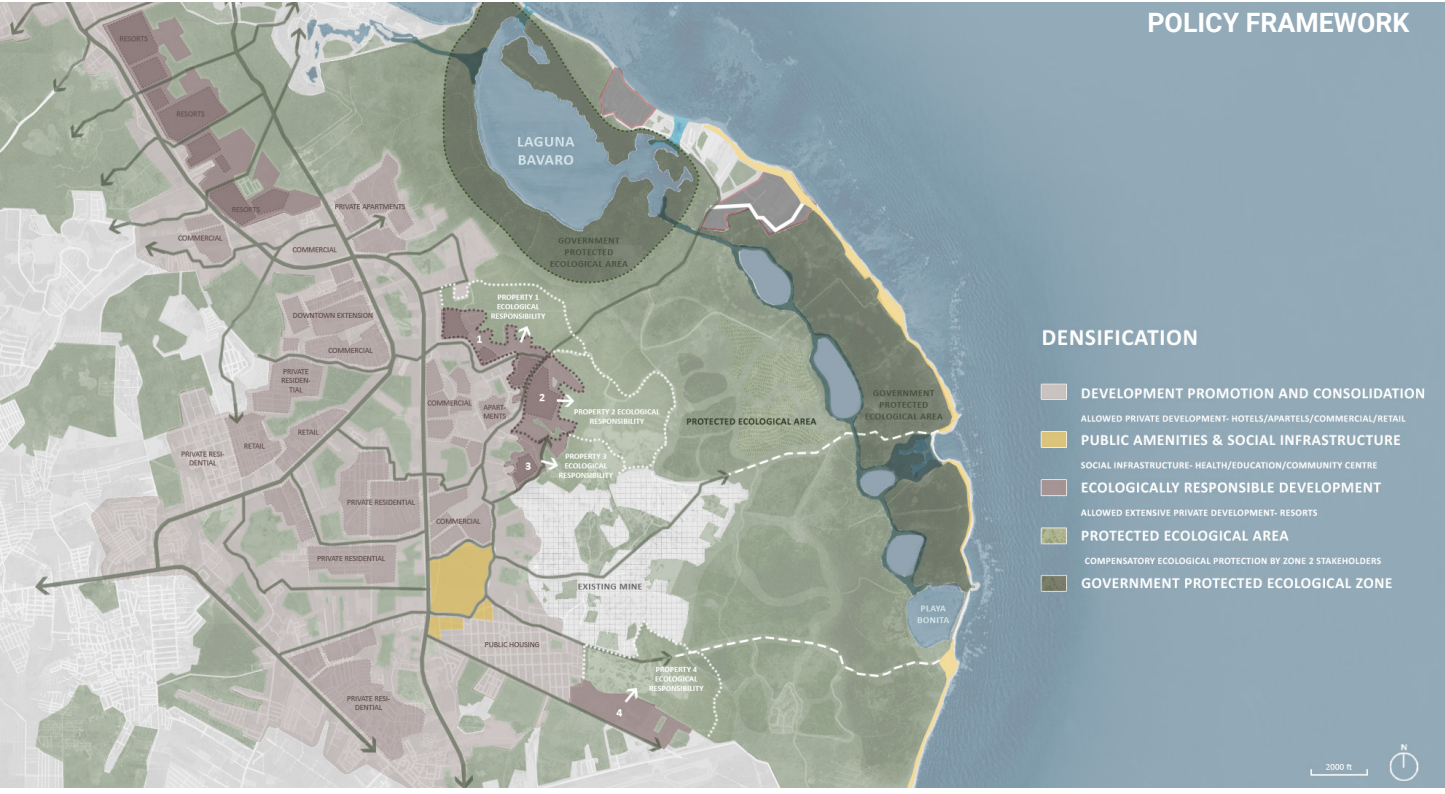
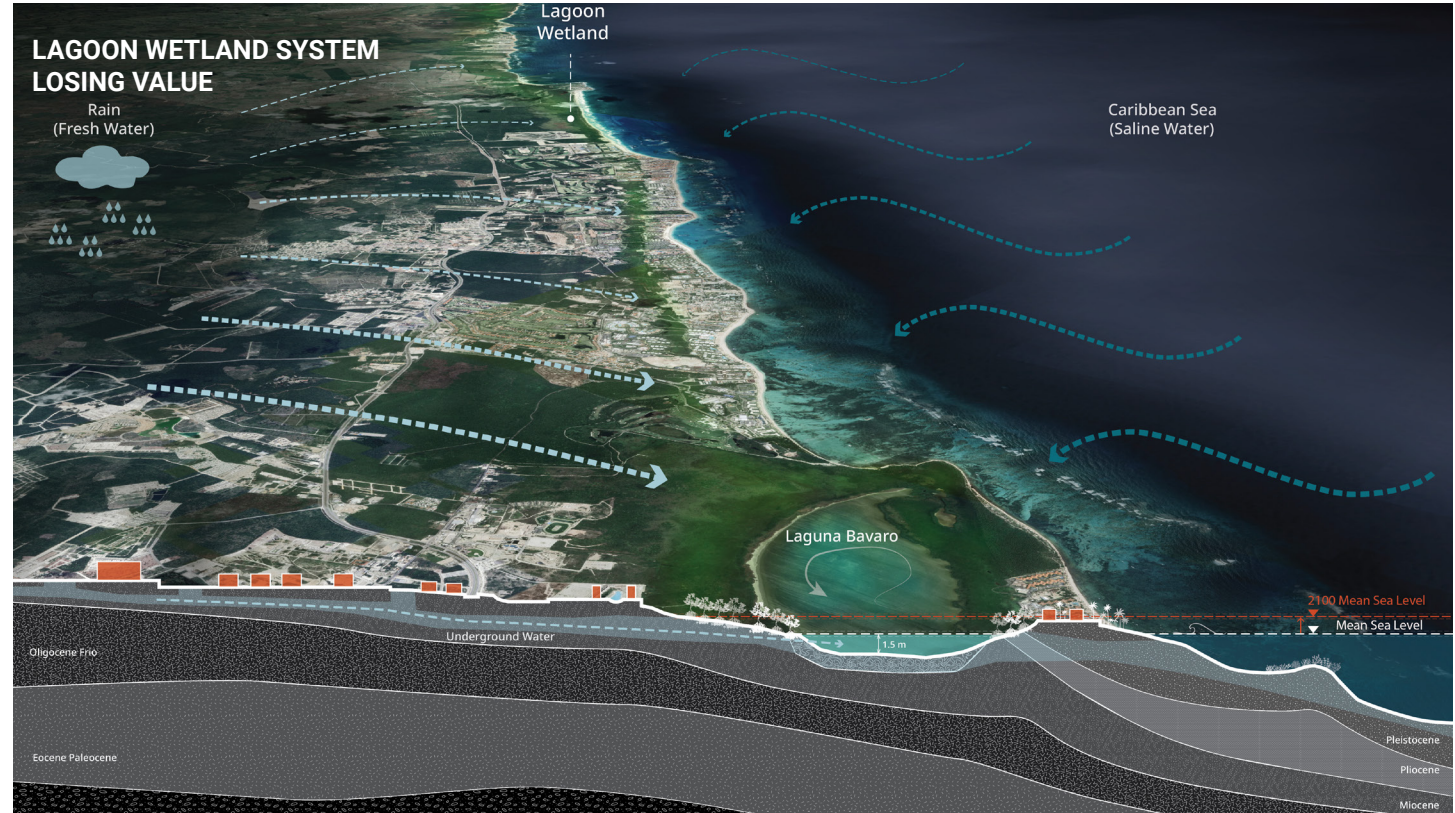




**0.1 WATERSCAPE OF PUNTACANA**

The lagoon wetland system acts as a mediator between the freshwater from higher topography on the west and the saline water from the east side Caribbean Sea. The valleys flooded previously, and the coastal currents shaped the barrier to reveal the creation of these lagoons.

In the last few decades, tourist developments of roads and hotels have gotten closer to the lagoon wetland system along the coastline, consuming the land and threatening its ecosystem. Our area of consideration spans between Laguna Bávaro, the largest lagoon in the area and Mala Punta in the southern part.

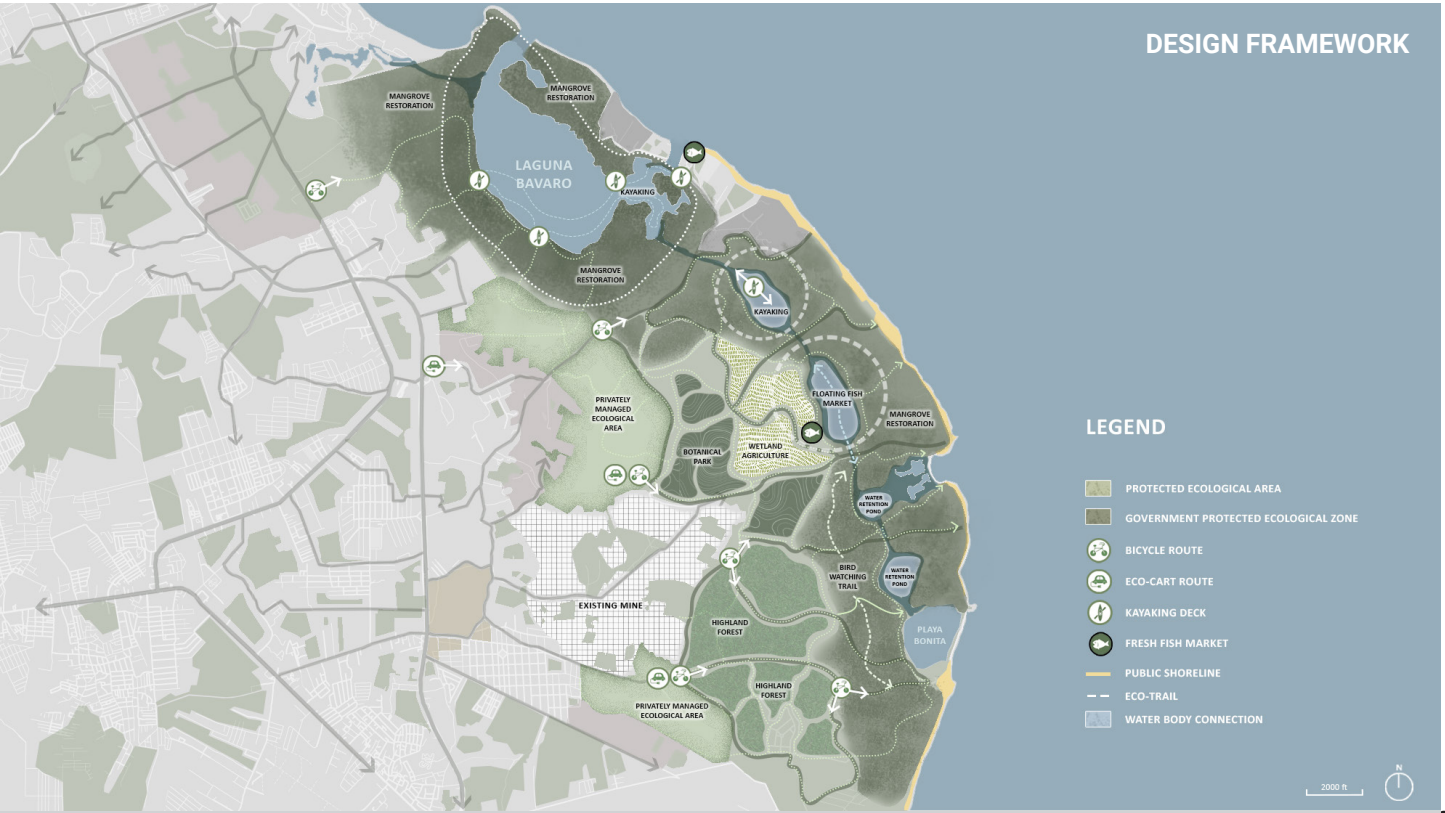


**0.2 POLICY FRAMEWORK**

We adopt an approach of negotiation with private developers and propose a framework plan that promotes conscious densification inland. The plan consists of introducing social infrastructure, mandating ecological stewardship by developers, and expanding government-protected areas.

**0.3 DESIGN FRAMEWORK**

We propose a link of ponds connecting the lagoons with the Caribbean Sea as a response to the inevitable rise in sea level. Additionally, we introduce programs like rainwater harvesting plains, botanical gardens, wetland agriculture, and stormwater-absorbing lands.

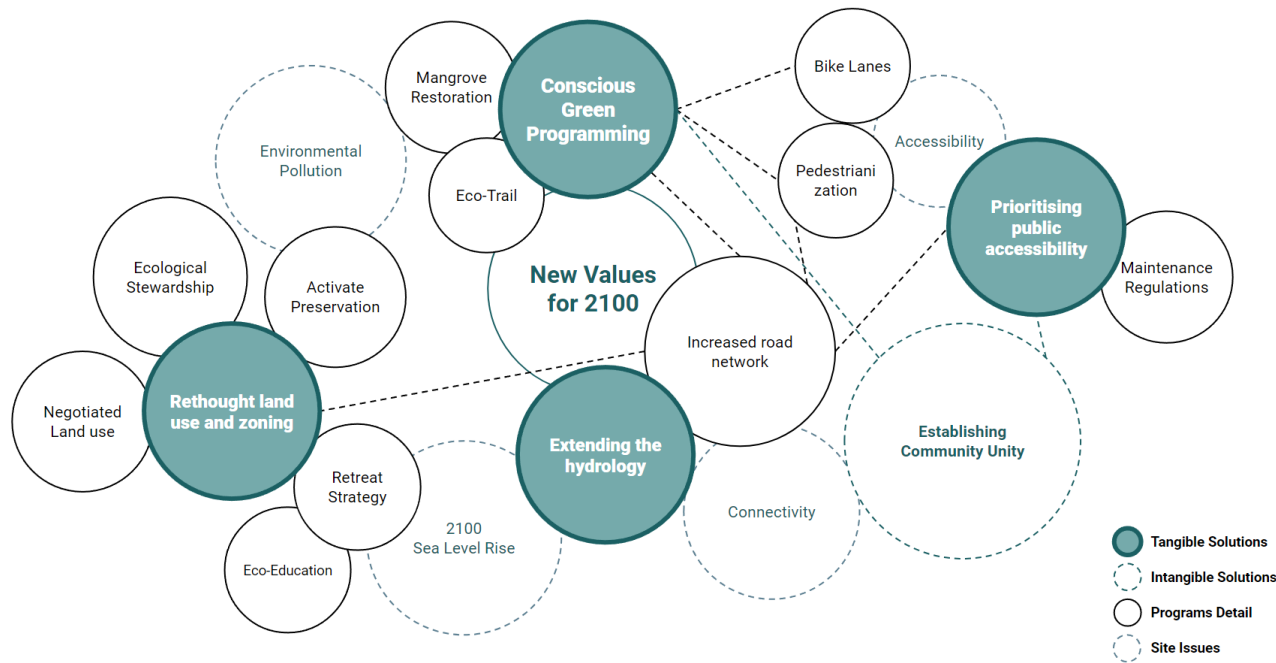


# Water is our client.

We intend to **ACTIVATE** and integrate the greenscapes and waterscapes of Punta Cana to restore its rich ecological value

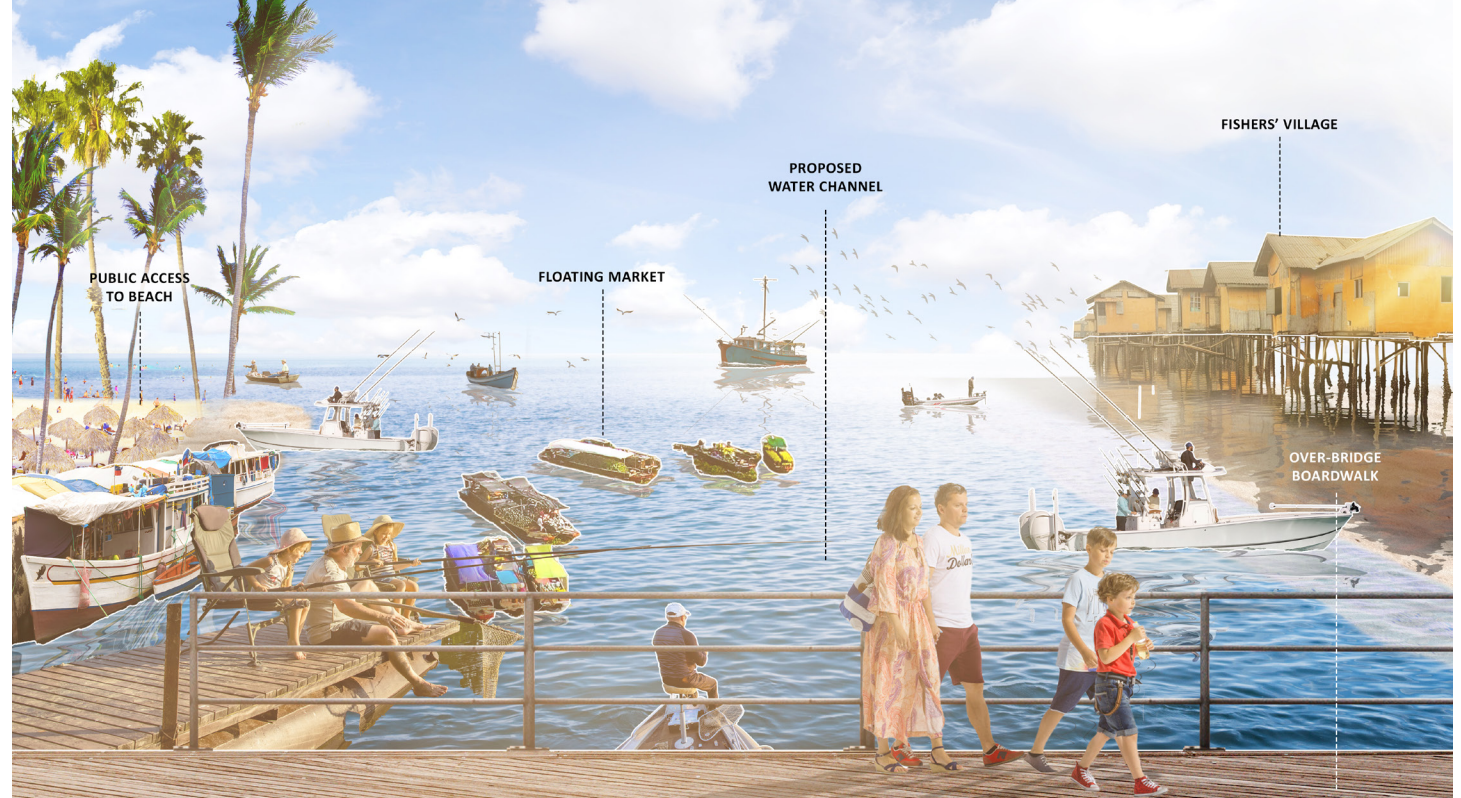
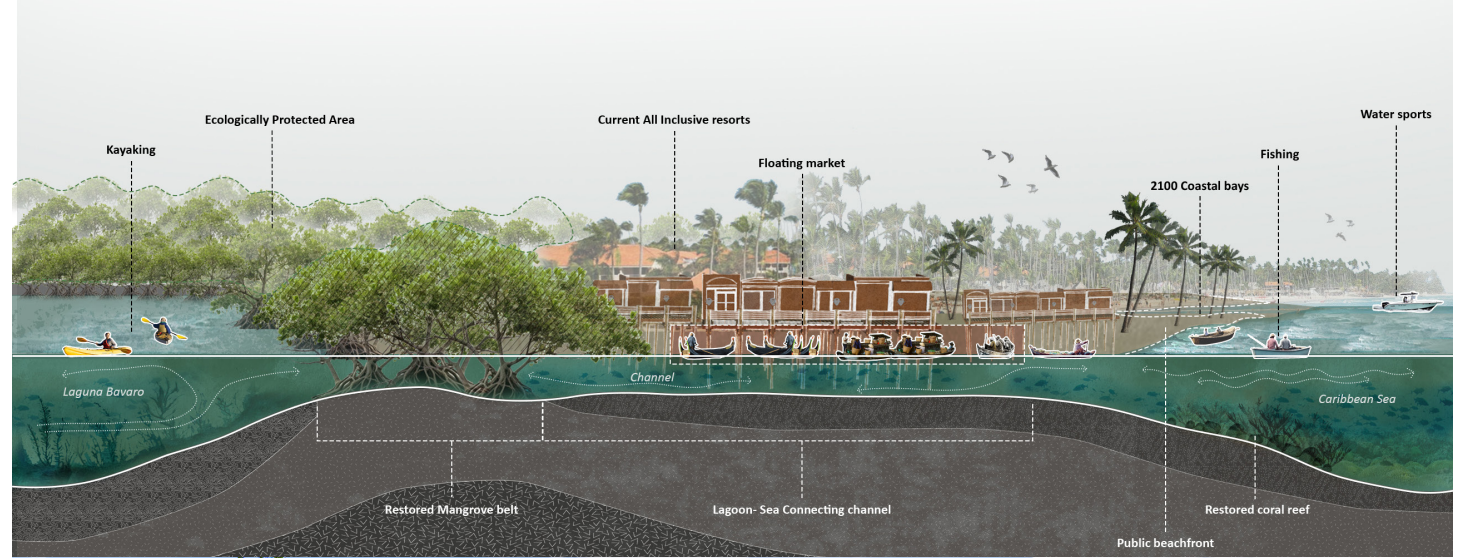
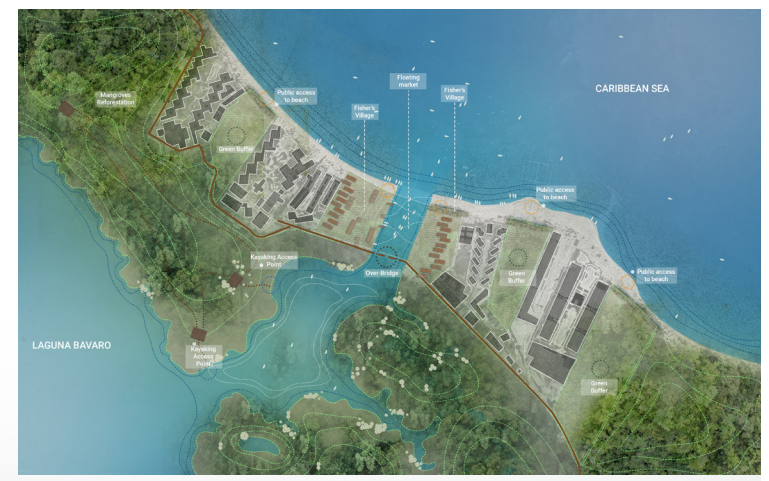
We promote a conscious urban **DENSIFICATION** by establishing clear regulations on development & maintenance while introducing efficient infrastructure

We envision a **CONNECTED** Punta Cana with revalued ecology and a balanced economy



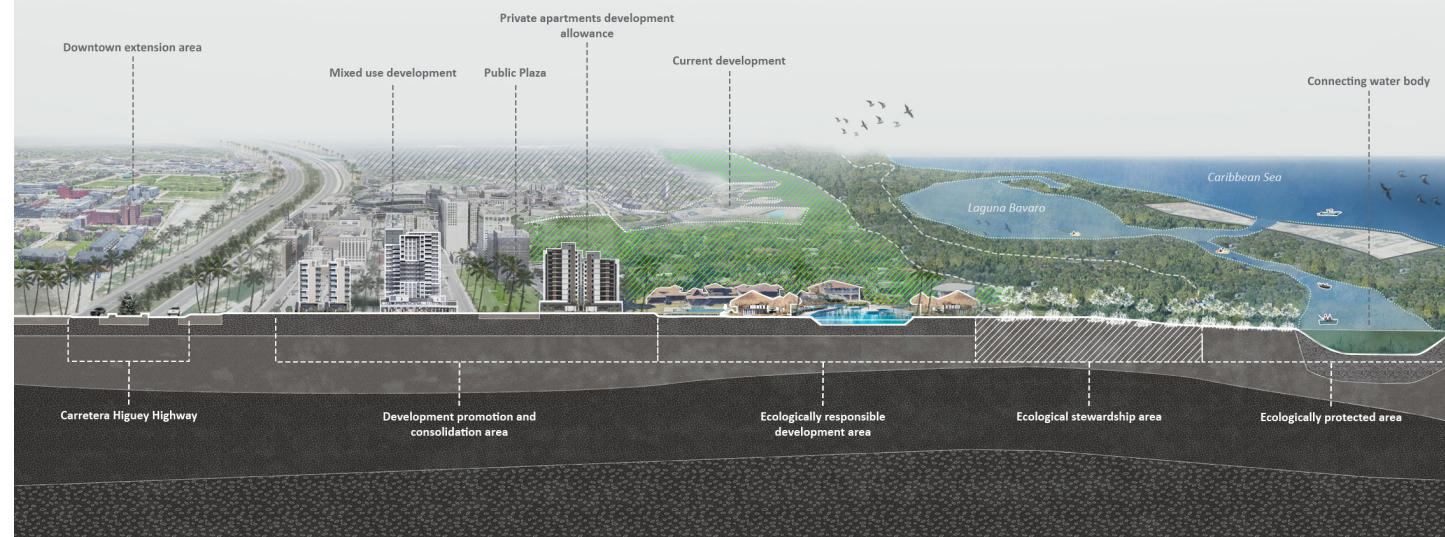
## SCENARIO 1 - ACTIVATION

Based on sea level rise by 2100, we propose creating a channel through the all-inclusive resorts to connect the lagoon with the sea. This connection would act as a surge regulator and help increase the lagoon's flushing rate. At the current coastal settlements, we envision the existing fishing village on stilted units thriving around the channel and welcoming activities like fishing and kayaking.



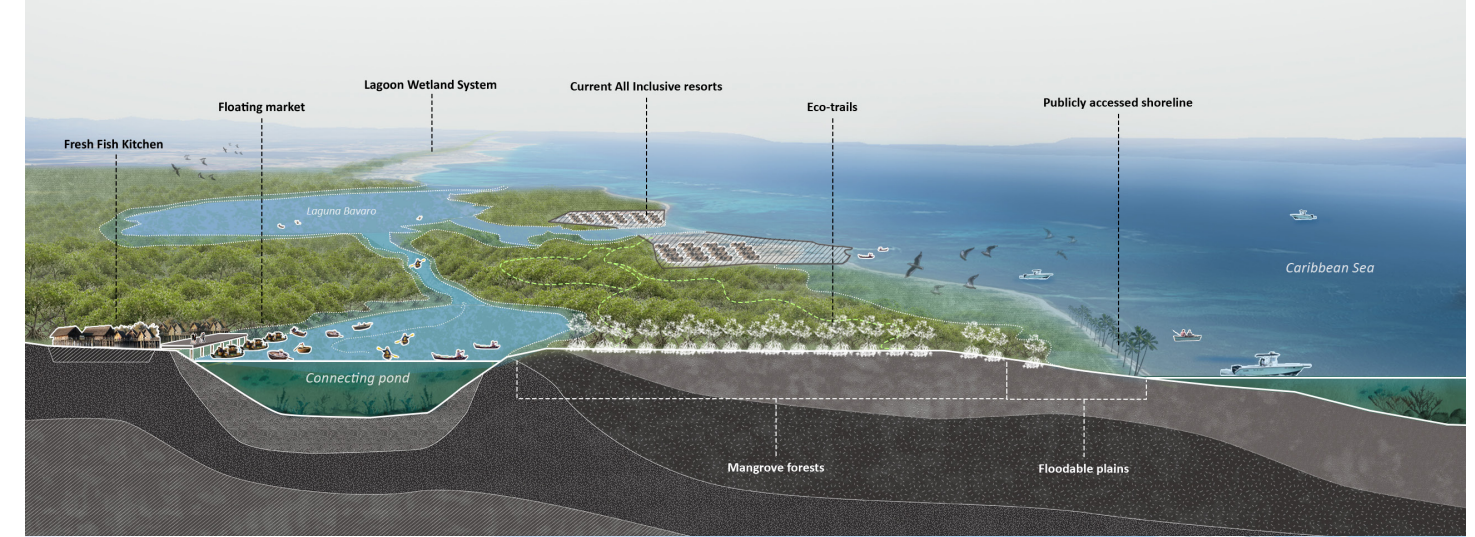
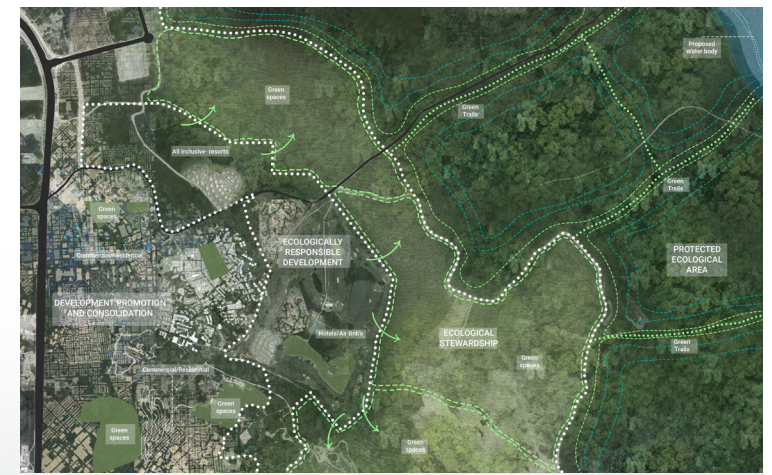
## SCENARIO 2 - CONNECTION

The introduced string of water bodies helps distribute surge stress and pockets of newer ecological settings across the inner coast. This new hydrology that links the inner coast would create grounds for varied ecosystems and respond to the increasing sea level rise in subsequent years. Through our fishing micro-programs, we intend to reinstate a new value to this ecology.



## SCENARIO 3 - DENSIFICATION

We promote densification and reworked land use policies to contain the growing urban sprawl. Ecological stewardship will be mandated in areas of allowed private occupancy. This intertwines with our policy of matching the economic demand for privatization by planning commercial and mixed-use districts. Allowing conscious growth of the tourism industry would be vital to supporting Punta Cana's environmental well-being.



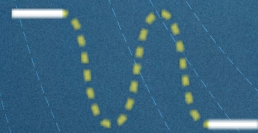
# 2030 Vision

BRIDGING THE BLUES

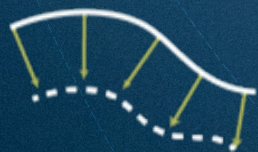
## 1. Densification



## 2. Connection



## 3. Activation



Highland forest

Open Green area

Mala Punta

Connecting ponds

2

Wetland agriculture

Botanical garden

Privately managed ecology

3

Densified urban development

Extended Downtown

2100 Lagoon extension

Laguna Bavaro

1

2100 adaptive fisher's settlements

# COMMUNITY VOICES



**Juan Carlos Sánchez**  
Distrito Municipal Turístico Verón-Punta  
Cana

*“There is a fishers’ village along the publicly accessed part of the coast; we have proposed to relocate it inland in order to give out the land for developers.”*



**Gustavo Valdez**  
Associated Architect, Cristóbal Valdez  
y Asociados

*“We propose the water channel along the coastline, connecting the lagoons and wetland.”*



**Jake Kheel**  
Grupo Puntacana

*“We were the first to envision and develop this area to what it is today and are committed to the social, tourist and economic development of Punta Cana!”*



**Shaney Peña Gómez**  
Ministerio de Turismo

“

*Verón-Punta Cana has become, in my opinion, the most complex territory on the entire island. More than Santo Domingo (the capital city), even more than the border region. It sums up the challenges and transformational changes that we have to address in this century, natural capital, social fabric, and the balance between successful private investment and the infrastructure it demands.*

”



**Mizooocky Mota**  
Professor, Diseño 7 - UNPHU

“

*The results of the collaboration between Columbia University and the Universidad Nacional Pedro Henríquez Ureña demonstrate the need to continue addressing the future of Punta Cana from an interdisciplinary and collaborative approach. This experience has revealed the urgency of rethinking our Caribbean cities from a resilient and adaptive perspective, reflecting on the construction of more inclusive and sustainable spaces in the face of the impacts of climate change. In this scenario, Punta Cana faces key challenges for its sustainable development, such as the management of accelerated urban growth, the preservation of its coastal ecosystems, equitable access to infrastructure and housing, and the diversification of its tourism economy. The real challenge is to promote a development model that integrates economic growth with environmental sustainability and social equity, ensuring that each community and its territory are an active part and beneficiaries of urban transformation.*

”