

LONG ISLAND

FREEPORT

Remilekun Omoleye, Yijing Xiao

118

LEVITTOWN

Vritti Bhamri, Aljoharah Turki Althynayan, Vidhi Trivedi

122

BELLMORE

Zehra Zaheer, Giovanna Luz Moreira, Tianyi Shi

130

LONG BEACH

Aishwarya Warad, Xiaonan Li, Zhouhang Yu, Dzormo Naa Cofie

140

BABYLON

Daniela Monroy Zendejas, Samantha Nowak, Mason Rape, Miguel Ángel Santivañez López

148

LIRR

Yiting Li, Haoyang Chang, Ting Chu, Sunghwan Park

158

RONKONKOMA

Rebecca Koh, Romina Quinn, Xinyue Wang, Yung-Hsiang Yang

166

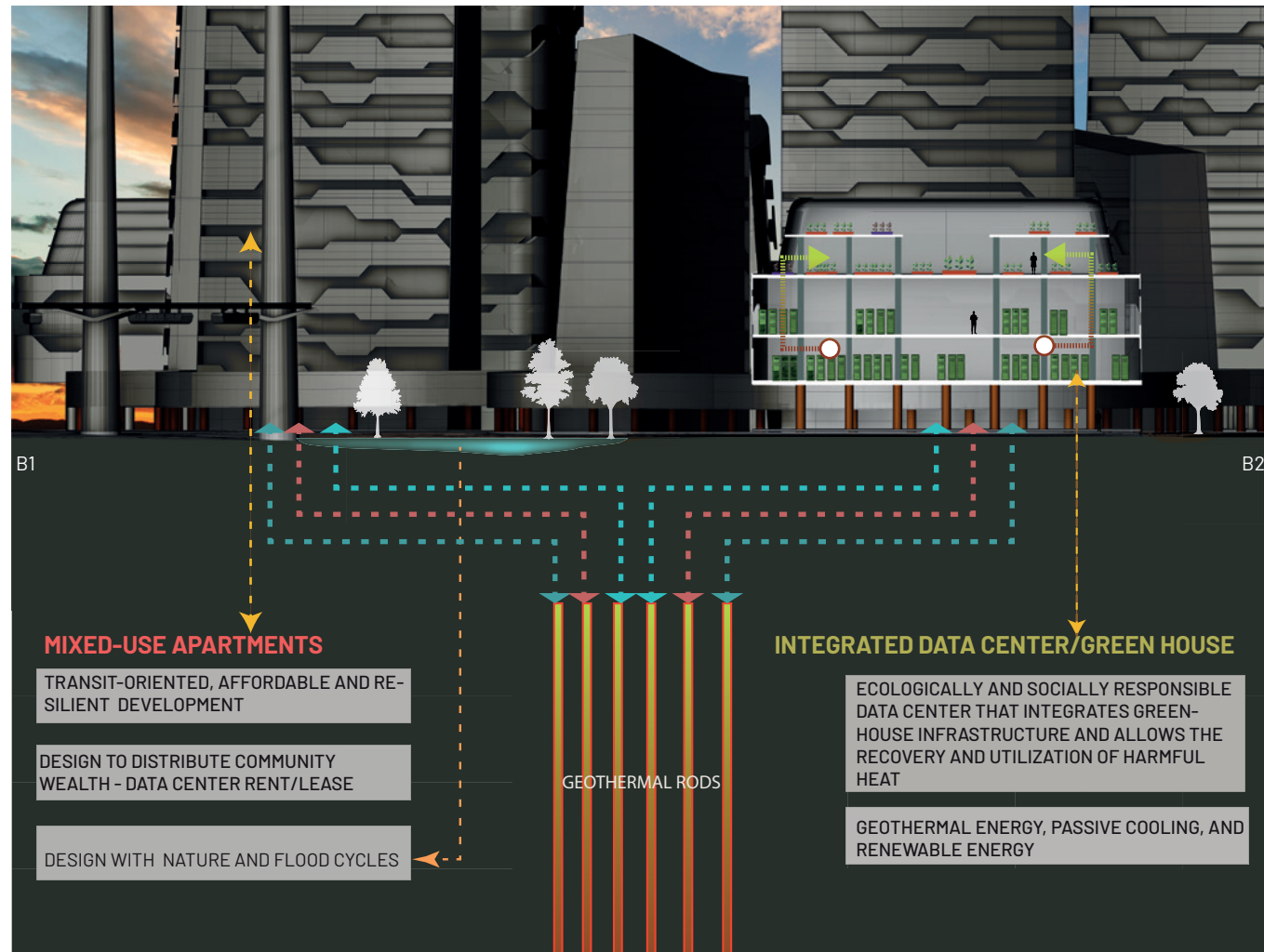
FIRE ISLAND

Deepanksha Gillakamsetty, Manuela Hurtado, Susana Chinchilla, Yi-Jou (Zoe) Lin

176



Design Principles



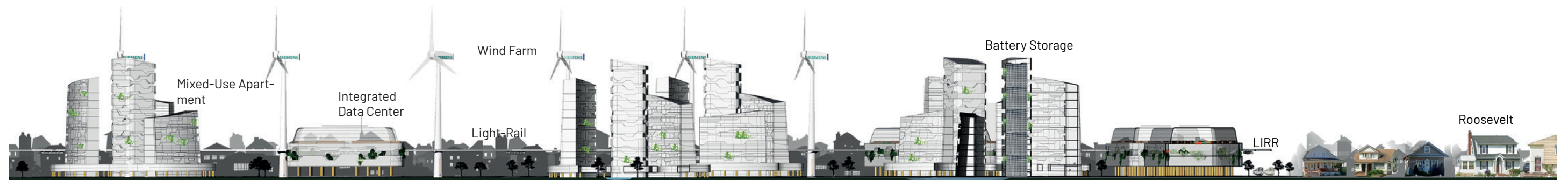
With Meadowbrook Parkway Removed, the Marsh and Stream Are Restored



The Meadowbrook Parkway, though vital to regional mobility, has long been a silent contributor to environmental decline. Vast asphalt surfaces prevent rainwater from seeping into the ground, increasing runoff and flooding. The dark pavement absorbs heat, amplifying the urban heat island effect. The dependence on personal vehicles powered by fossil fuels accelerates carbon emissions and global warming.

Section A1-A2: Renewable Corridor – Urban Elevation

The section compares today's LIRR line and surrounding low-rise houses with our proposed climate corridor: a light-rail viaduct, wind turbines, energy towers with mixed-use programs, integrated data centers with greenhouse podiums, and water-retention basins forming a new landscape between the rail and the neighborhood.



Catchment Basin

Anticipating The Data Ridge – Creek, Rail And Housing

Unfenced: The New Recipe

LEVITTOWN TO JONES BEACH, LONG ISLAND

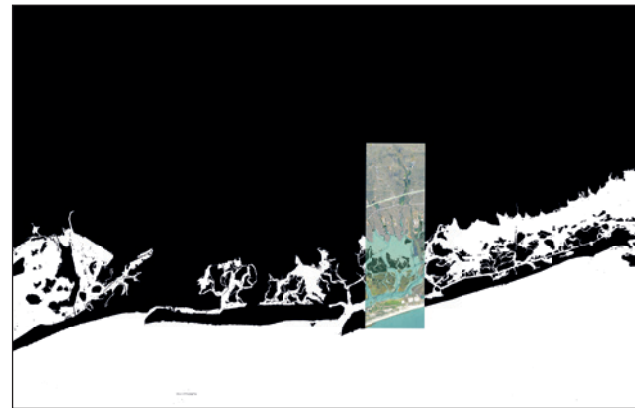
TEAM

/ Vritti Bhamri
/ Aljoharah Turki Althynayan
/ Vidhi Trivedi

The New Recipe reimagines Levittown as a place where fences fall, trust returns, and everyday spaces become shared ground. School lawns turn into welcoming community commons where people gather, learn, and celebrate. Streets become walkable, shaded, and safe, helped by small electric AI pods that make movement easy for kids, seniors, and families.

Backyards, once closed off and isolated, open up to become shared places of life: artist workshops, community gardens, backyard pool decks, and small gathering spaces that bring neighbours together in simple, joyful ways. Through a community land trust, new homes can grow gently in underused spaces using two housing typologies: customizable prefabricated co-living homes, and accessory dwelling units added to existing suburban houses. This approach allows long-time residents to remain in their neighbourhoods while welcoming new families with affordable places to live.

At the coast, a resilient market reconnects people to the water and to one another. Together, these pieces form a new recipe for suburbia open spaces, shared care, and mutual trust creating a neighbourhood where people feel connected, supported, and truly at home with each other.



LEVITTOWN

Video Link



UNFENCED: THE NEW RECIPE

COMMUNITY LAND TRUST GROWTH WITHOUT DISPLACEMENT

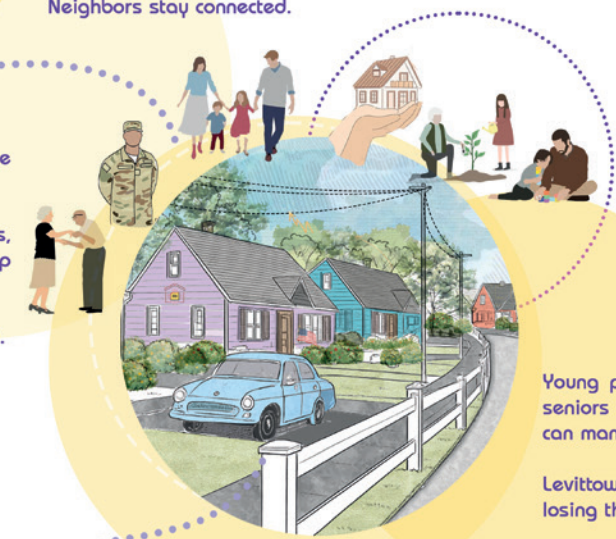
Homes stay affordable.
Neighbors stay connected.



Levittown has always been a place built on possibility.

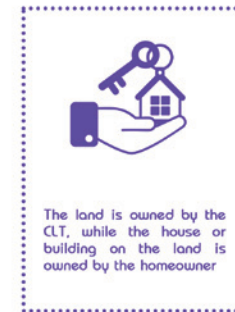
Tree-lined streets, familiar homes, and generations growing up together.

But now housing is harder to afford.

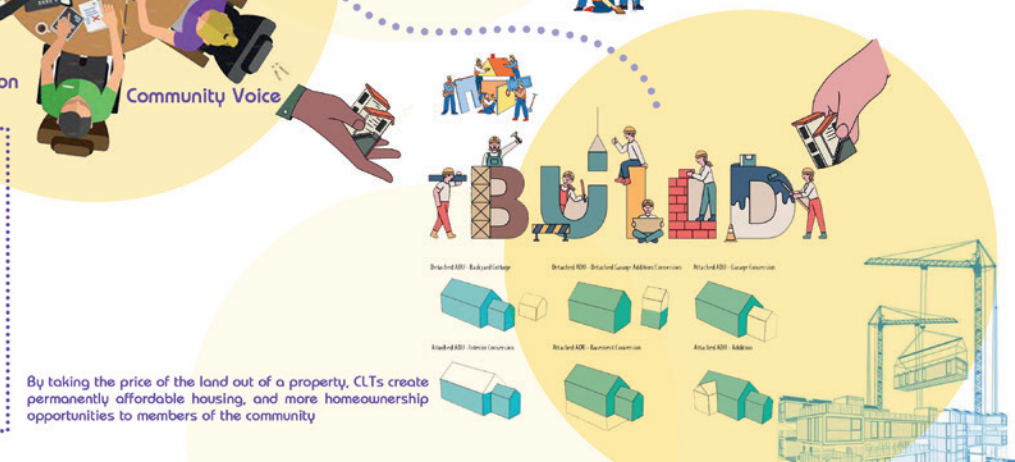


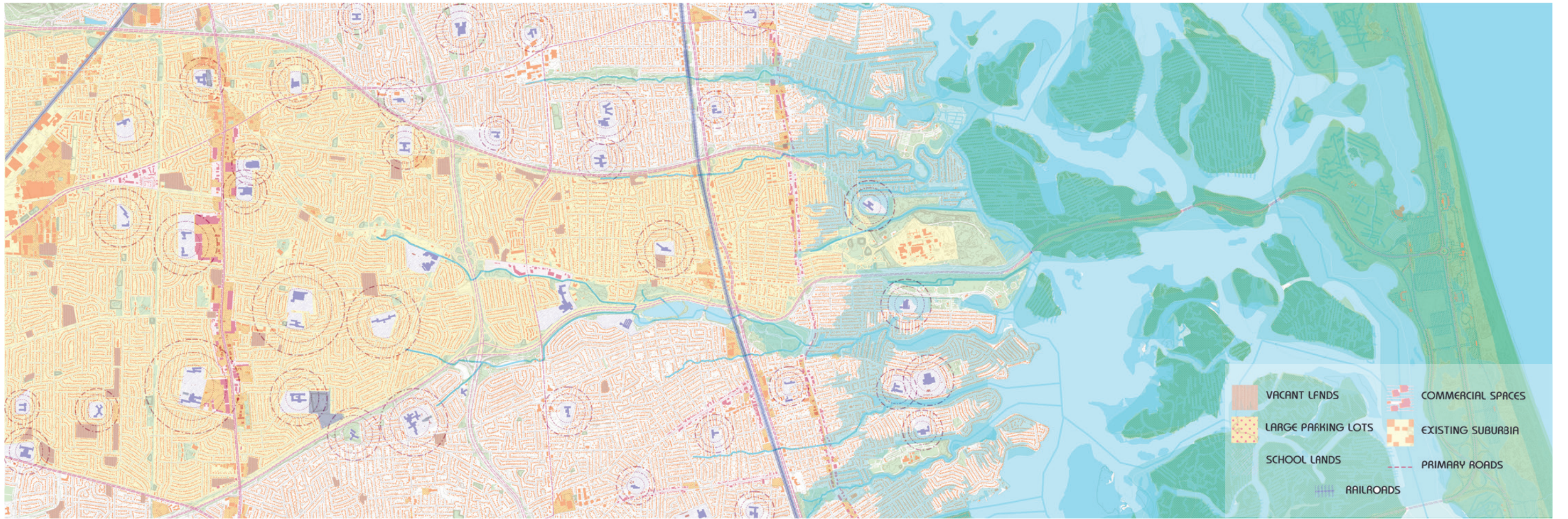
Young people struggle to stay, and seniors have more house than they can manage.

Levittown needs to grow without losing the community it loves.

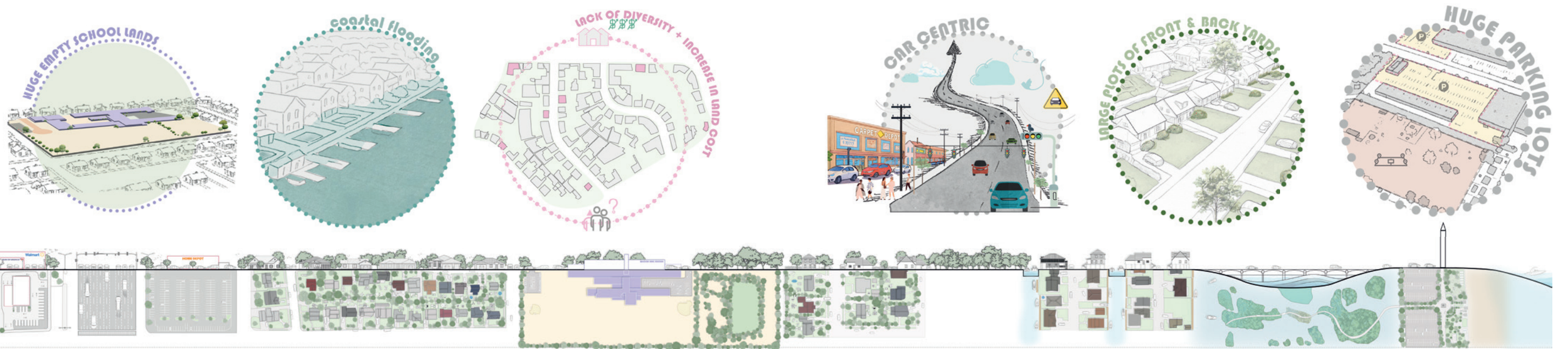


Public Officials
Members of the Community
Housing Experts
Residents Advisors





MASTER PLAN



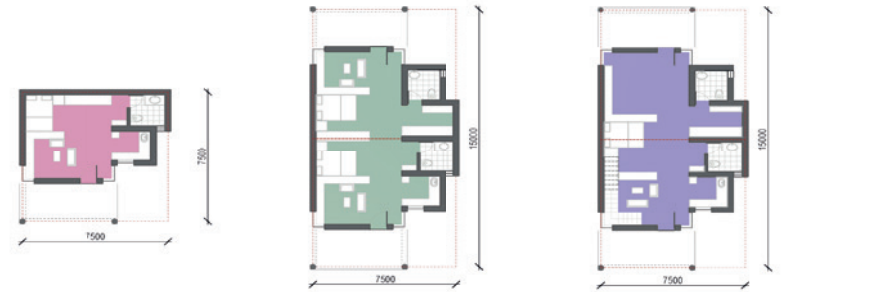
RIJCHSWAAR ALTHANAWAN - VRIJTI - VIDHI



THE 15-MINUTE NEIGHBOURHOOD



RUJOHARRH ALTHUNAYAN - VRIITI - VIDHI



Module 01
(2-3 PAX)

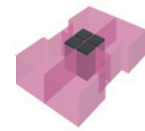
Module 02
(4-6 PAX)

Module 03
(7-9 PAX)

Type A
(4 x Module 01)

Type B
(2 x Module 01) + (Module 02)

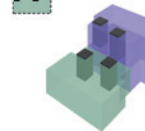
Type C
(2 x Module 01) + (Module 03)



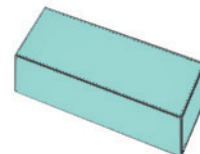
Type D
(2 x Module 02)

Type E
(Module 02) + (Module 03)

Type F
(2 x Module 02)



CO-HOUSING MODULES



Module 01
(XS-S)

Module 02
(M-L)

Module 03
(XL-XXL)



Detached



Attached



Stacked



No Addition



Stacked (Garage)



Retrofitted (Garage)

PRE-FABRICATED ADU



DESIGN STRATEGIES

Living With Water

LEVITTOWN TO BELLMORE, LONG ISLAND

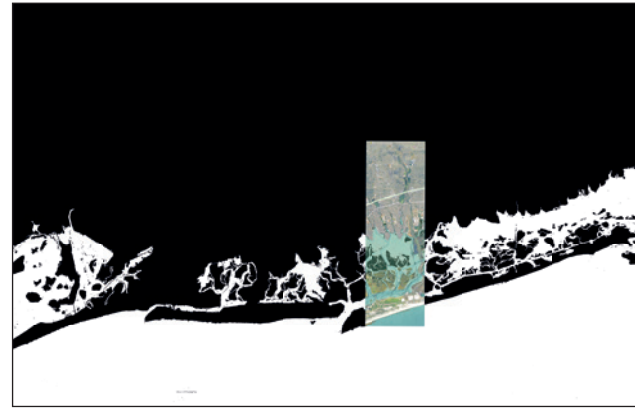
TEAM

/ Zehra Zaheer
 / Giovanna Luz Moreira
 / Tianyi Shi

This project begins with a simple belief: that places shaped with love can shape people who care for each other, for nature, and for the generations that follow. This project is a commitment to care for the land and the water that have cared for us. For decades, the region's streams, marshes, and shorelines carried the memories of the people who lived there children playing near creeks, families sharing meals by the water, elders watching the tides rise and fall. But as development overtook the landscape, these natural rhythms were forgotten.

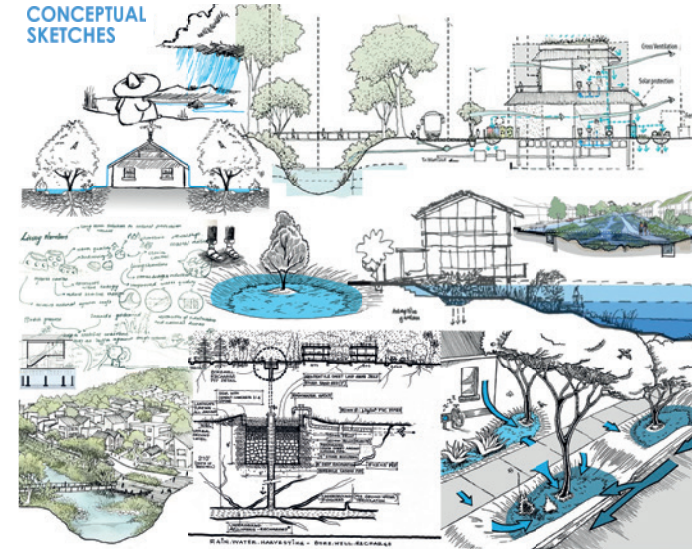
The land grew tired and water had no place to go. Communities slowly drifted apart.

This project is an act of compassion toward that forgotten landscape and an act of love towards the people who call it home. By reviving historic streams and restoring tidal marshes, we are returning care to the land, acknowledging that nature has its own needs, its own stories. We make room for water not out of fear, but out of respect for its memory, its power, and its quiet wisdom.

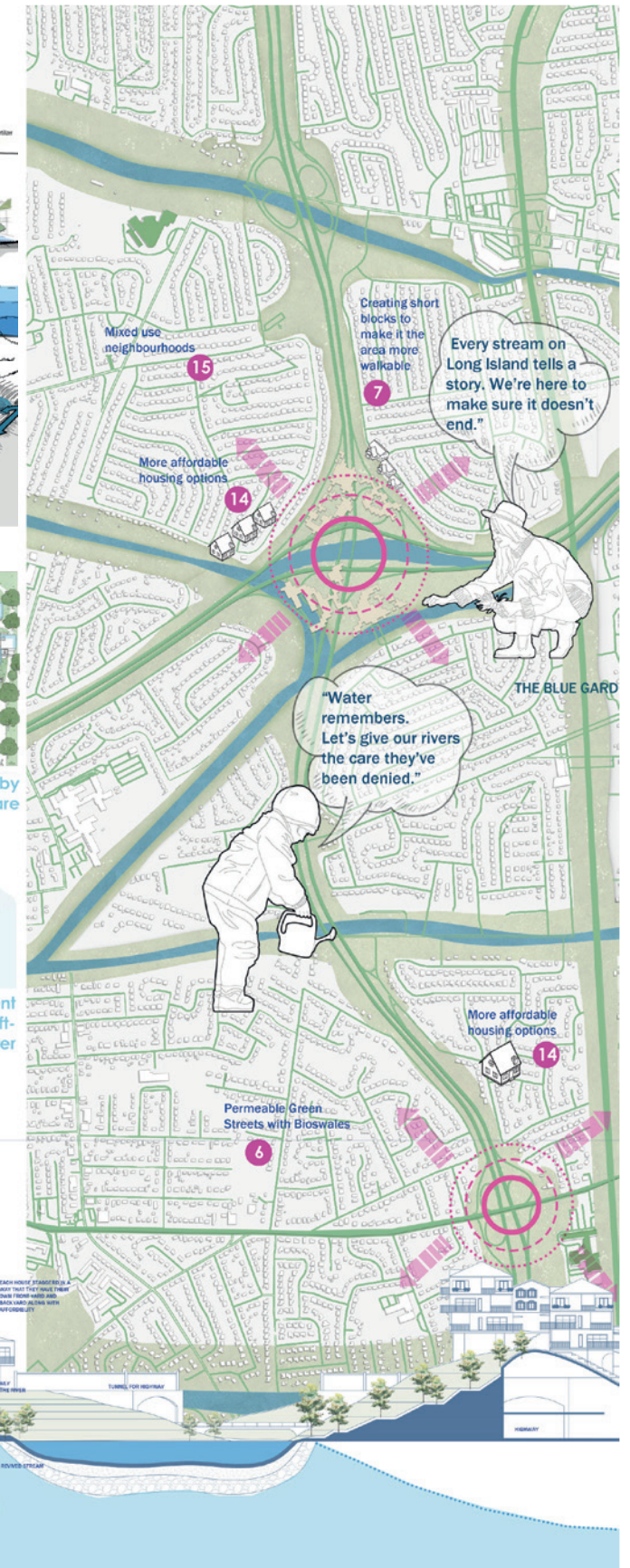
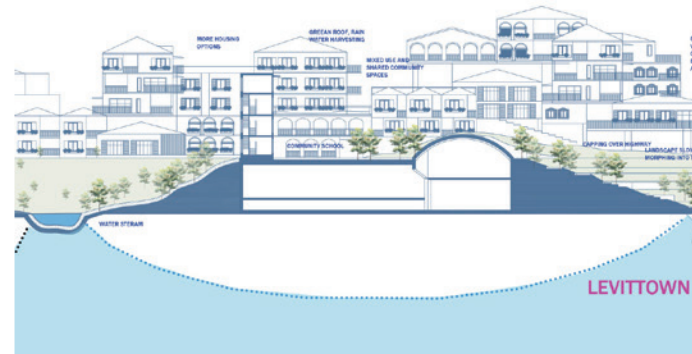
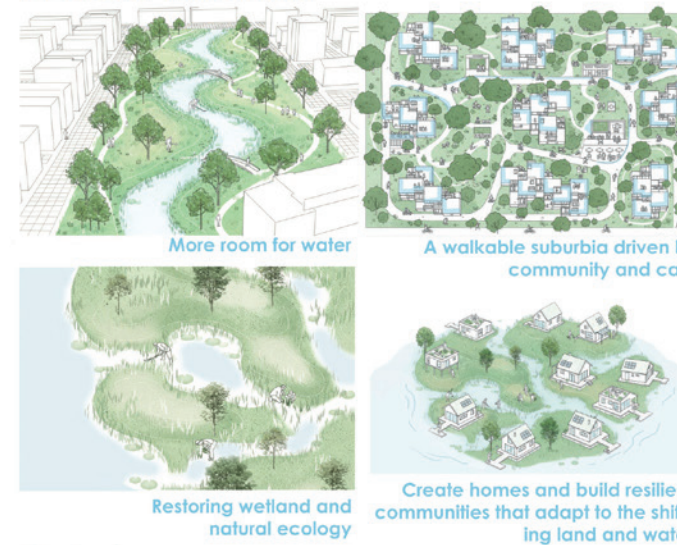


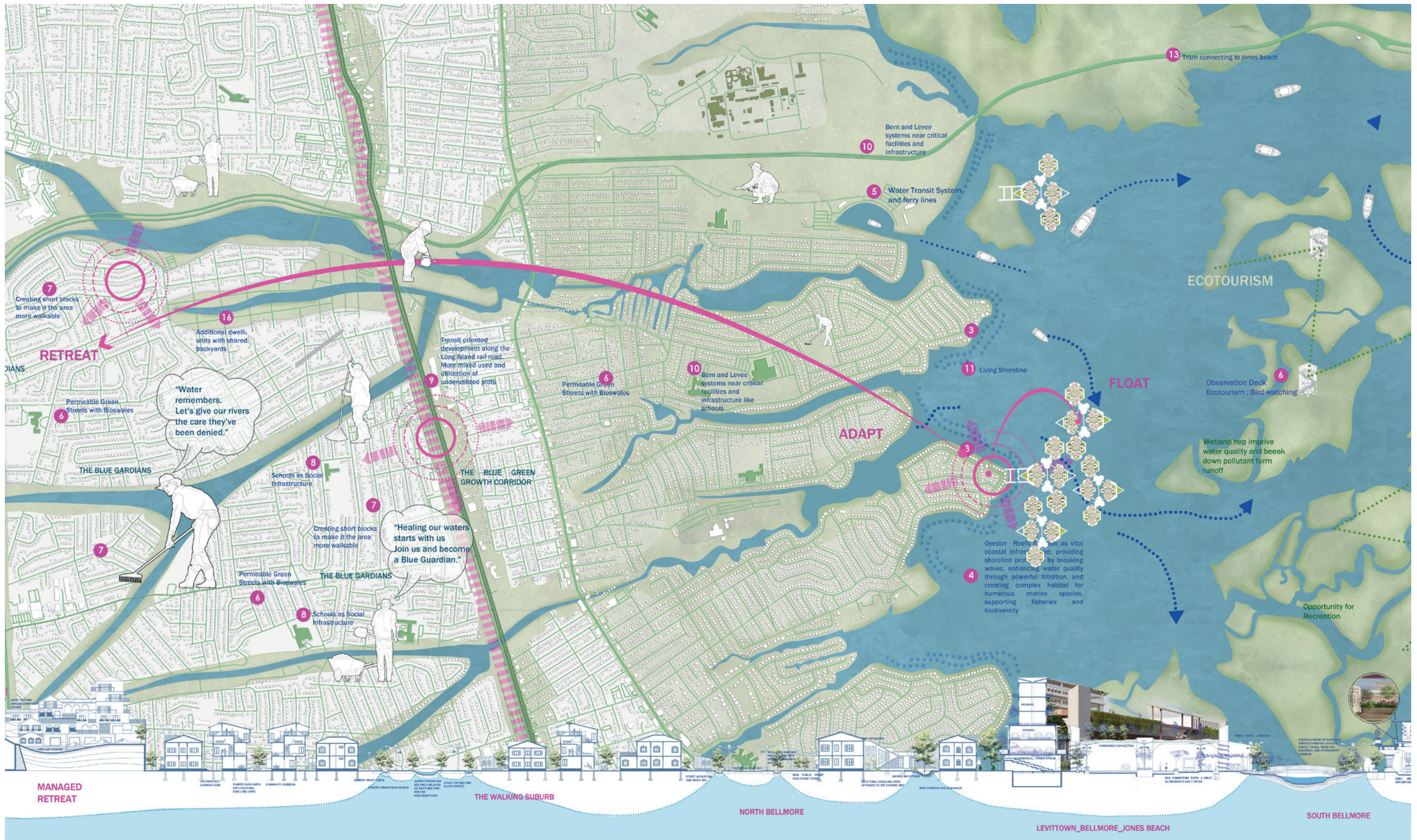
BELLMORE

Video Link



DESIGN PRINCIPLES:







IN THE SHADOW OF RAILS THE WATER REMEMBERS





AN ELEVATED COASTAL NEIGHBORHOOD WHERE RESILIENCE, SHARED COMMUNITY SPACES, AND BOARDWALKS ENABLE EVERYDAY LIFE WITH WATER.



NEIGHBORHOOD SCALE ADDITIONAL DWELLING UNITS WITH BACKYARDS AS SHARED SPACE OF FOOD FRIENDSHIP, AND BELONGING

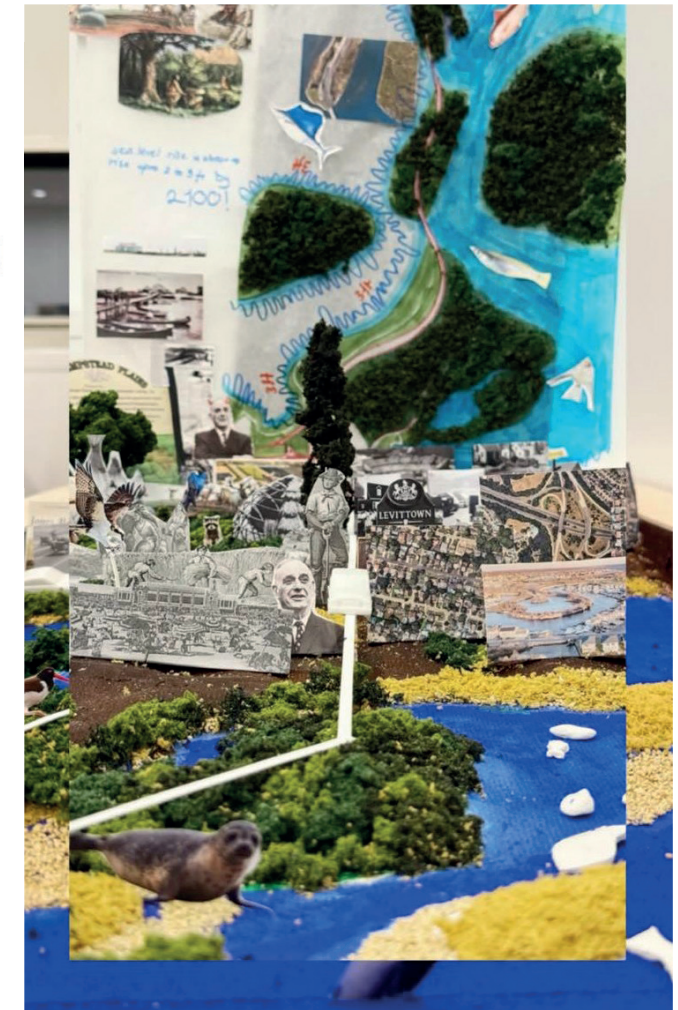
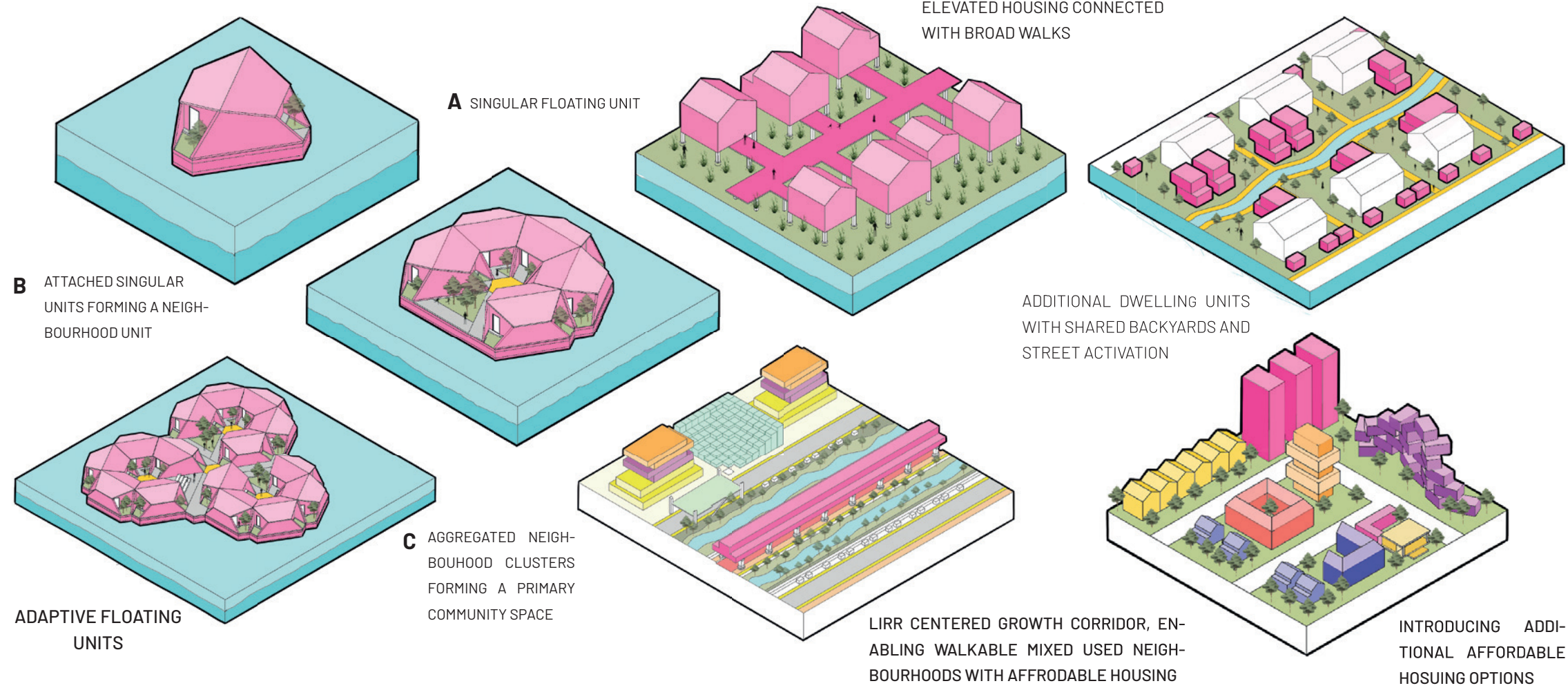


VIEW OF AFFORDABLE HOUSING, REIMAGINING THE HIGHWAY CORRIDOR AS A GREEN, PEOPLE-CENTERED NEIGHBORHOOD WITH SHARED TERRACES AND COMMUNITY SPACES SUPPORTING EVERYDAY LIFE, BLOCK PARTIES, AND COLLECTIVE JOY.



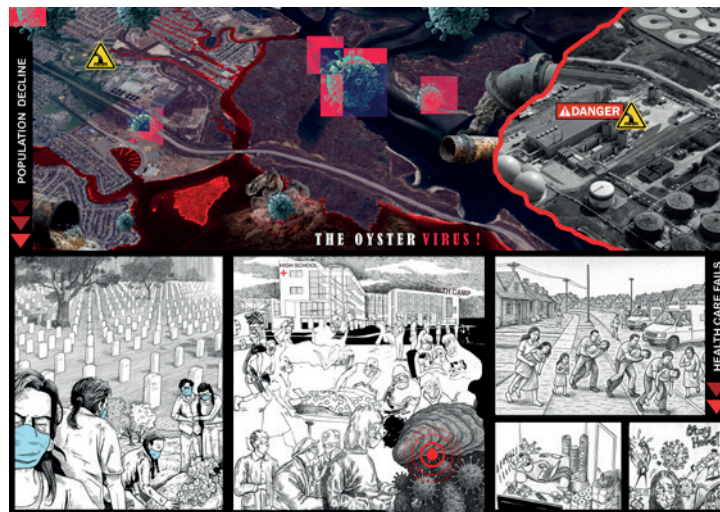
"SOMETHING THERE IS THAT DOESN'T LOVE A LOVE", A NEW SURBIA WHERE NATURE DISSOLVES THOSE RIGID WALLS BETWEEN NEIGHBOURS.

RESILIENT ADAPTIVE STRATEGIES FROM THE BAY TO UPLAND



MODEL

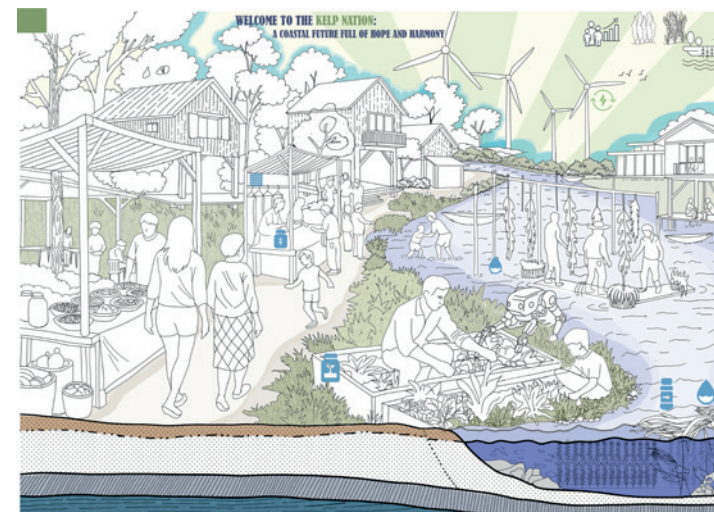
FUTURE SCENARIOS



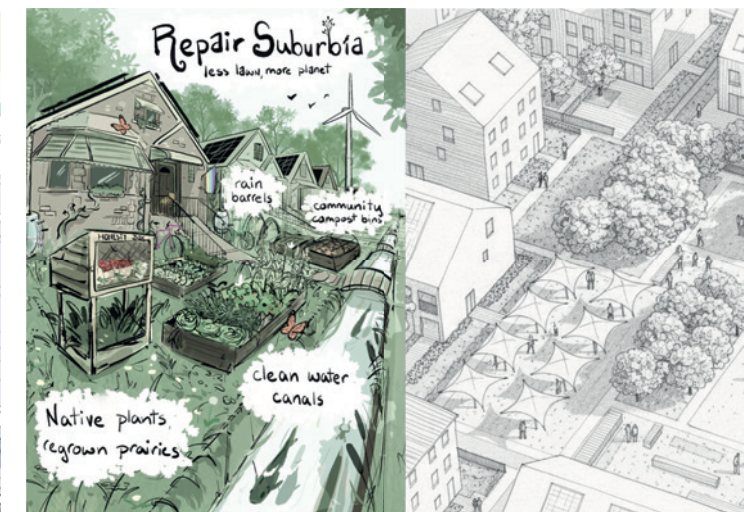
THE SPREAD OF OYESTERVIRUS (WATER CONTAMINATION +PUBLIC HEALTH)



RISING SEAS: WATER SUBURBIA RISES FROM THE WATER LIKE A RESILIENT ARCHIPELAGO



THE KELP NATION (RESILIENT COASTLINE+EDUCATION)



A RENEWED SUBURBIA, LIBERATED FROM CARS AND RECLAIMED BY NATURE

Long(er) Beach:

An Energy Resilient Sandscape

LONG BEACH TO ROCKVILLE CENTER, LONG ISLAND

TEAM

- / Aishwarya Warad
- / Xiaonan Li
- / Zhouhang Yu
- / Dzormo Naa Cofie

Situated on the South Shore of Nassau County, New York, the region spanning Long Beach, Island Park, Oceanside, and Rockville Centre comprises coastal and inland settlements along the western edge of the New York Bight. In a moment shaped by the housing crisis, climate change, and growing economic displacement, the project aims to strengthen community resilience through coastal infrastructure that supports both ecological and social stability.

A proposed boardwalk along the transect reinforces connectivity; it acts as a platform for equity and becomes a shared identity rooted in culture and coastal ecology. At Long Beach, the boardwalk extends into the ocean, forming a tidal lagoon that supports marine life by transforming sea walls into reefs and reduces reliance on the E.F. Barrett power plant. Collectively, these interventions form an adaptive framework for housing resilience and climate readiness.



LONG BEACH

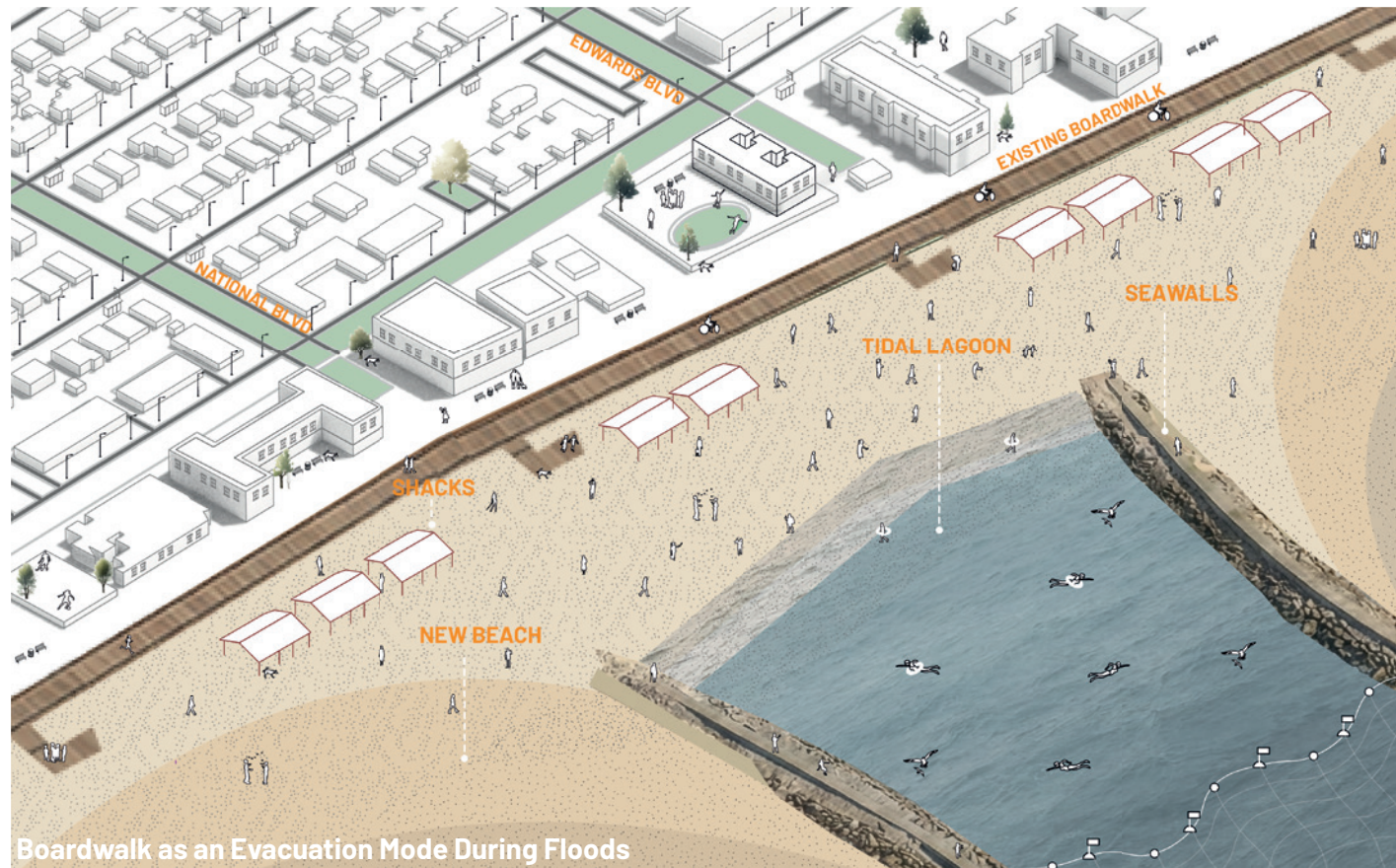
Video Link



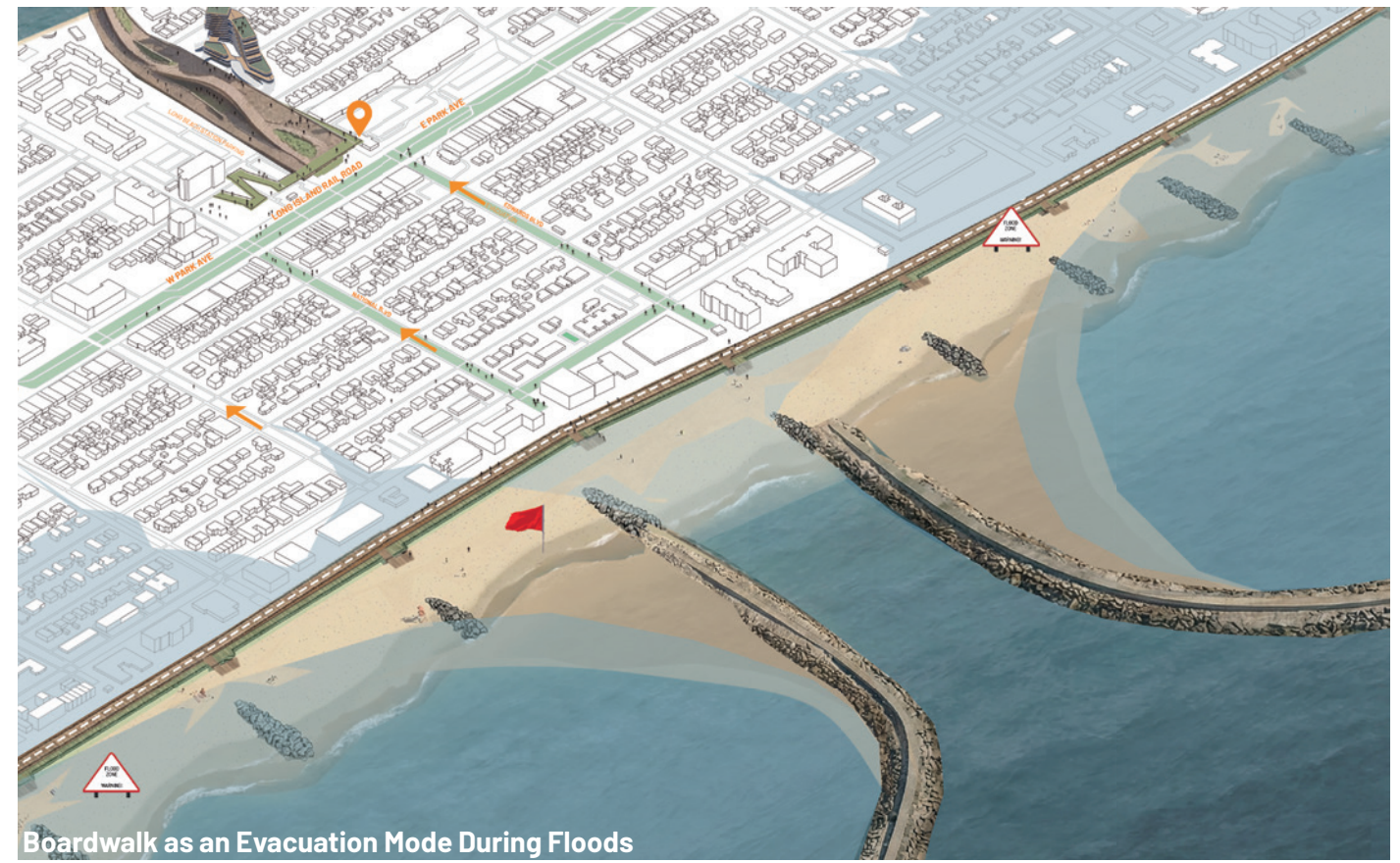
Rockville Center acting as Emergency Response Center Post-Disasters



Proposed Beach at Island Park as a Community Resilience Feature



Boardwalk as an Evacuation Mode During Floods



Boardwalk as an Evacuation Mode During Floods







Marshkeeperland

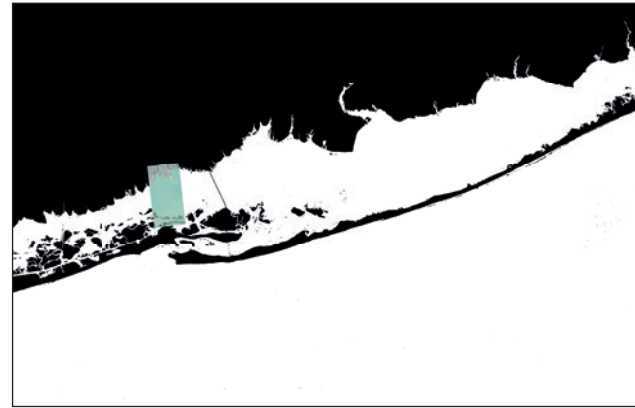
BABYLON, LONG ISLAND

TEAM

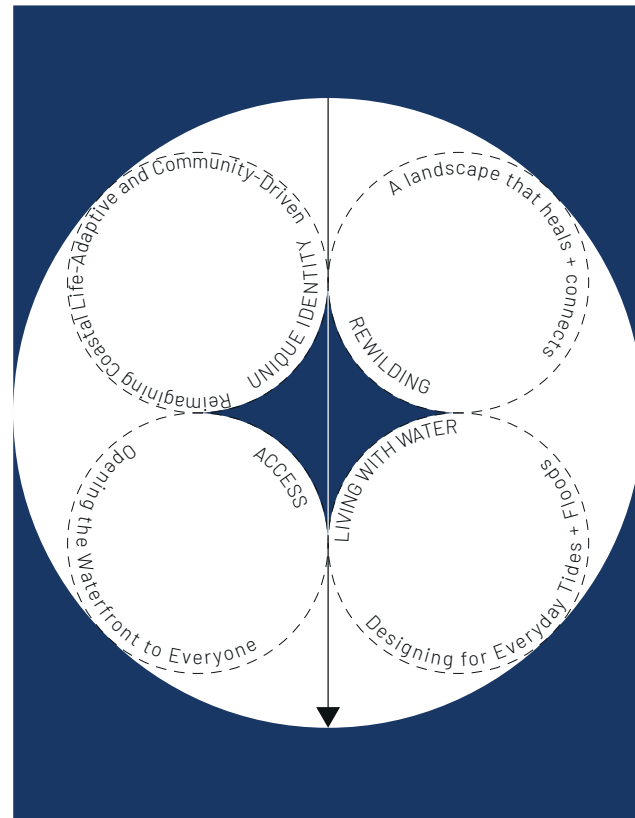
- / Daniela Monroy Zendejas
- / Samantha Nowak
- / Mason Rape
- / Miguel Ángel Santivañez López

MarshkeeperLand reimagines the coastal landscape from Babylon to Robert Moses State Park through the historic marsh habitats that once shaped Long Island's edge.

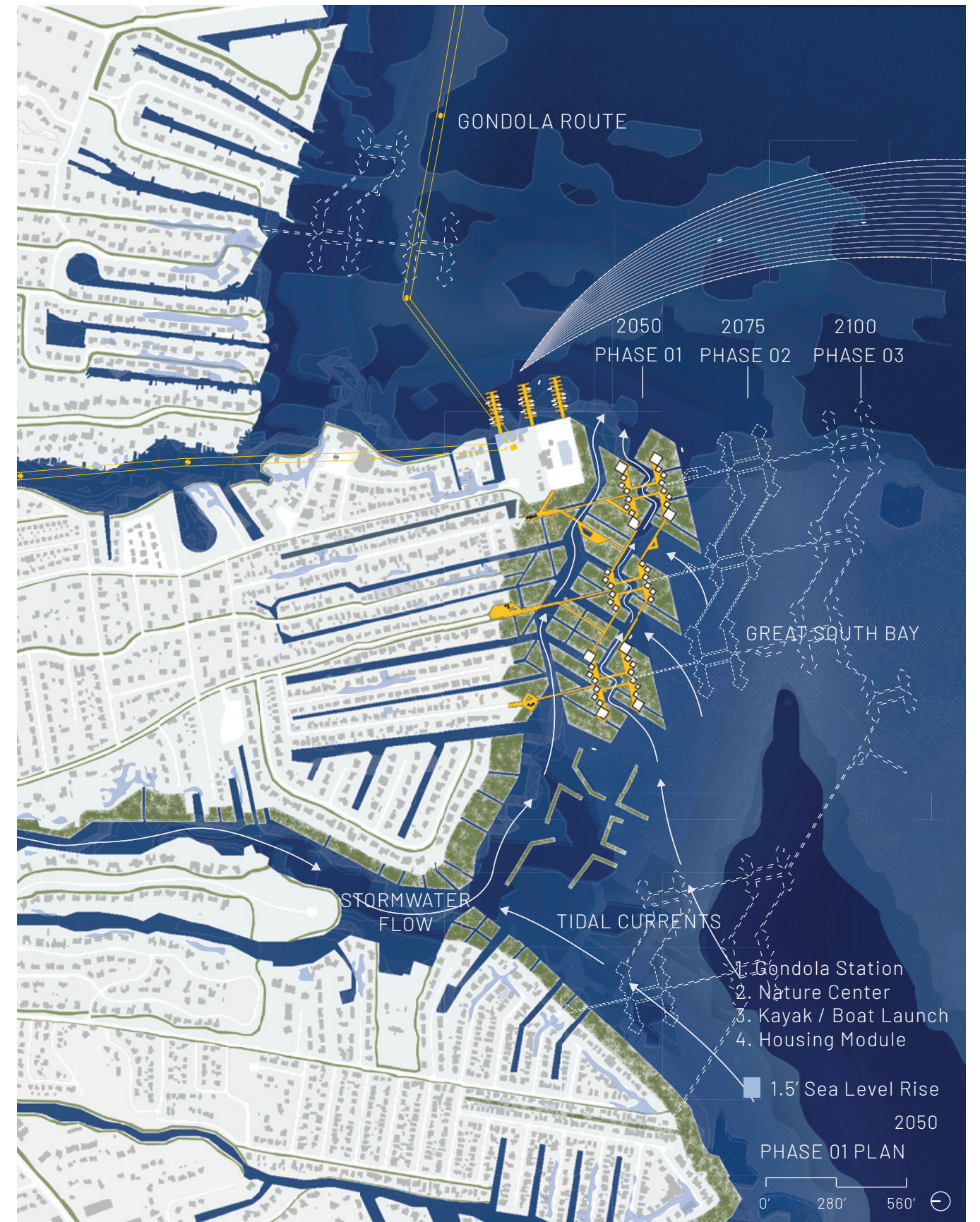
The project envisions inclusionary coastal landscapes where access to water, opportunities for environmental stewardship, and a renewed sense of community identity come together. Understanding the marsh as both social and resilient infrastructure, the design creates spaces that bring people together while restoring natural systems that filter stormwater and reduce coastal flood risks. Guided by the principles of access, rewilding, living with water, and cultivating a unique identity, the proposal weaves tidal paths and adaptive habitats into a unified coastal fabric.



BABYLON

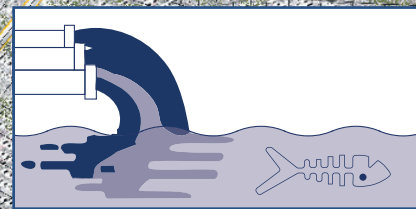


Video Link





CAR DEPENDENCY



STORMWATER POLLUTION

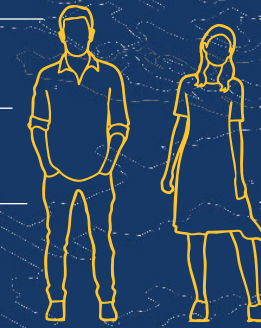


RISING SEA LEVELS

Environmental Stewardship

Communal Living

A Unique Sense of Identity

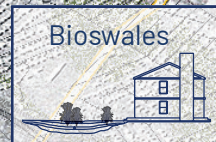


MARSHKEEPER VALUES

Gained Marsh Expertise

Economic Opportunity

Building Relationships



Bioswales



Native Backyards



Marsh Planting



Ecological Corridor



Marsh Reseeding



Dune Recovery

LIRR

BABYLON

WEST ISLIP

R.M. CAUSEWAY

GREAT SOUTH BAY

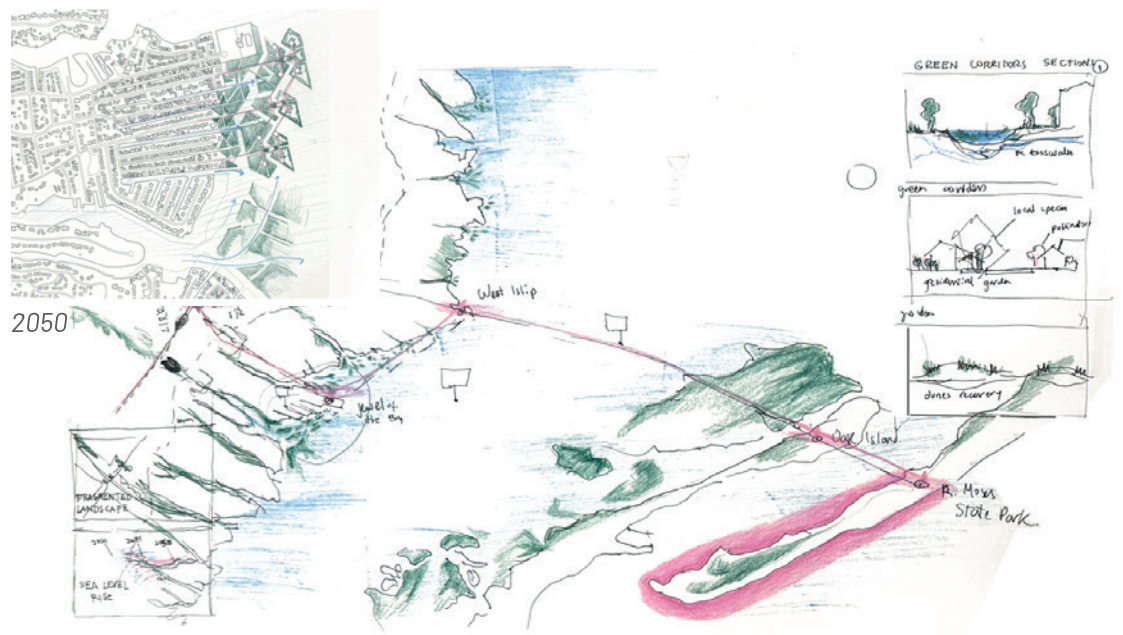
OAK ISLAND

CAPTREE ISLAND

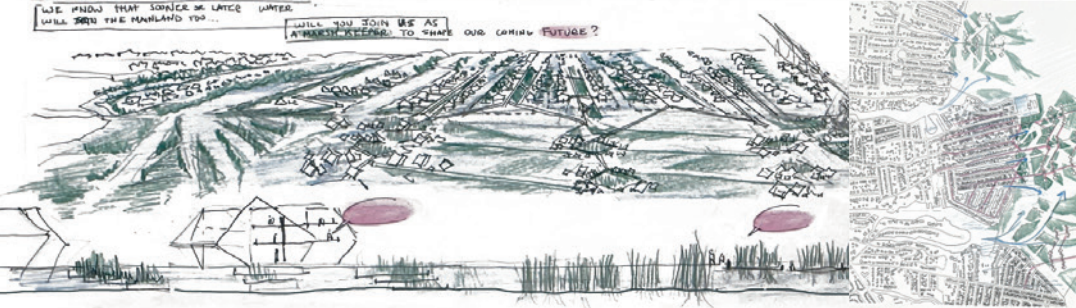
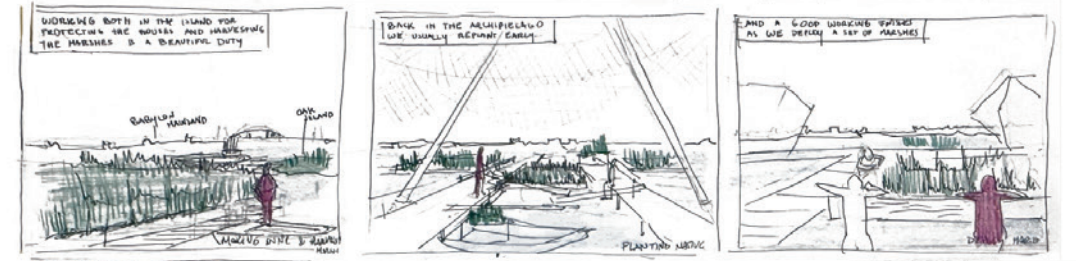
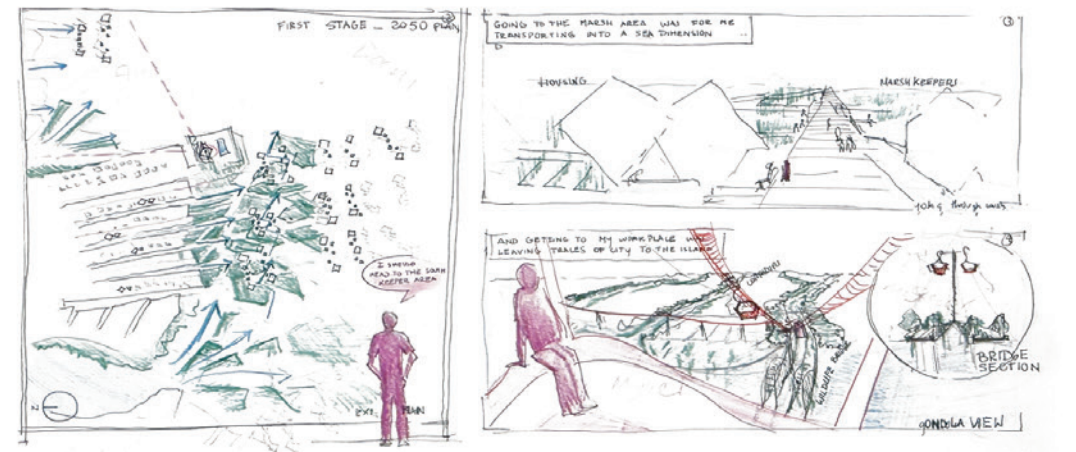
OAK BEACH

R.M. STATE PARK

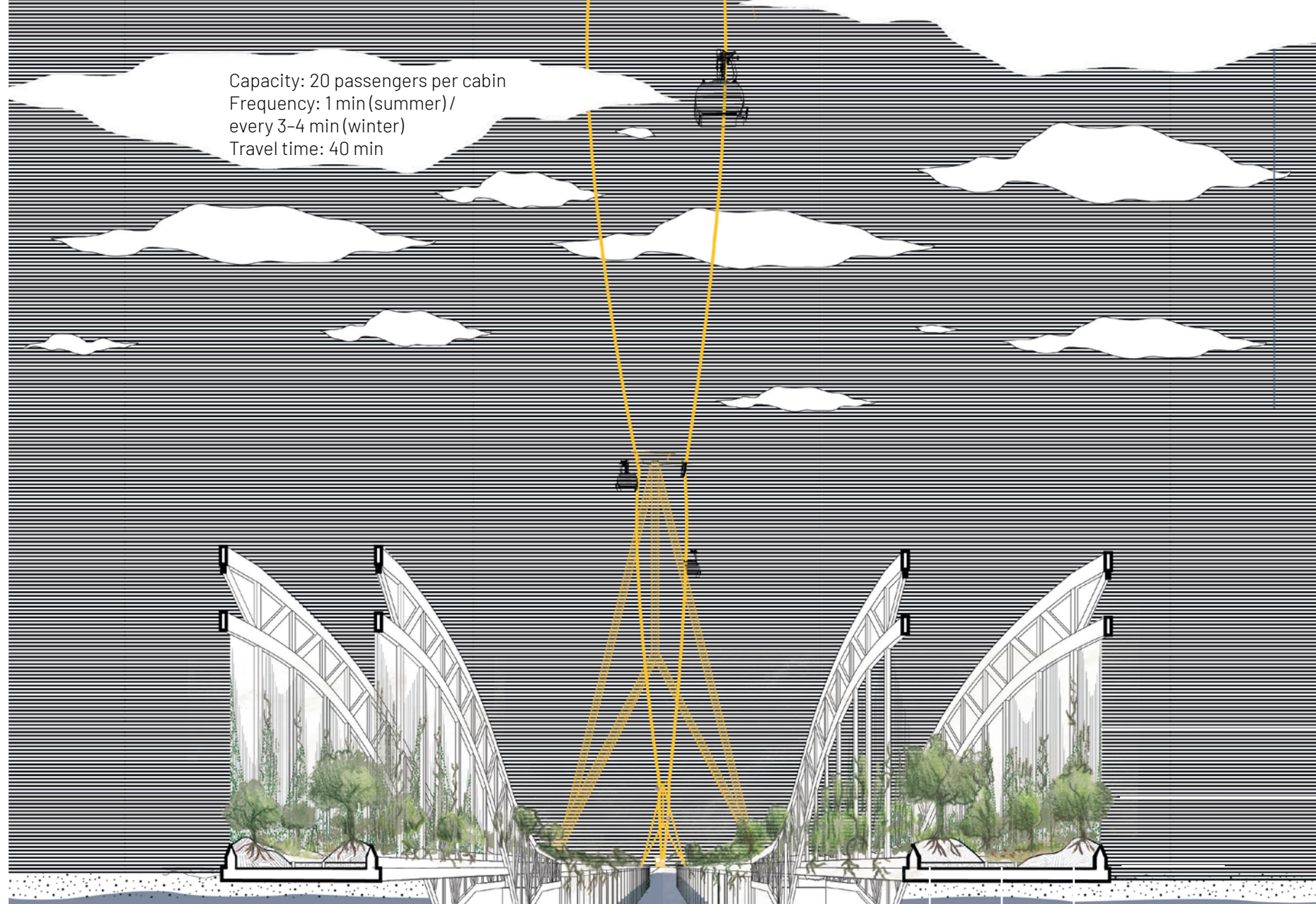
GILGO STATE PARK



2050



Capacity: 20 passengers per cabin
 Frequency: 1 min (summer) /
 every 3-4 min (winter)
 Travel time: 40 min

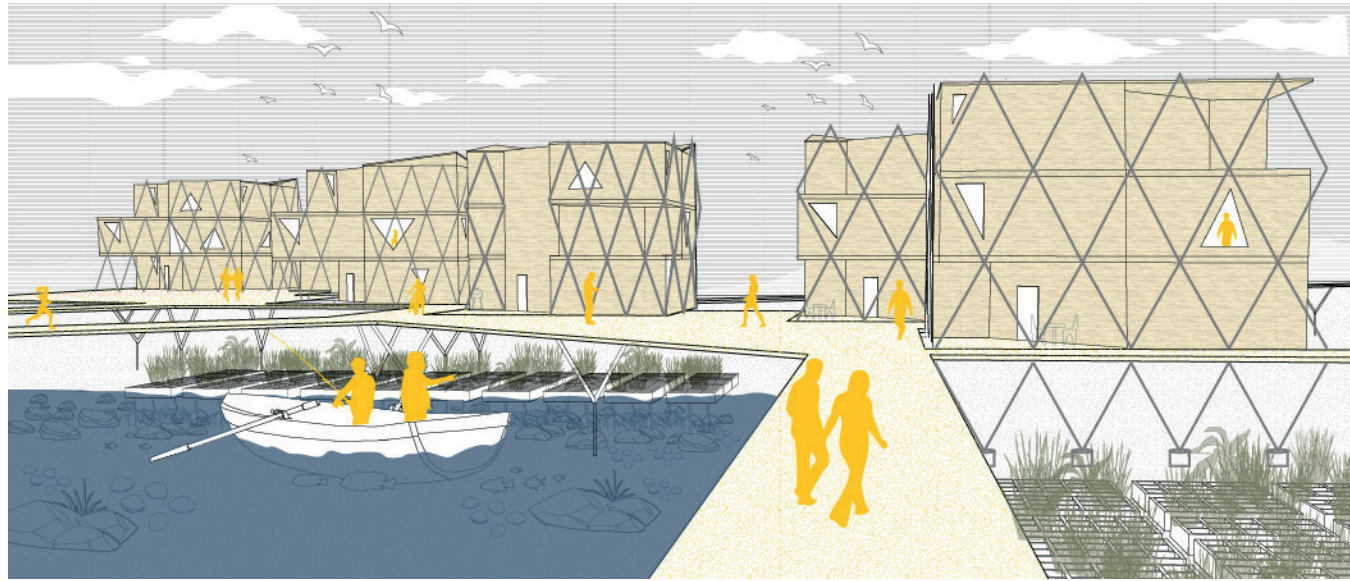


- 5.0 ft level rise
- 3.0 ft level rise
- 1.5 ft level rise

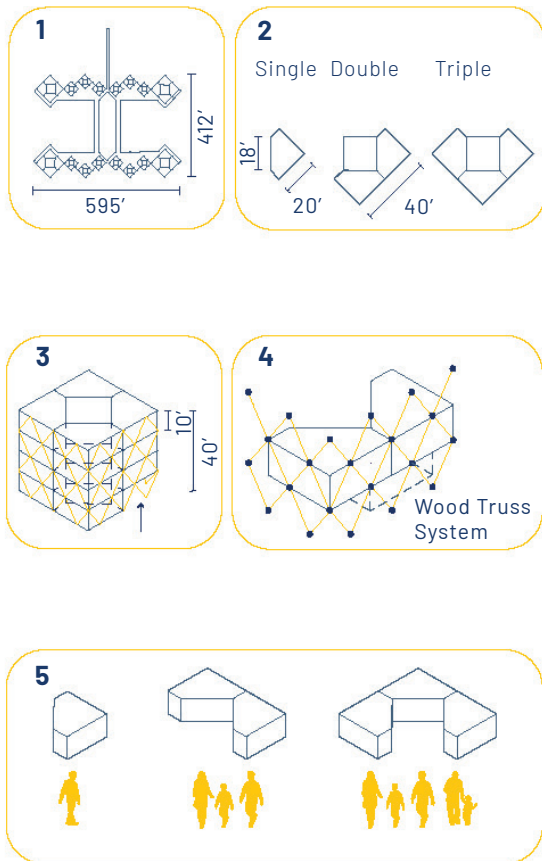
mesh systems
 artificial landscapes
 pedestrian platform

- 2100 • Full rewildeness
- 2075 • Shaped topography with native species
- 2050 • Platform removal & ground conversion

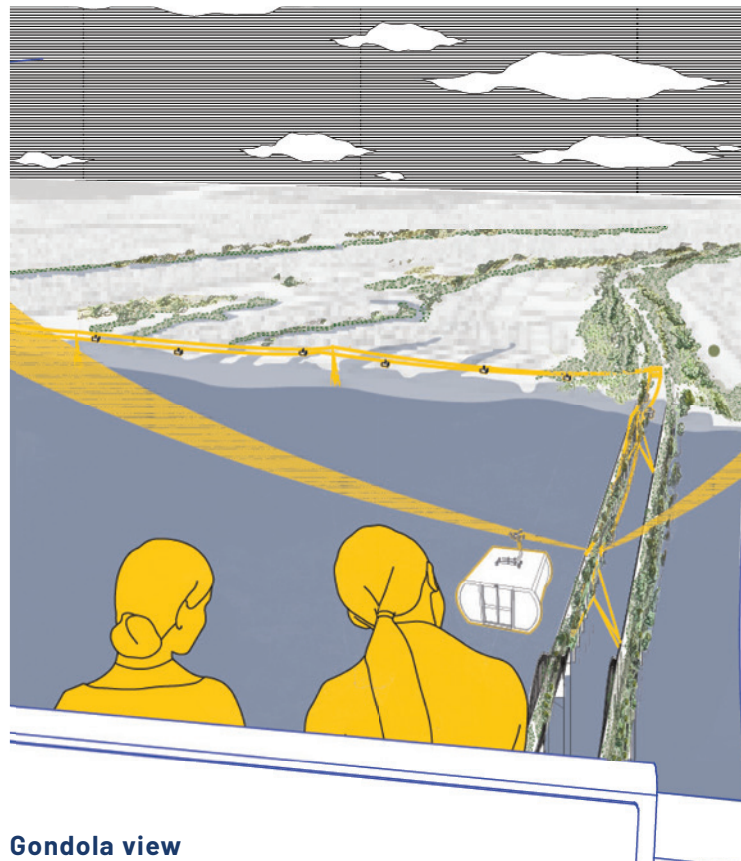




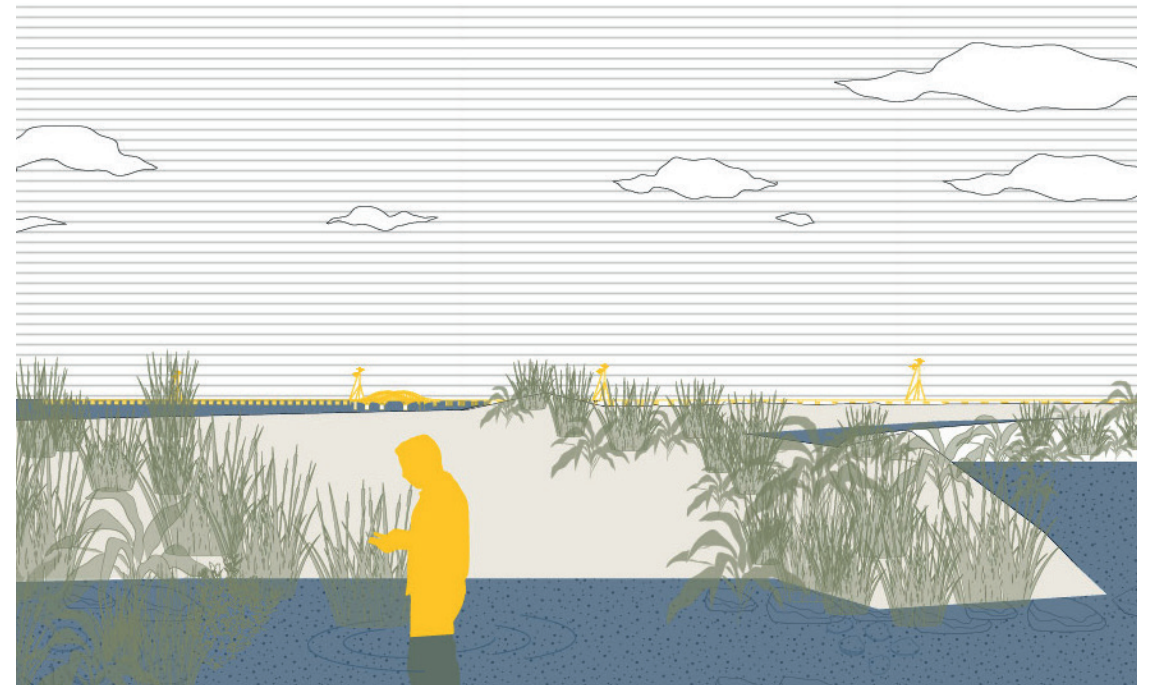
Marshkeeper housing



SALTpod HOUSING



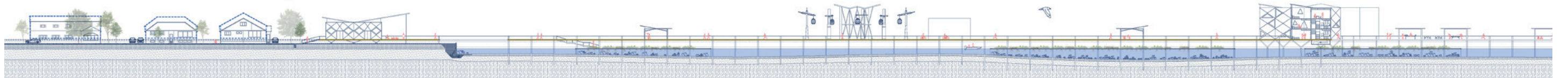
Gondola view



Marsh implementation - healthy marsh seeds are reseeded



Marsh implementation - modular marsh nursery prepare plants to be rooted and self sustain





NATURALLY-GROWING
MARSH

TIDAL CURRENTS

LET'S GROW WITH THE MARSH!

The First Ridge

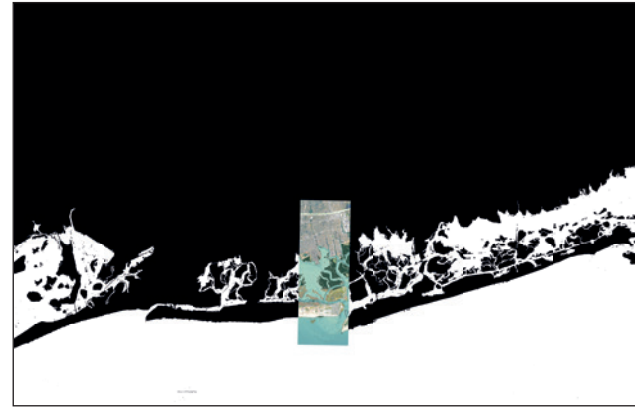
ROCKVILLE CENTRE - BABYLON LONG ISLAND

TEAM

- / Yiting Li
- / Haoyang Chang
- / Ting Chu
- / Sunghwan Park

Across much of the United States, suburban development has produced fragmented landscapes, discontinuous mobility networks, and housing patterns increasingly misaligned with emerging climate realities. Along the Long Island Rail Road corridor from Rockville Centre to Babylon, our regional analysis reveals a critical convergence: large portions of existing neighborhoods lie within future flood hazard zones, placing significant housing stock and the communities that depend on them at long-term risk.

By examining the interplay between connectivity, mobility, land use, and coastal vulnerability, we developed a comprehensive framework for resilient and equitable adaptation at the metropolitan scale. Within this regional framework, Freeport stands out as an epicenter where transit accessibility, flood vulnerability, and development pressure intersect most sharply, making it an ideal pilot site to test and refine long-term adaptation strategies.



LIRR

Video Link



THE FIRST RIDGE - Freeport as the Pioneer Site

Haoyang Chang, Ting Chu, Sunghwan Park, Yiting Li

0 0.25 0.5 MILES

2030

FOUNDATION

2040

CONSOLIDATION

2100

COMPLETION

PIONEER DEVELOPMENT

ORCHARDS & LOCAL FARMLANDS

DESALINATION PLANT & SALT PAN

FREEPORT BAY CONSOLIDATED MARINA

1500 SQ FT UNIT

GONDOLA STATION

COMMERCIAL

AUTOMATED PARKING

RESIDENTIAL

COMMON LOUNGE

MULTI-FUNCTIONAL MOBILITY SPINE
(Express/Local Rail/Cargo Belt)

PARKING & STORAGE

DEVELOPED SUNRISE HWAY

MIXED-USE BUILDINGS

MERRICK

FIRST PIONEER DEVELOPMENT

CULTURAL PRESEVATION ZONE



DEVELOPED MOUNTAIN COORIDOR

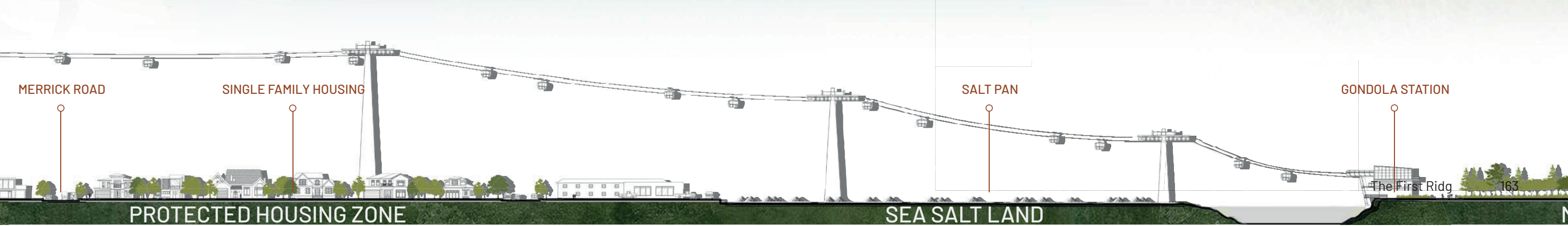
The corridor transforms the LIRR into a terraced, high-density spine that concentrates housing, mobility, and public services on higher, safer ground. By lifting daily life above flood risk, the corridor replaces underused surface parking with a vertical, walkable, transit-oriented neighborhood.

CULTURAL PRESEVATION ZONE

The zone protects the historic character, social identity, and everyday rhythms of existing communities while integrating them into the new corridor. Instead of erasing local fabric, the strategy strengthens main streets, supports existing small businesses, and preserves civic landmarks.

RESTORED COASTAL MARSHLAND

The marshland creates a continuous ecological buffer along the South Shore, allowing tidal wetlands to expand and absorb storm surges. These revived marsh systems reduce flood energy, improve water quality, and bring back critical habitat. By pulling development inland, the coastline becomes a living landscape of protection and biodiversity.





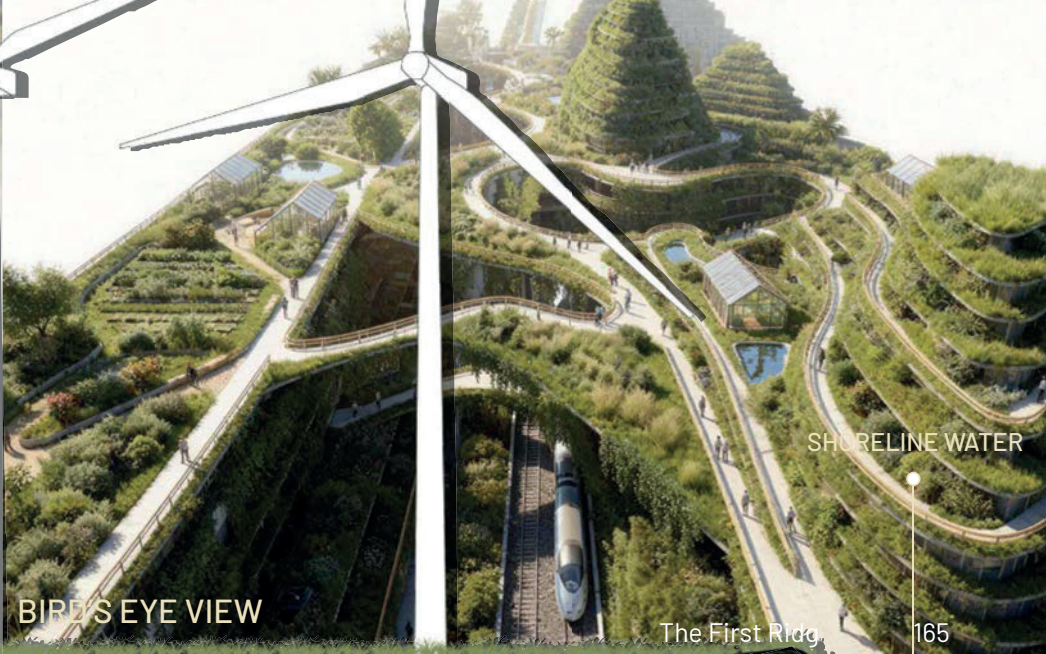
MARSHLAND PARK



VIEW FROM BALCONY



WIND TURBINES



SHORELINE WATER

BIRD'S EYE VIEW

GONDOLA STATION

NATURAL HABITAT

MARSHLAND PARK

COASTAL ENERGY FIELD

Neighborhood Oriented Sewered Housing Integrated Town

Ronkonkoma, Long Island

TEAM

/ Rebecca Koh
/ Romina Quinn
/ Xinyue Wang
/ Yung-Hsiang Yang

Suffolk County faces a growing water crisis caused by nitrogen pollution in the aquifer that supplies all of its water. Our proposal tackles these issues by creating decentralized, walkable, denser node towns, each built around its own wastewater treatment hub. These nodes curb sprawl, restore groundwater recharge, and provide mixed-use, pedestrian-friendly communities that support both aging residents and new arrivals.



RONKONKOMA

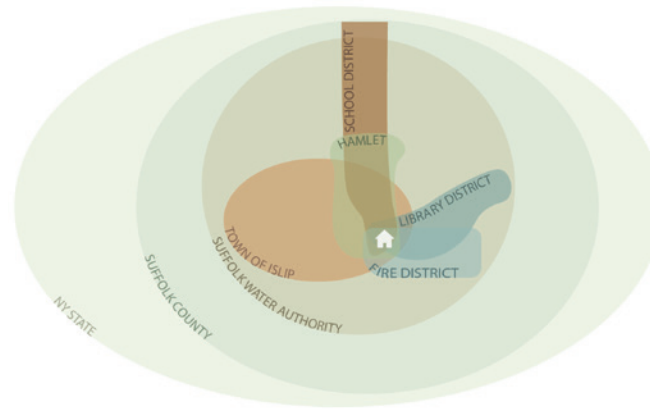
Video Link



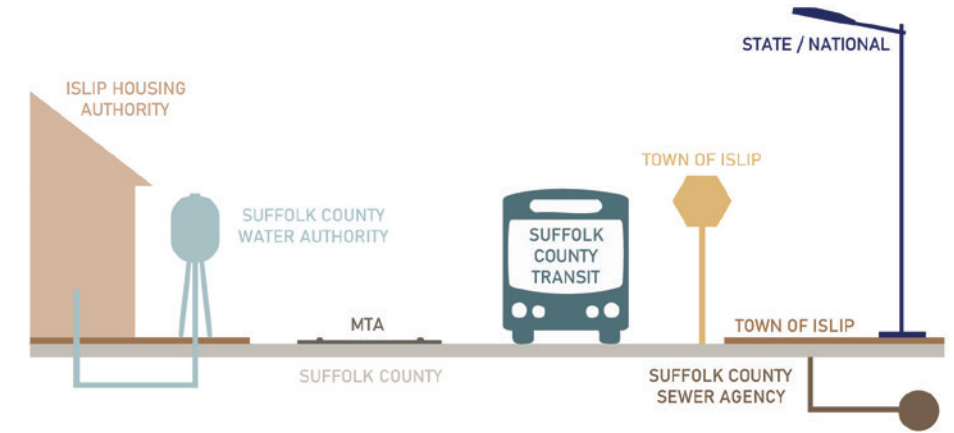
- Sewer Districts
- LIRR Lines
- Coastal Flood Zone



CONTEXT MAP

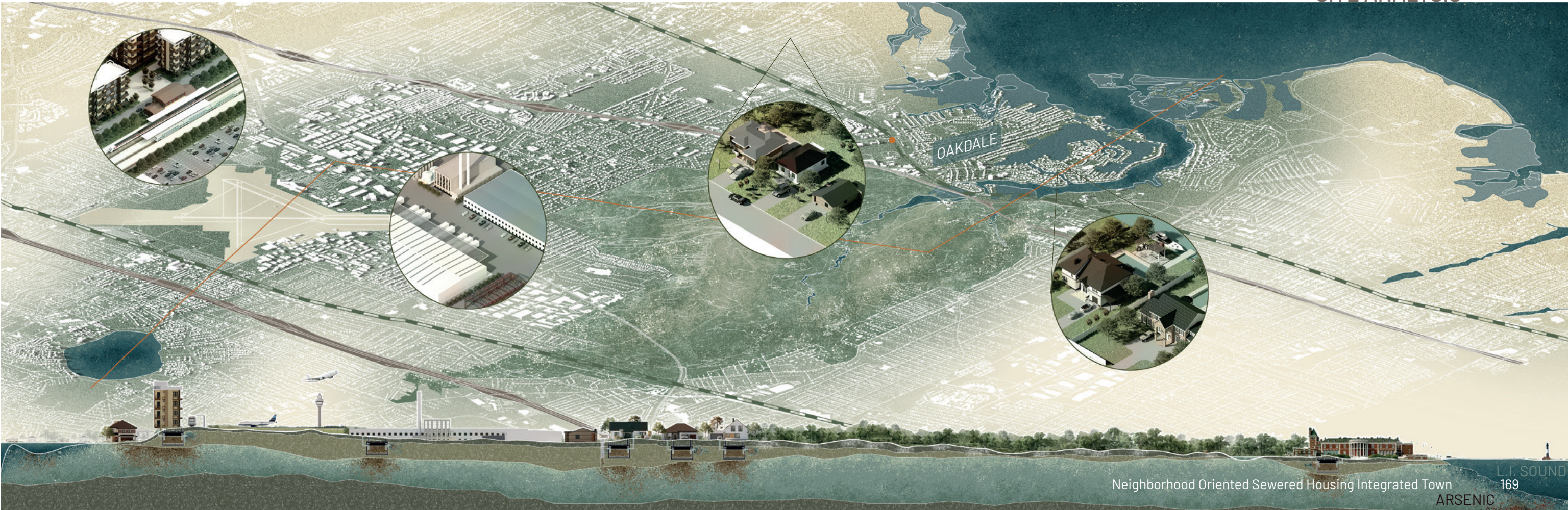


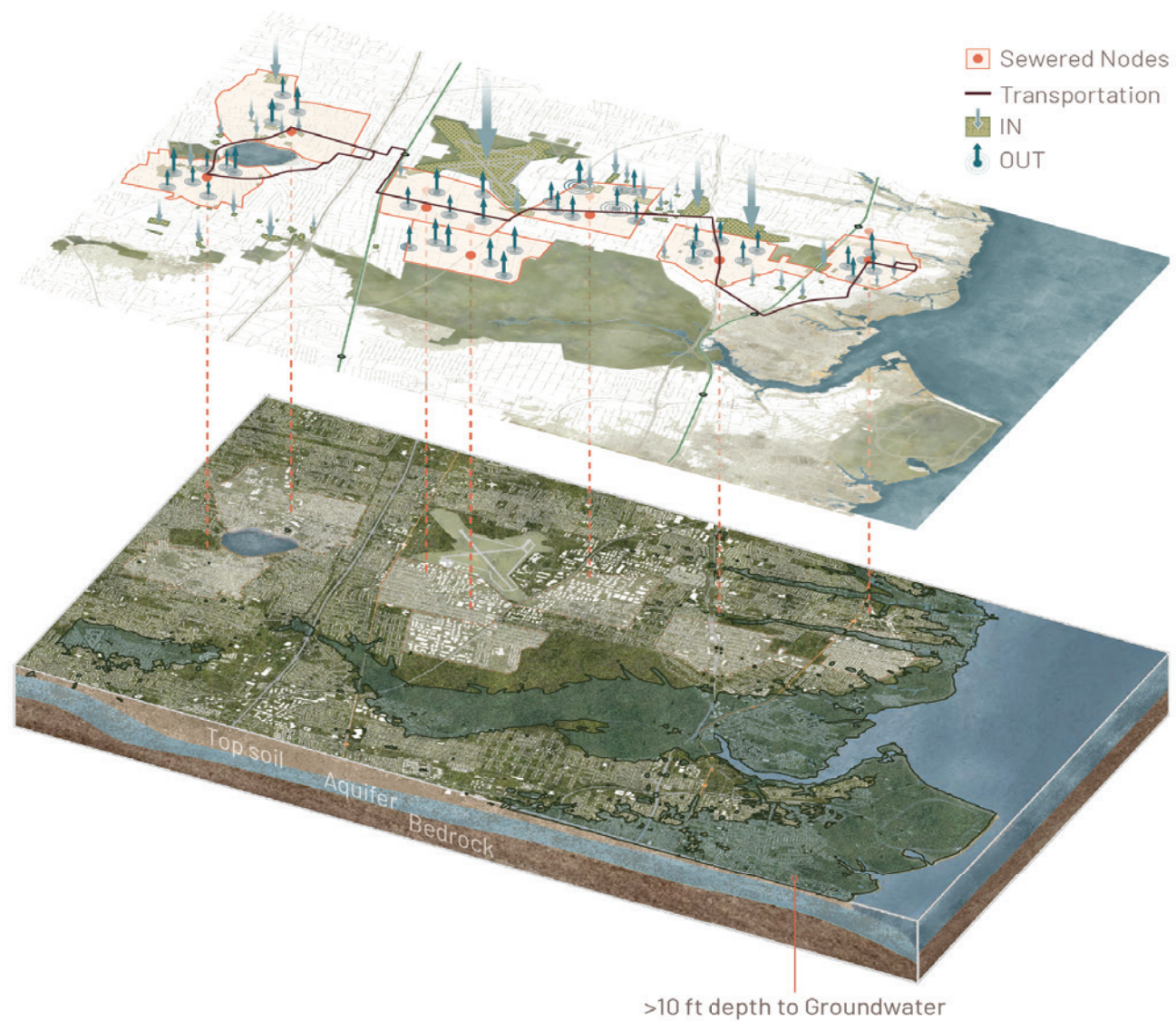
SCALES OF GOVERNANCE



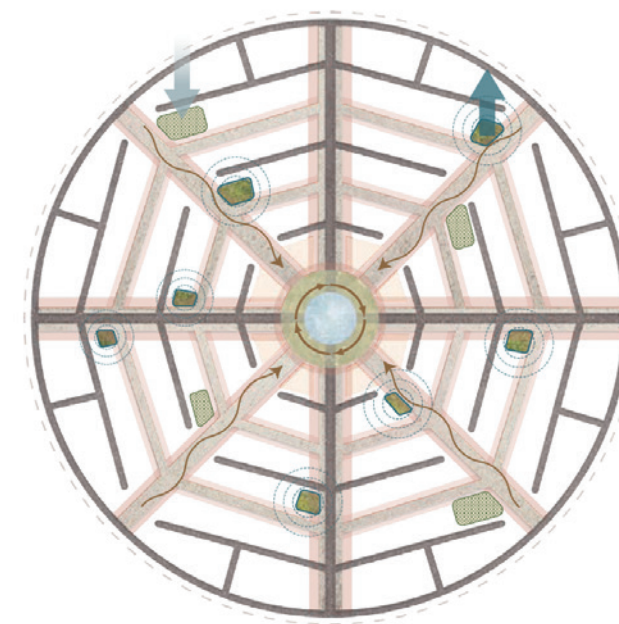
GOVERNING AUTHORITIES

SITE ANALYSIS

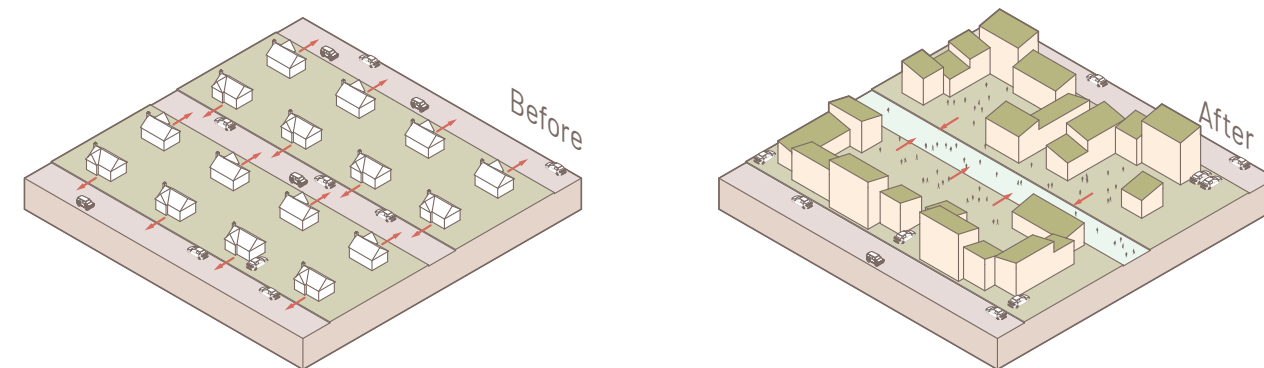




TRANSECT PLAN



NEIGHBORHOOD CONCEPT DIAGRAM



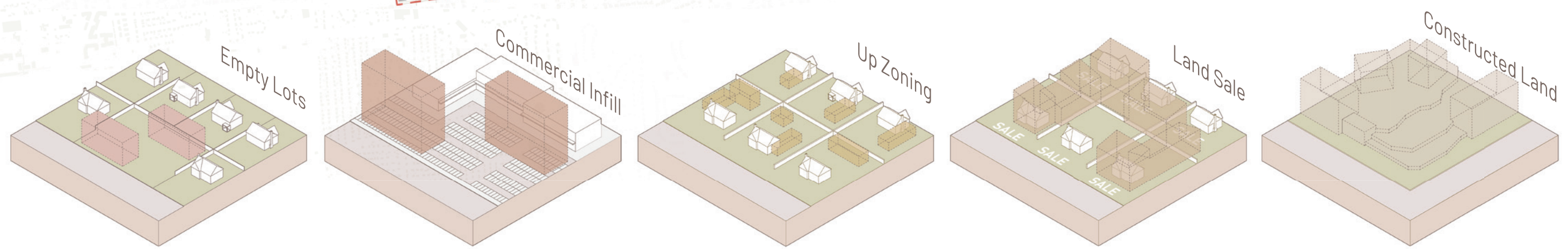
PEDESTRIANIZATION STRATEGY

NODE PLAN



1:7500

- Conserved Existing Buildings**
 - Schools
 - Cultural Centers
 - Fields / Green Space
- Water Repair Interventions**
 - Sewershed Boundary
 - IN - Restored Sumps
 - OUT - Groundwater Filtration
- Street Hierarchy**
 - Pedestrian Oriented Street
 - Converted Pedestrian Access
 - Car Road
 - New Car Roads
- Buildings**
 - P1 - Empty Lots
 - P2 - Commercial Infill
 - P3 - Post Zoning Adjustment Infill
 - P4 - Opportunity for Remodelling
 - P5 - Newbuild on Landscape



OPPORTUNITIES FOR DENSIFICATION



SEWAGE PARK



GROUNDWATER FILTRATION POCKET PARK



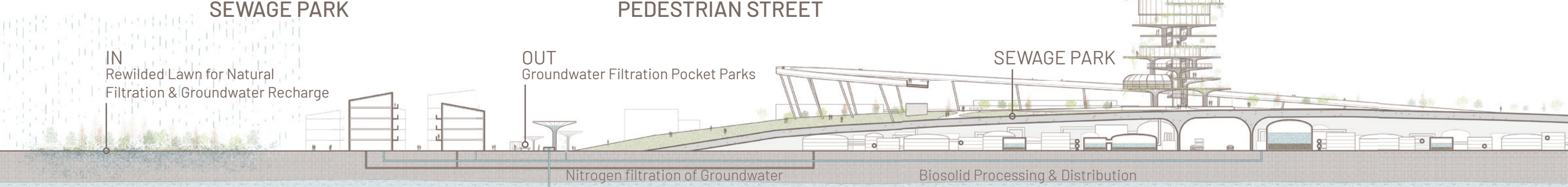
COURTYARD HOUSING



PEDESTRIAN STREET

Our project addresses the pollution already present in the groundwater and ensures long-term recovery of the water cycle. Polluted groundwater is pumped out at designated locations and treated in small underground facilities, primarily in denser and historically industrial areas most affected by decades of contamination. At the same time, clean water is returned to the ground through restored sumps and rewilded, permeable landscapes that absorb rain and runoff. Former creeks, wetlands, and channel junctions are prioritized, including large underused lawn areas at MacArthur Airport, which could be restored as grassland or marshland to filter stormwater back into the aquifer.

The nodes anticipate climate-driven displacement, particularly in low-lying southern areas like Oakdale, where shallow groundwater and chronic flooding already threaten homes. By concentrating growth on safer ground, the new towns support aging residents, welcome new populations, and reshape suburban life around walkability, social connection, and environmental repair.



WATER CIRCULATION

The Blooming Bay

Inhabiting a Changing Coast

SAYVILLE TO FIRE ISLAND, LONG ISLAND

TEAM

/ Deepanksha Gillakamsetty
/ Manuela Hurtado
/ Susana Chinchilla
/ Yi-Jou (Zoe) Lin

Blooming Bay is a radical vision for the future that reimagines the The Great South Bay as a space for adventure, self expression, and collective living.

This project proposes a new way of inhabitation in response to increasing threats of climate change in coastal US cities. By shifting how we value water, land, and ultimately each other, the Bay emerges as a site for alternative human and wildlife settlement.

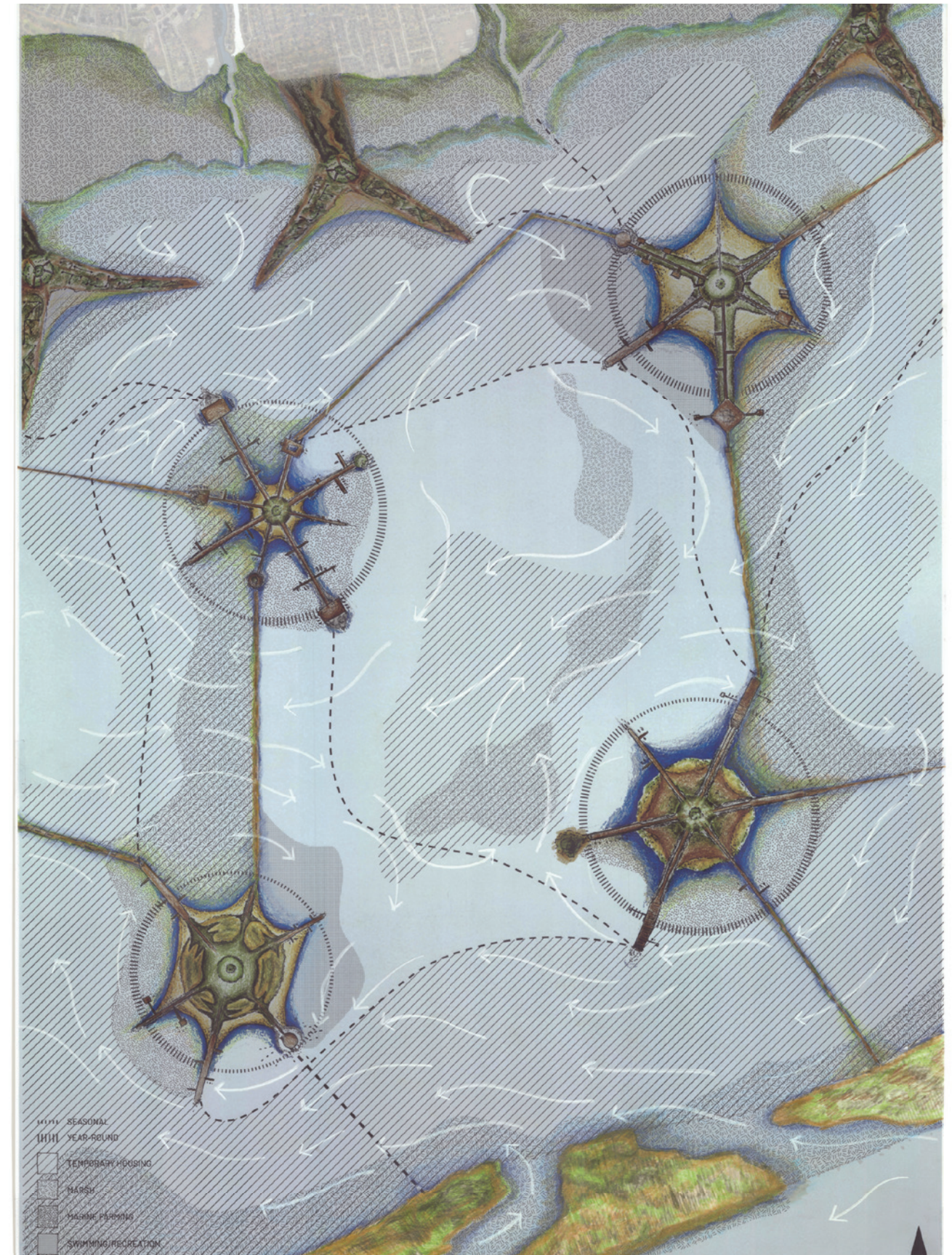
To Bloom is to Grow.

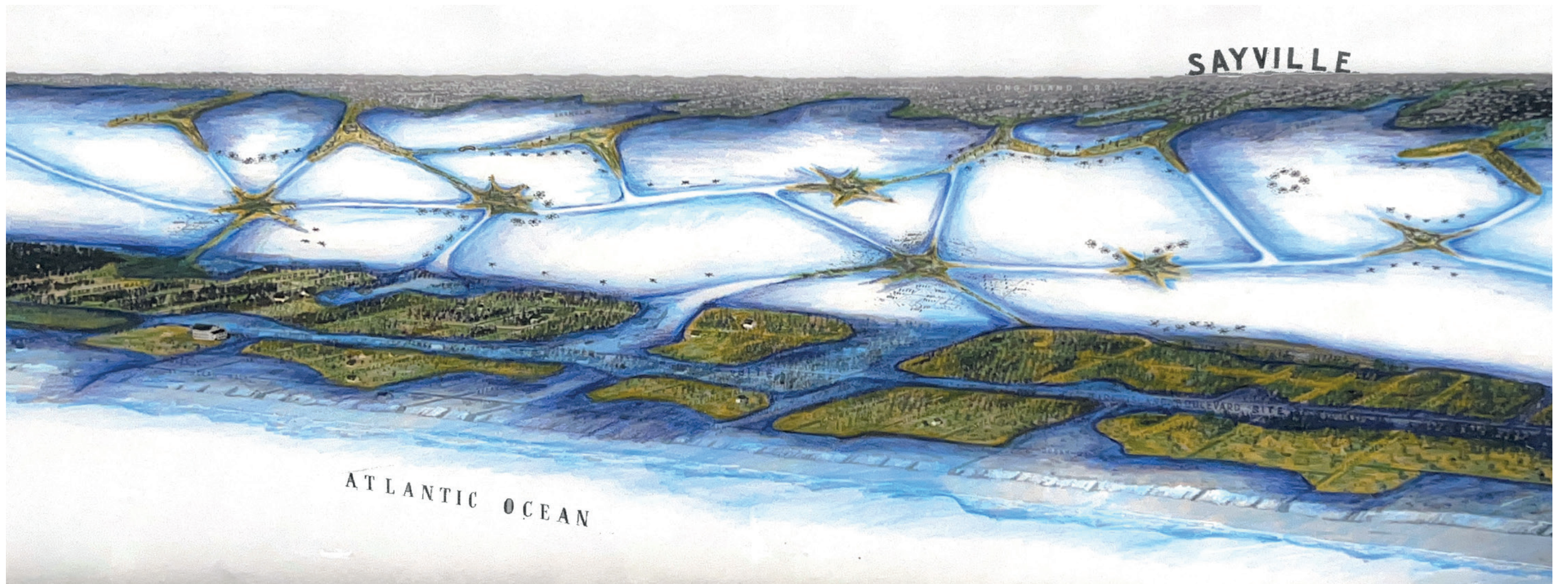
To Grow is to Care.



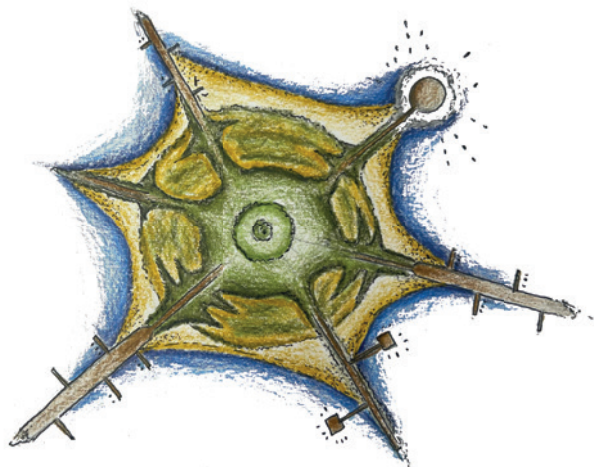
FIRE ISLAND

Video Link

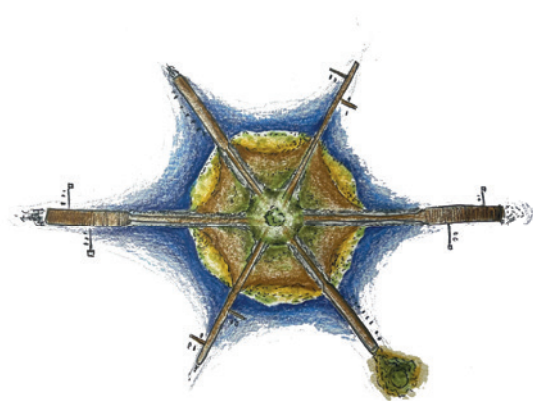




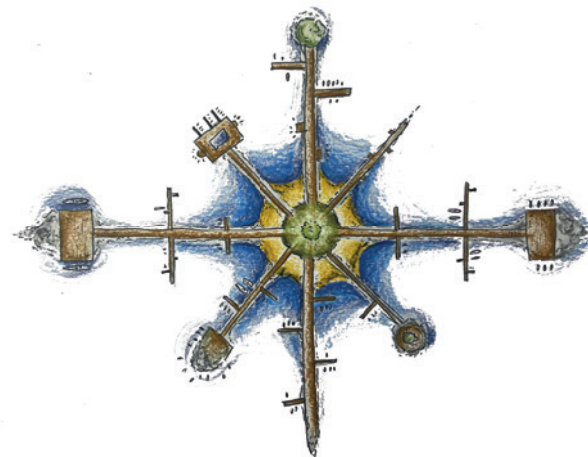
REGIONAL BLOOM



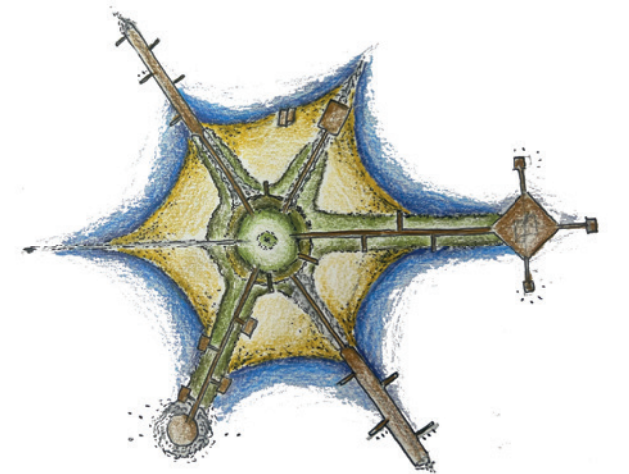
KIKI ISLAND



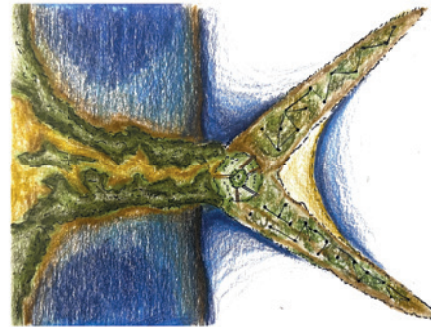
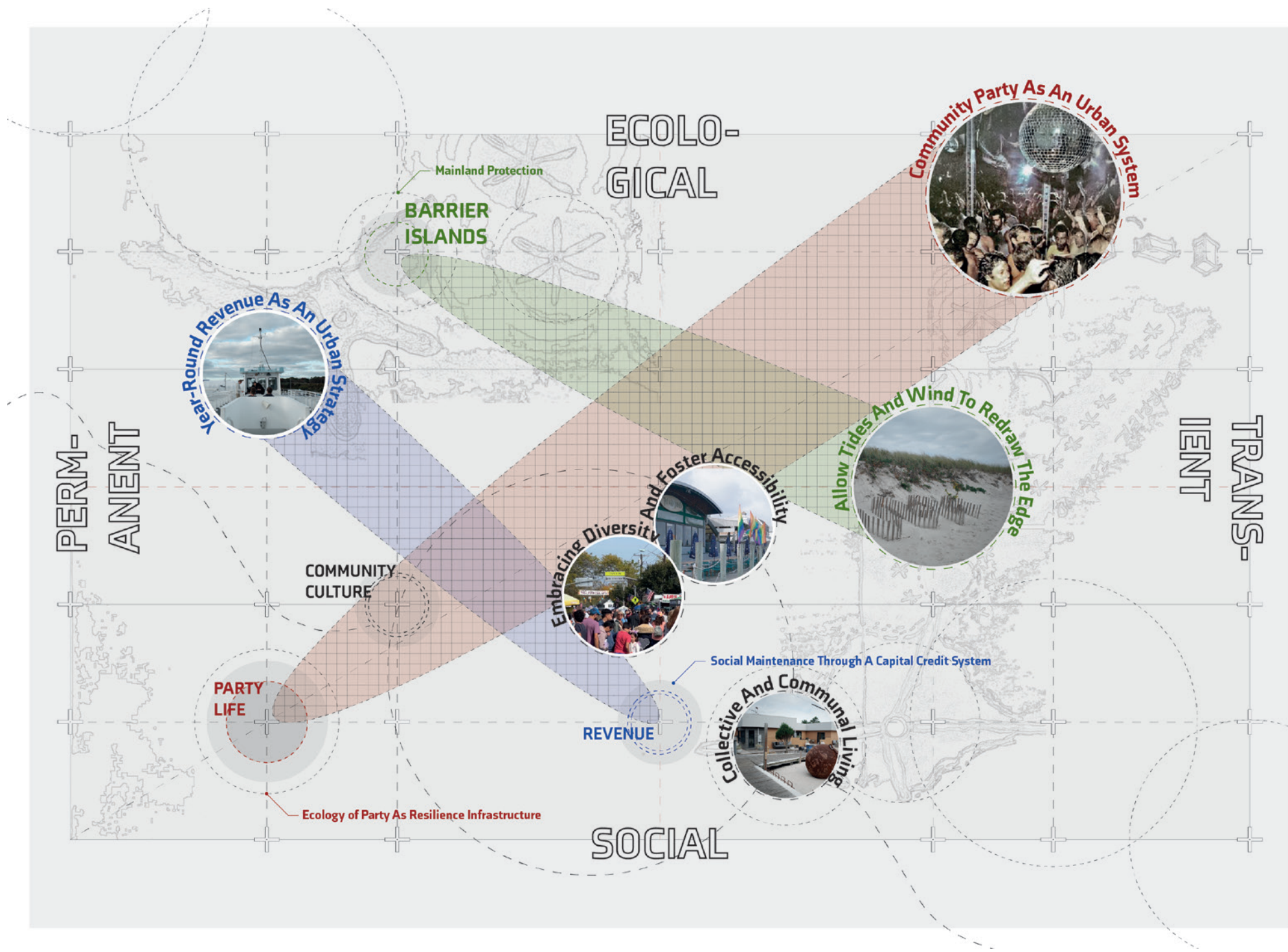
CAMPY CAMP



SOMETHING FISHY



THE TEA



GROVE HOMES

SCALE
0 0.1mi 0.2mi

USE
PERMANENT HOUSING

CAPACITY
200 DETACHED HOMES (PER LEG)

CONSTRUCTION
CONSTRUCTION BY OWNER

OWNERSHIP
LAND OWNED BY BLOOMING BAY NON-PROFIT. HOMES ARE OWNED BY RESIDENTS



PINE HOMES

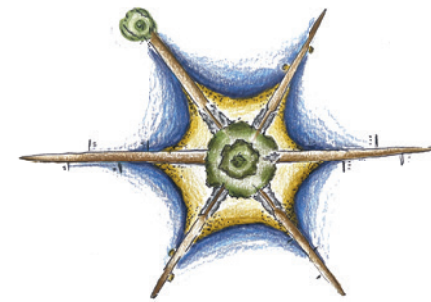
SCALE
0 0.1mi 0.2mi

USE
SEASONAL RENTAL HOUSING

CAPACITY
3000 FLOATING HOMES

CONSTRUCTION
SOCIAL CAPITAL CREDITS

OWNERSHIP
OWNED AND MAINTAINED BY BLOOMING BAY NON-PROFIT



BLOOMED ISLANDS

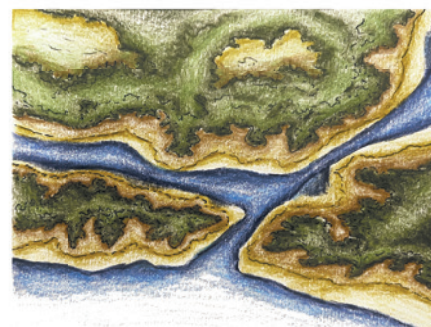
SCALE
0 0.1mi 0.2mi

USE
RECREATION, COMMUNITY FACILITY

CAPACITY
500 PEOPLE

CONSTRUCTION
SOCIAL CAPITAL CREDITS

OWNERSHIP
LAND OWNED BY BLOOMING BAY NON-PROFIT.



FIRE ISLAND MARSH

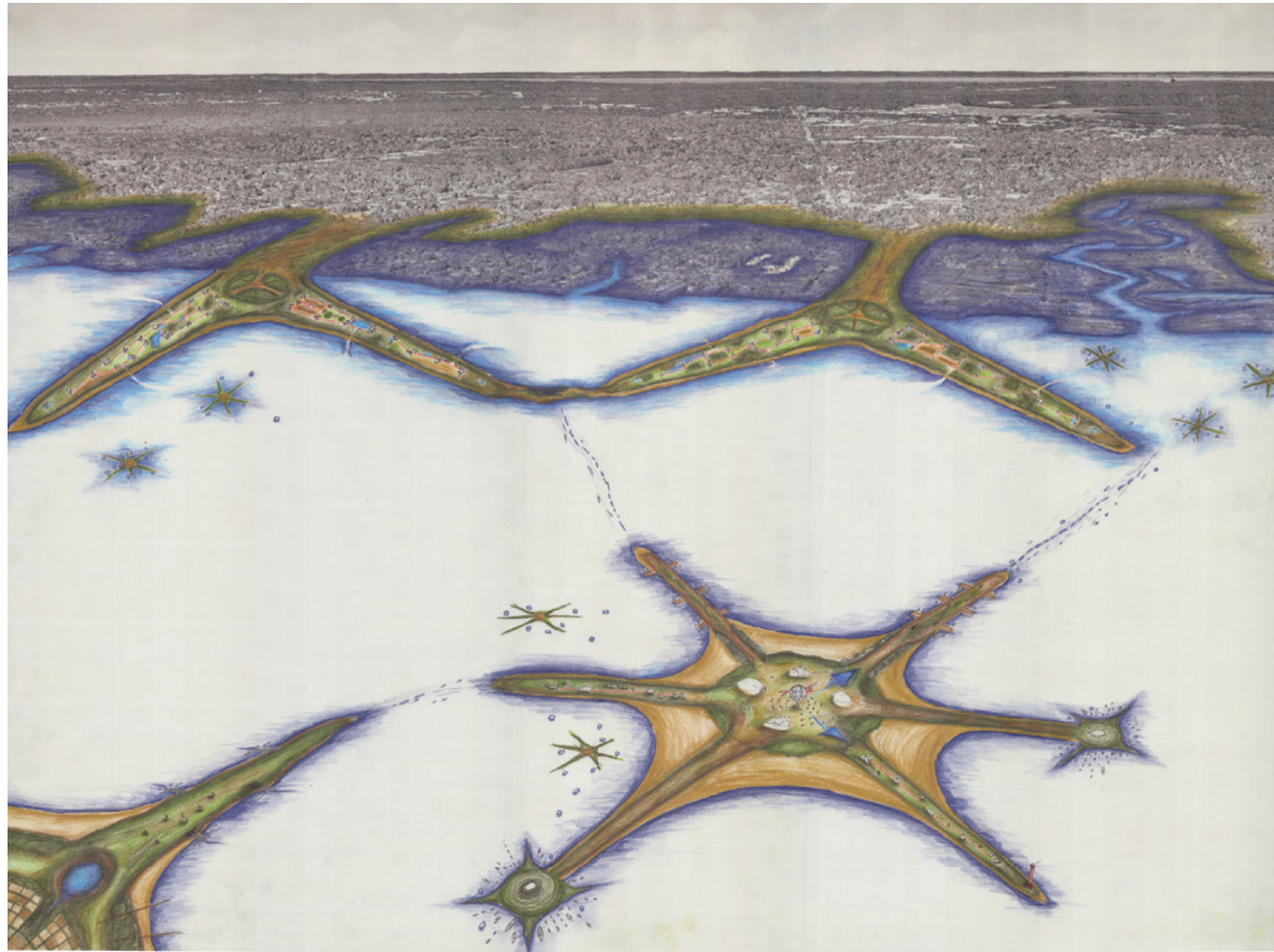
SCALE
0 0.1mi 0.2mi

USE
NATURAL RESERVE/PARK

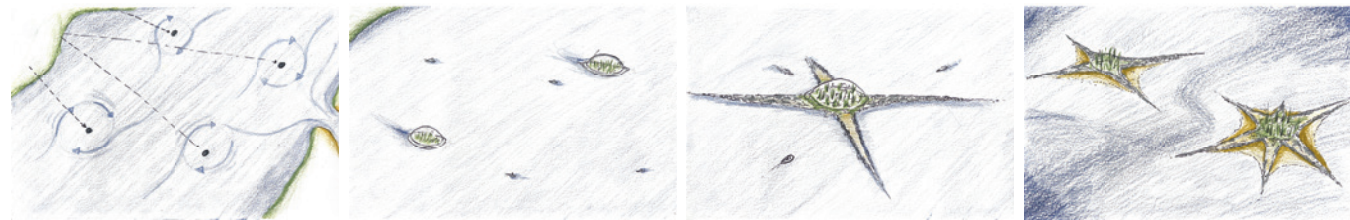
CAPACITY
150 PEOPLE

CONSTRUCTION
NO CONSTRUCTION

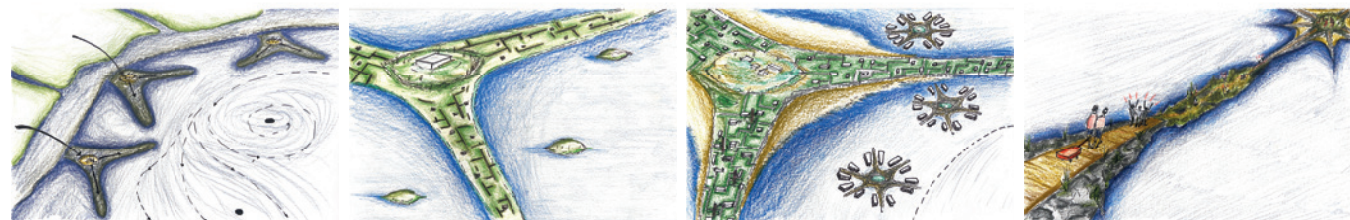
OWNERSHIP
NATIONAL PARKS SERVICE



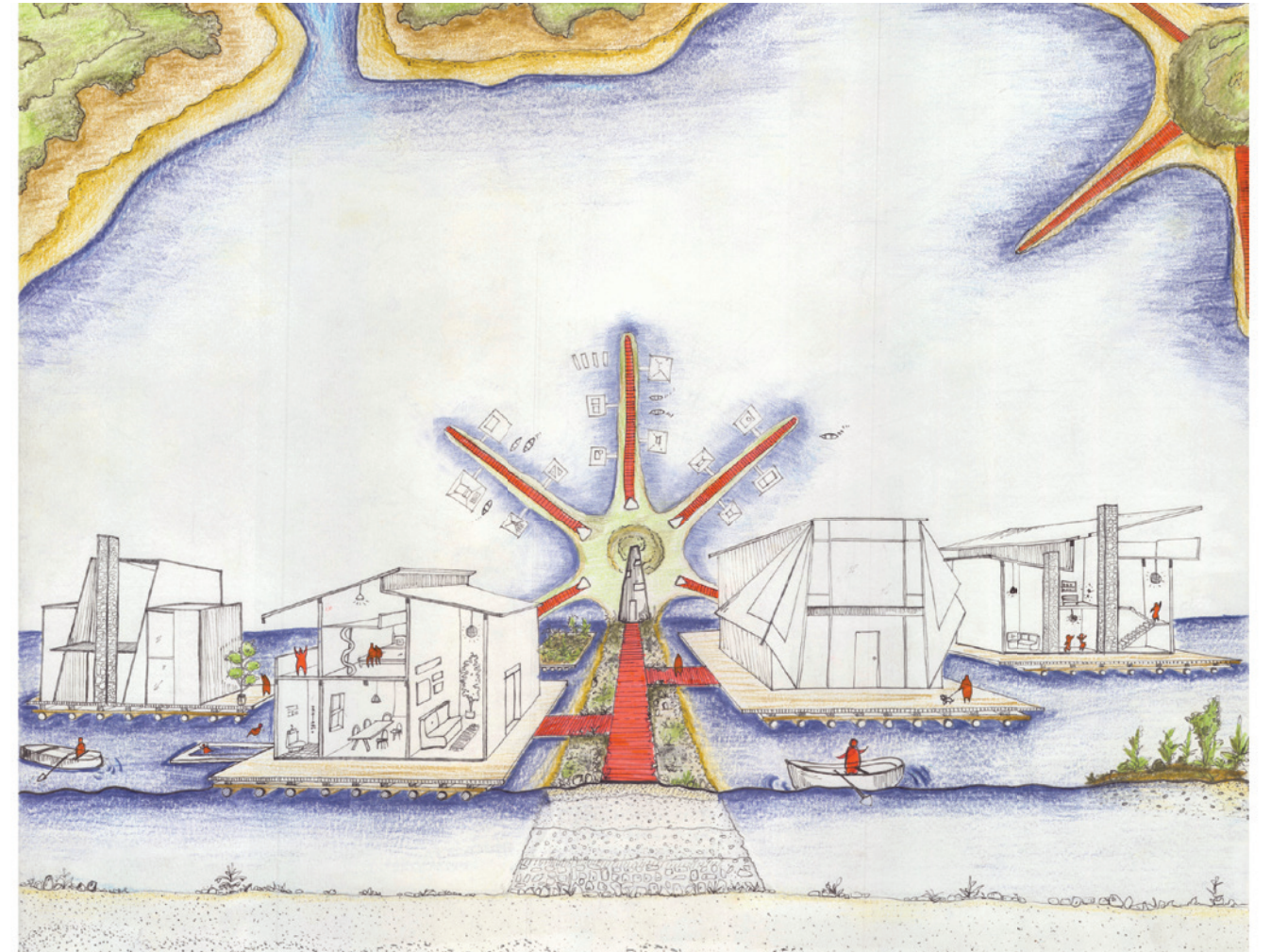
NEIGHBORHOOD BLOOM



ISLAND IMPLEMENTATION



HOUSING IMPLEMENTATION



PORTRAIT OF THE LIVING PINE

Principles:

1/ Let Tides and Wind Redraw the Edge

From erosion to adaptation.

2/ Infrastructure as Collective Care

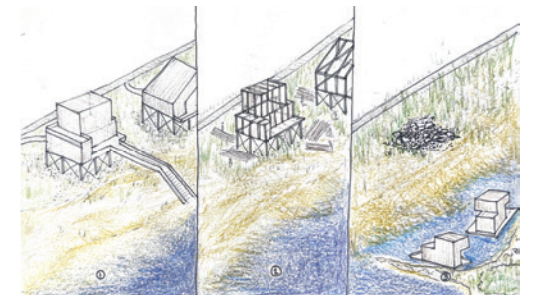
Infrastructure becomes visible, social, and negotiable.

3/ Bloom Through Culture, Not Control

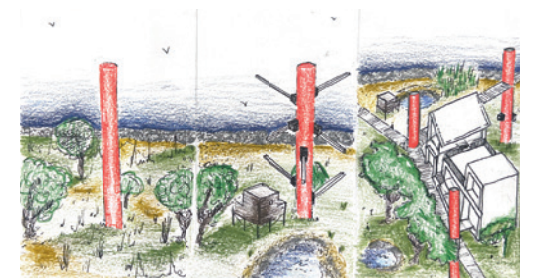
Party, ecology, and care coexist.

4/ Inhabit Seasonally, Not Permanently

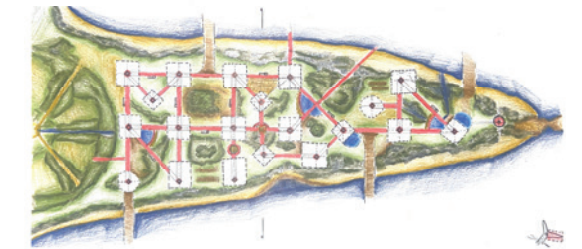
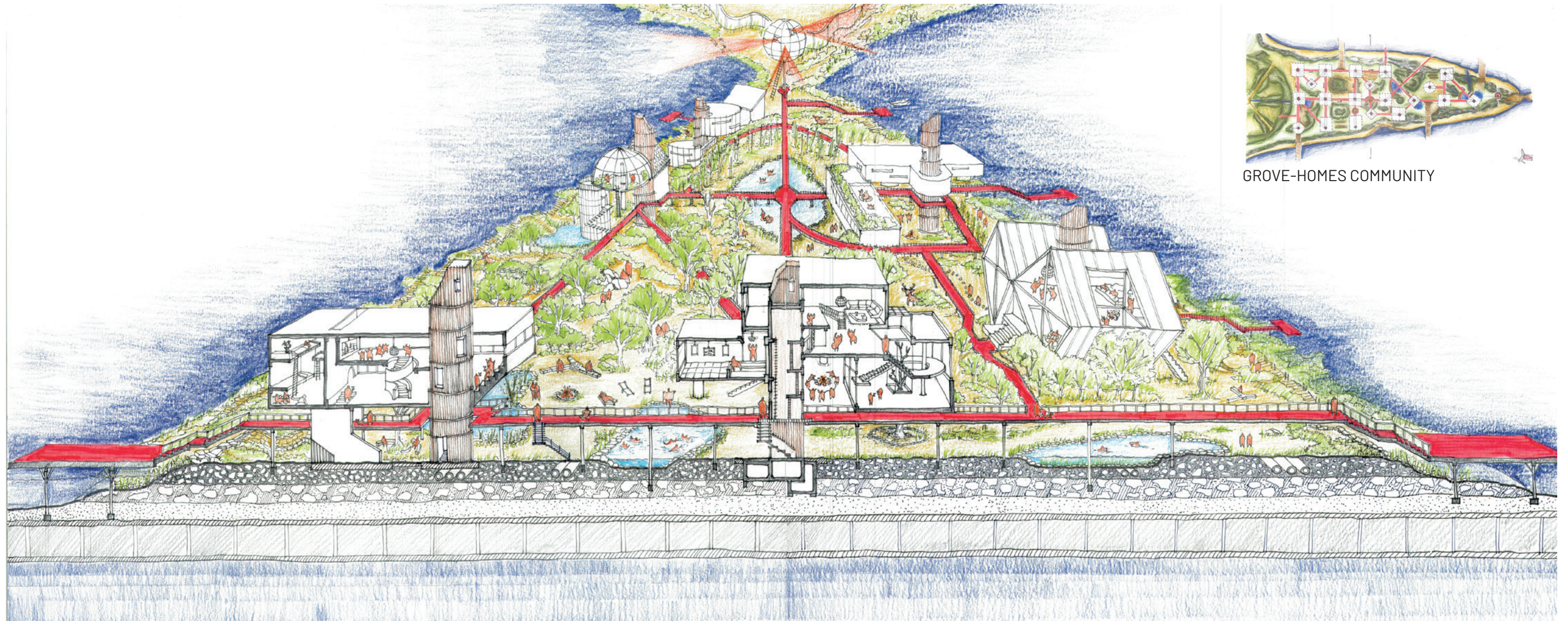
Housing as rhythm, not asset



FIRE ISLAND'S DECONSTRUCTION

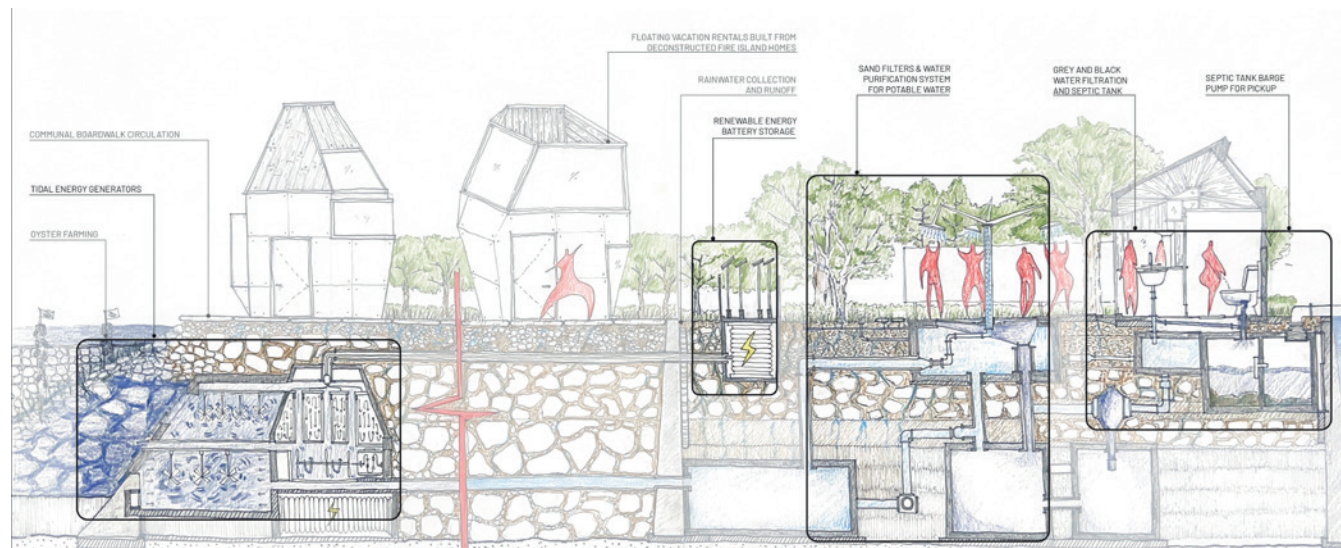


GROVE HOUSE CONSTRUCTION



GROVE-HOMES COMMUNITY

PORTRAIT OF THE PARTY GROVE



The Blooming Bay reframes coastal living not as a battle against water, but as a negotiated coexistence with it. By allowing tides and wind to redraw the edge, embracing seasonal inhabitation, and treating infrastructure as a form of collective care, the project resists permanence as the default response to climate risk. Instead of control, it proposes culture: gathering, celebration, repair, and rest, as an adaptive force. *Blooming Bay* is not a fixed utopia, but a living system that accepts change, withdrawal, and return as part of resilience. In doing so, it imagines a future where

inhabitation is rhythmic, shared, and deeply attuned to environmental uncertainty.

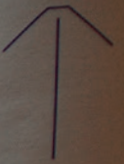
-

***The Blooming Bay* proposes a cultural shift where gathering becomes adaptive, pleasure becomes cyclical, and coastal life is shaped by timing, withdrawal, and shared responsibility rather than permanence or control.**

-

ROOM

FAYERWEA
HALL



Monday	Thursday	Friday
	September 4 Studio and Faculty - Introductions Climate Justice - Thad Team Formation 1st Assignment	September 5 + 7 Public Narrative Workshop with Katie Swenson
September 8 Teams Meet with Assigned Faculty Case Study Desk Crits Personal Region Due	September 11 Individual Stories of Regions Pinup	September 12 Averting Crisis: Housing and Climate Change with Christine Garner, Regional Plan Association; Johanna Lawton, Rebuild by Design
September 15 Case Study Desk Crits	September 18 Case Study Review Transect Kick-off	September 19 Managed Retreat with Despo Thoma, SCAPE; Allison Branco, Nature Conservancy; and Hannah Glosser, HR&A
September 22 Transects Desk Crit (drawing + model) Resilience Strategies - Thad	September 25 Transects Desk Crit (drawing + model) Powermapping Kick-off	September 26 Mandatory Training for GSAPP
September 29 Transects + Powermapping Desk Crit	October 2 Transect & Powermapping Pinup (Assignment Part 1 & 2) Site Visit Kick-off	October 3 Structures of Coastal Resilience, Guy Nordenson and Catherine Seavitt
October 6 Public Life Tools & Methods - Candelaria Site Visit Prep Desk Crit Engagement Plan Scenarios Kick-off	October 9 Site Visit	October 10 Regional Planning with Carolyn Grossman, NYC Department of City Planning
October 13 Scenarios Desk Crit Video Rough Cut	October 16 Scenarios Pinup Thesis / First Grain	October 17 Workshop Preparation
October 20 Video Crit Bria's Talk on Research	October 23 Work Day Mission Statement Kick-off	October 24 + 25 MIDREVIEW AND WORKSHOP

Monday	Thursday	Friday
October 27 Chris on IDM explanation, Workshop Debrief Desk Crit	October 30 Mission Statement : Pin-Up Introduce Sprint Method for Landscape	October 31 Landscape Panel - Sussanah Drake on the Bight
November 3 BREAK Optional On-line desk crits	November 6 Landscape Design Sprint #1 Pinup Frank on Mayoral Transition	November 7 Infrastructure Panel -Jeremy Colangelo and Emily Korman, NJT; Frank Ruchala +Phil Orton on coastal dynamics
November 10 Infrastructure Desk Crit	November 13 Infrastructure: Pinup Housing Design Sprint workshop	November 14 Housing Panel - Julia and Nadine and Noah Chasin
November 17 Housing Desk Crit	November 20 Housing Pinup Implementation/Action Plan Talk	November 21 10 AM SPRING TRAVEL BRIEFING
November 24 Action Plan Desk Crit	November 27 Thanksgiving	
December 1 Final Design Desk Crit	December 4 One MORE Desk Crit!	December 5 On-line Review Rehearsal, send videos to critics.
SATURDAY December 6 FINAL REVIEW	December 8 Sketchbook Review! Final studio meeting Bria's Goodwin Presentation at 6 PM	

BIGHT STUDIO SCHEDULE

ARTIFICIAL INTELLIGENCE POLICY

We are experiencing radical change in the way we work and learn with the widespread use of Large Language Models and other AI technology. This studio cautiously accepts that AI tools are becoming mainstream, but we will enforce these community guidelines:

- **Transparency and Disclosure:** Students must clearly cite and describe the AI tools used for each assignment or project component. This includes specifying the AI model, version, purpose of use, and the extent of its contribution.
- **Beware the Sycophancy Trap.** AI tools reinforce existing biases, especially the “confirmation bias.” ChatGPT always tells us what we want to hear and never challenges our assumptions. Students must use AI in concert with research and critical thought, or else the tools can further spread harmful misinformation, and reportedly, can damage a person’s psyche.
- **Use Sparingly and with Great Skepticism.** AI Tools are developing ahead of society’s ability to develop reasonable rules for their use. The computing power involved requires vast amounts of energy and water, and perhaps more disturbingly, everything it uses is stolen intellectual property. There are on-going lawsuits against AI companies from actual sources of information like the New York Times, but in the meantime, the use of this property is a free-for-all and is becoming another engine of inequality.

STUDIO SKETCH BOOKS

Each student will keep a sketchbook for the studio and will be expected to bring it to all studio meetings, events, and lectures. Sketchbooks will be used in all desk crits. Students will use sketchbooks to draw and take notes during pinups, reviews and lectures.

Special Thanks

**Guest Lecturers,
Workshop Instructors,
Mid-Term Reviewers,
Final Review Guests,
All Community Participants**

Organizer |

Master of Science in Architecture and Urban Design (M.S.AUD),
Columbia GSAPP

Chief Editor |

Yi-Jou (Zoe) Lin

Associate Editors |

Samantha Nowak, Susana Chinchilla, Yung-Hsiang Yang

Editors |

Faculty and Students, M.S.AUD Class of 2026

Photographers |

Vincent Zhang

Faculty and Students, M.S.AUD Class of 2026

